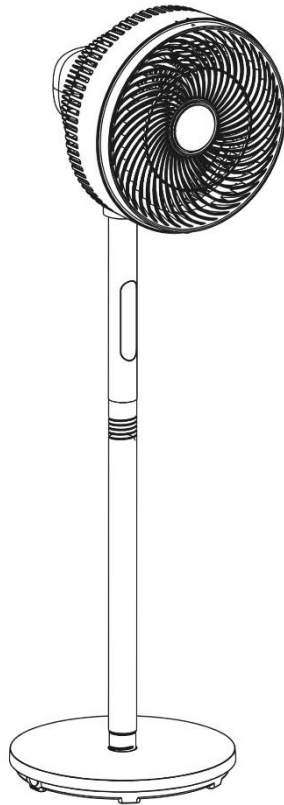


Operating Manual for RHPCF825 (B)



**REGISTER TODAY
FOR YOUR FREE
ADDITIONAL YEAR
GUARANTEE**

GUARANTEE

At Russell Hobbs, we take all our customer feedback seriously. Feel free to contact our Customer Services Team who will be more than happy to assist you.

This product is guaranteed for 12 months from the date of the original purchase. If any defect arises due to faulty materials or workmanship, the faulty product must be returned to the place of purchase.

Refund or replacement is at the discretion of the retailer.

The following conditions apply:

- The product must be returned to the retailer with the original proof of purchase.
- The product must be installed and used in accordance with the instructions contained in this instruction guide and any other instructions for use which are supplied.
- It must be used for domestic purposes only and for its intended use.
- This guarantee does not cover wear and tear, damage, misuse or consumable parts.
- This does not affect your statutory rights.

Region	Contact	Website
UK & Northern Ireland	0345 209 7461	mda.russellhobbs.com
Ireland	1 800 938982	ie.mda.russellhobbs.com
Rest of Europe	² europe@productcaregroup.com	de.mda.russellhobbs.com fr.mda.russellhobbs.com es.mda.russellhobbs.com it.mda.russellhobbs.com nl.mda.russellhobbs.com

Note your serial number below for future reference

Image for illustration purposes only



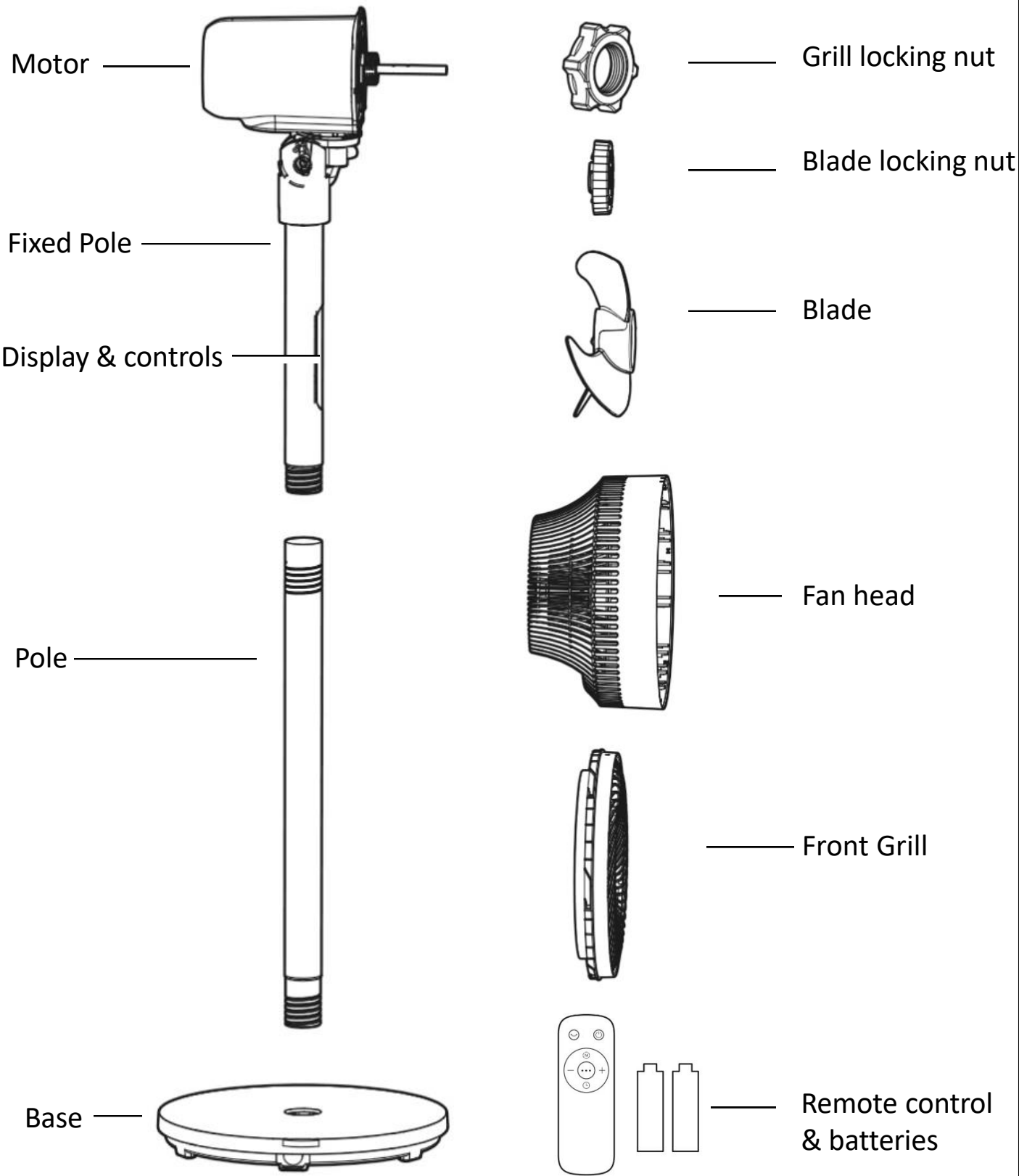
IMPORTANT SAFETY INSTRUCTIONS

- It is hazardous for anyone other than a competent person to carry out any service or repair operation that involves the removal of a cover which gives protection against exposure to electrical parts.
- Do not use with a damaged cord or plug. If the supply cord is damaged, it must be replaced by the manufacturer, its service agent or similarly qualified persons in order to avoid a hazard.
- This product is intended for household use only.
- Do not use outdoors.
- This appliance can be used by children aged from 8 years and above and persons with reduced physical, sensory or mental capabilities or lack of experience and knowledge if they have been given supervision or instruction concerning the use of the appliance in a safe way and understand the hazards involved. Children should not play with the appliance. Cleaning and user maintenance should not be made by children without supervision.
- Do not operate this appliance for anything other than its intended use.
- Do not immerse whole unit in water or other liquids for cleaning.
- Unplug from outlet when not in use. Do not leave unattended while plugged in.
- Do not use if it has been dropped, damaged, left outdoors or submerged in water.
- Keep the appliance away from water; do not allow it to get wet. If the unit is wet, do not plug the unit into the wall socket or turn the unit on.

IMPORTANT SAFETY INSTRUCTIONS

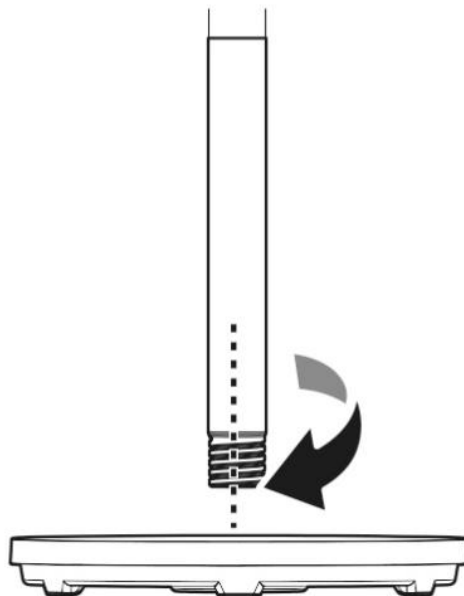
- Do not handle the appliance with wet hands.
- Do not pull or carry by the cord, use the cord as a handle, close doors on the cord, pull the cord around sharp corners or edges, or expose the cord to heated surfaces. Do not unplug by pulling on the cord.
- To protect against electrical shock do not immerse the cord, plug, or appliance in water or other liquids.
- Unplug from the mains outlet when not in use, before putting on and taking off parts, and before cleaning.
- Only use the unit when fully assembled.
- Never place your fingers or other objects into any part of the appliance. Be aware that loose clothing or hair may become trapped in the appliance if improperly used.
- Before use, ensure that all of the air vents of the appliance are clear and there is no restriction of air flow.
- Caution: Appliance may disturb ashes in an open fire. Always avoid directing the appliance toward naked flames.

PARTS

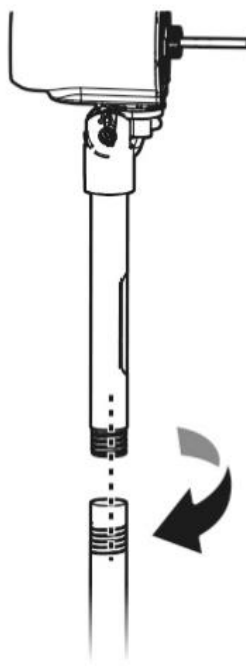


ASSEMBLY

1. Align the pole with the hole in the base and rotate to fix into place.

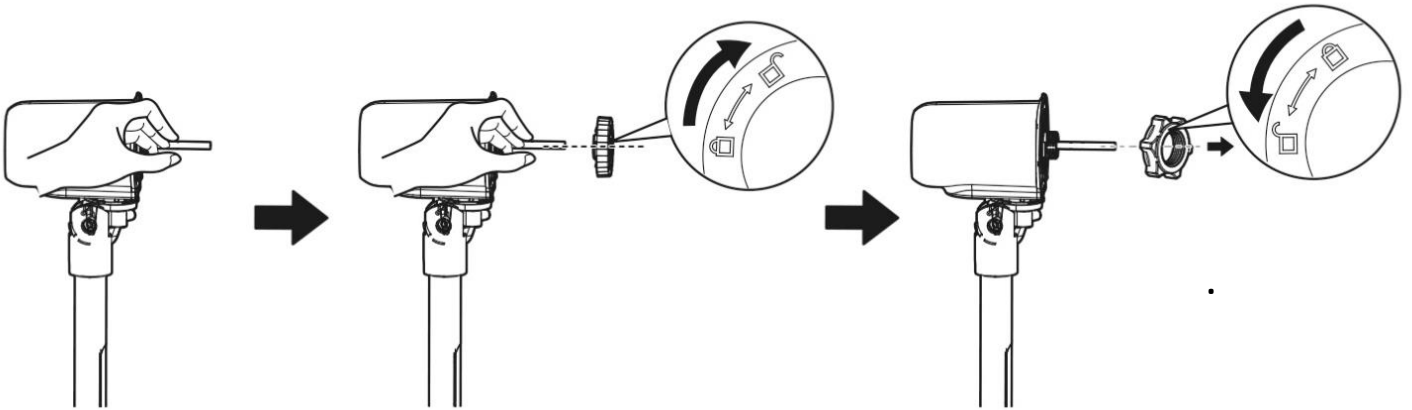


2. Align and rotate the fixed pole next with the fan motor/body.

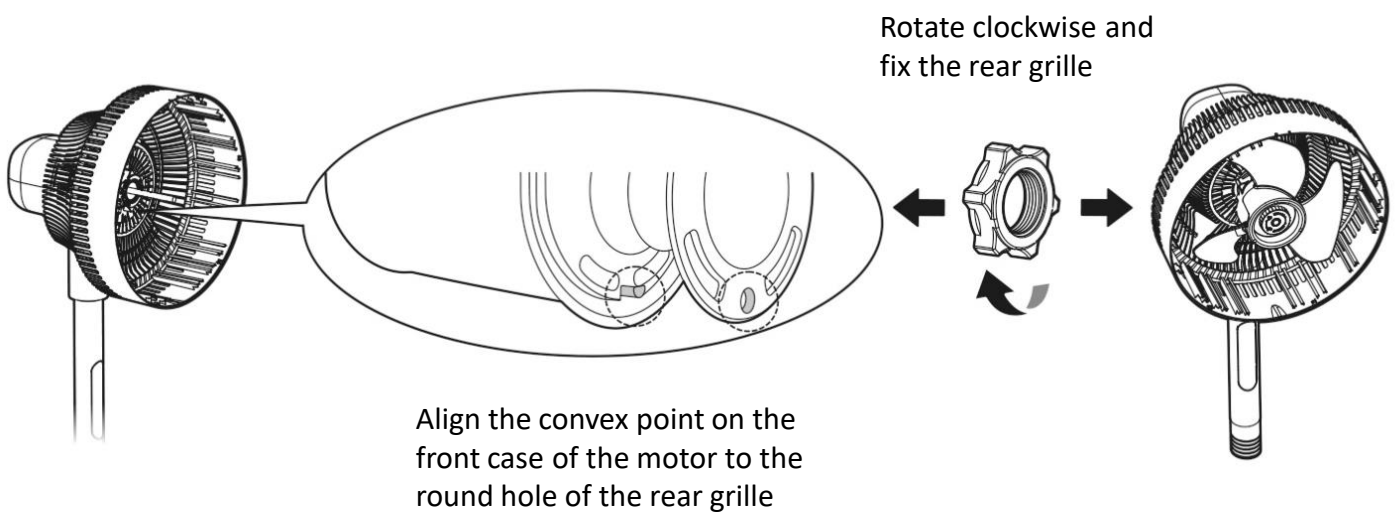


ASSEMBLY

3. Remove the grill locking nut and blade locking nuts from the motor shaft.



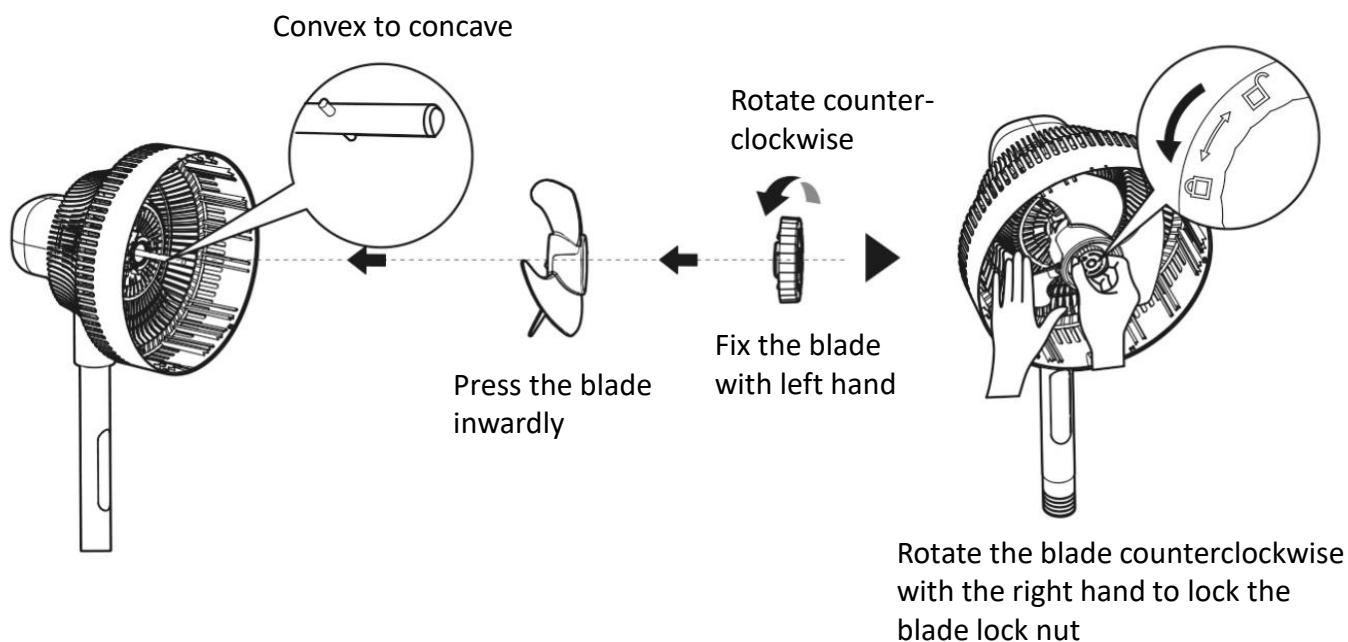
4. Place the Fan head onto the motor front case ensuring that the shaft points are aligned with the grill holes. Use the Grill locking nut to fix the Fan head into place by turning clockwise.





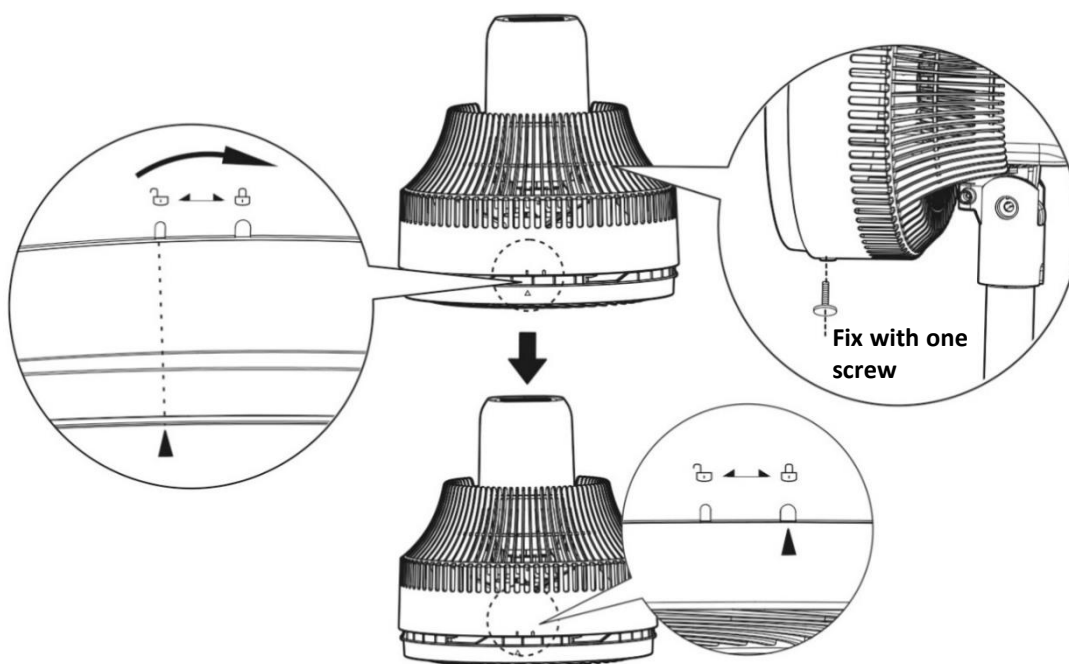
Note: Misalignment will lead to unstable installation and the logo on the front grille will be skewed.

ASSEMBLY

5. Fix the blade on the motor shaft with the blade locking nut.

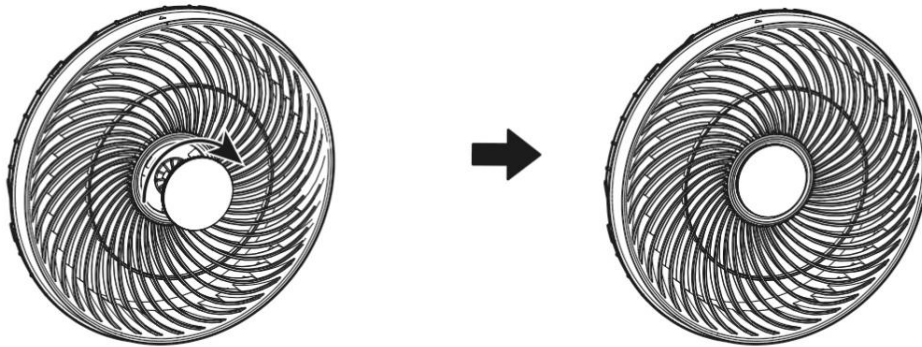


6. Align the direction of the triangle arrow on the front grill with the position  above the Fan head with both hands. Lock it into place by turning the fan head clockwise to position . Fix with 1 screw to install it into place.



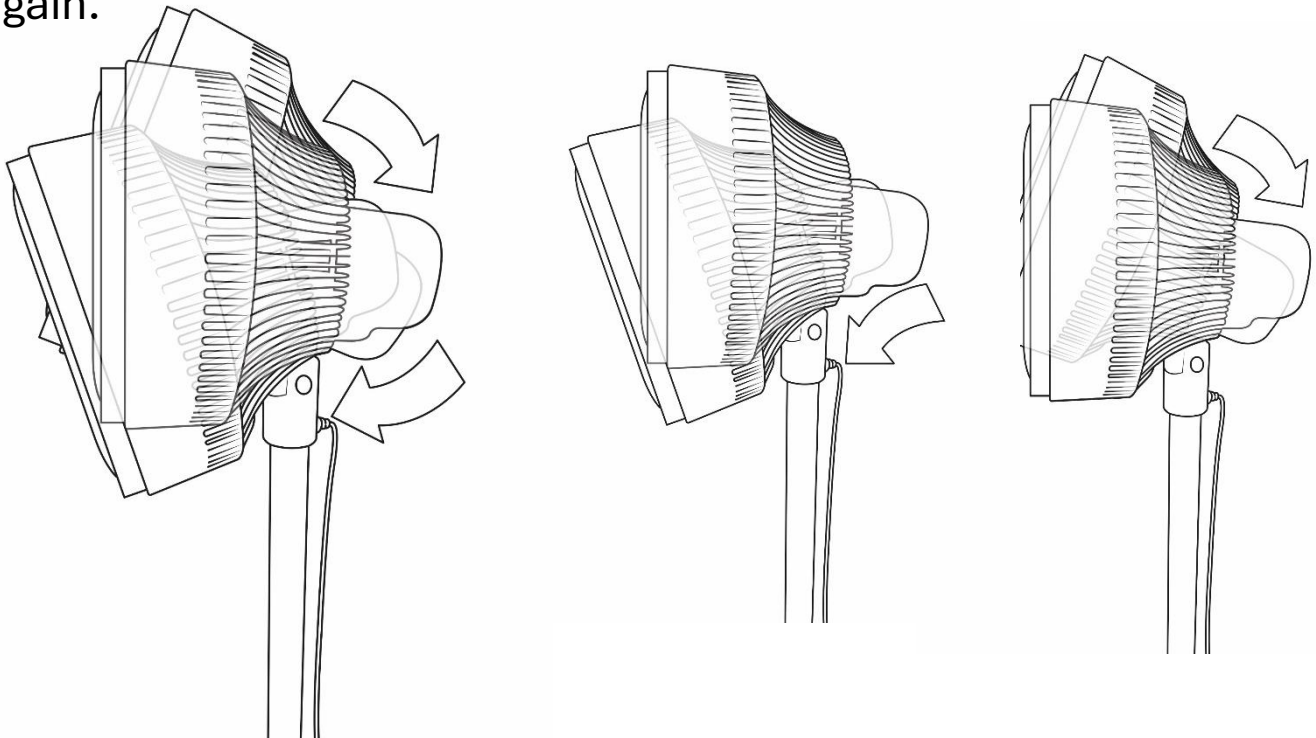
ASSEMBLY

7. Align the decorative ring to the hole in the front grill, then rotate clockwise to fix it. Rotate counterclockwise to loosen the decorative ring.



ADJUSTING THE TILT ANGLE OF YOUR

Manually adjust the **TILT** angle of the Fan Head by moving the Motor up or down. The angle will then be set until manually adjusted again.



USING YOUR FAN



On/Off

Press this key to turn on or put in standby.



Oscillating

When the fan is turned on, press this key to begin oscillation.



Long press 3 s

Wind Speed (wind type)

Press this key to cycle wind speed (1-2-3-4 ... cycle). Press and hold this key to activate circulating wind mode .



Circulating indicator

In wind circulating mode, the indicator will be lit. The oscillator is activated and set at the highest speed. The circulating mode has only one speed level (max).



Timer indicator

The timer can only be set via the remote control, it cannot be set on the product controls.



Digital display

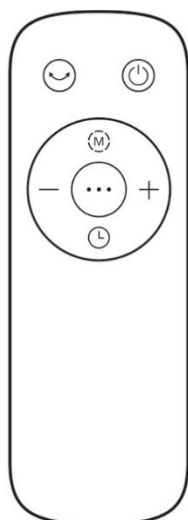
In normal wind mode, the digital display shows 1, 2, 3, 4.

Screen off function

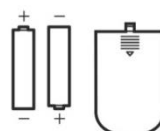
Press and hold the Speed and Oscillator key at the same time, the fan will beep. Then hold the Speed and Oscillator key at the same time again. Or after one minute of inactivity, the screen will automatically turn off.

REMOTE CONTROL

- The remote control can be used normally within 5m in front of the product and within an angle of 30°.
- The battery contains heavy metals, acid and alkali substances, which threaten human health; waste batteries should be sorted and recycled.



2 x AAA Battery. 1.5V



On/Off

Press this key to turn on or put in standby

Oscillating

Turn on or off oscillator



Wind mode

Switch wind mode (normal wind - circulating wind)



Timer

To set the power off timer when the fan is on and to set the power on timer when the fan is in standby mode; press button and use the “+” and “-” buttons to select the length of time (cycle in the sequence of 0-1-2-...-9-0h on the display of the fan). The indicator will then flash, and the timer will begin. The Timer is cancelled if 0h is displayed on the display of the fan.



Plus/Minus

Set wind speed or timer.



No function

Blank key and does not have any function

Note:

- Use manganese or alkaline batteries of type “AAA”. DO NOT use rechargeable batteries.
- Do not mix old and new batteries and DO NOT mix alkaline, standard (carbon-zinc) or rechargeable (ni-cad, ni-mh, etc.) batteries.

BATTERY REPLACEMENT INFORMATION

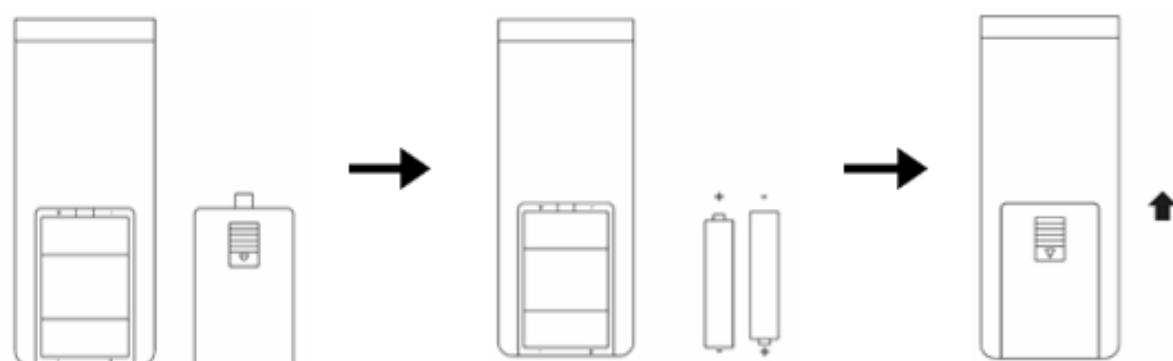
This appliance comes with 2 AAA (1.5V) batteries which are to be fitted into the remote.



CAUTION: Batteries are a chemical burn and choking hazard. Keep batteries away from children.

- Ensure that the battery compartment is always completely secure. If the battery compartment does not close securely, stop using the remote, remove the batteries, and keep it away from children.
- If you think batteries might have been swallowed or placed inside any part of the body, seek immediate medical attention. Dispose of cells properly and keep away from children. Even used cells may cause injury.
- Please dispose of or recycle the remote control batteries according to municipal or provincial laws.

To place the batteries into the remote/replace the batteries please follow the instructions below:



1. Remove the cover from the back of the remote.
2. Insert 2 AAA (1.5V) batteries as shown above.
3. Replace the cover onto the back of the remote.

CLEANING & MAINTENANCE

The fan requires minimal maintenance. Do not try to fix it by yourself. Refer it to qualified service personnel if service is needed.

1. Before cleaning and assembling, unplug the fan power.
2. To ensure adequate air circulation to the motor, keep vents at the rear of the motor free of dust. Do not disassemble the fan to remove dust.
3. Please wipe the exterior parts with a soft cloth soaked in mild detergent.
4. Do not use any abrasive detergent or solvents to avoid scratching the surface.
5. Do not use any of the following as a cleaner: gasoline, thinner.
6. Do not allow water or any other liquid to enter into the motor housing or interior parts.
7. Be sure to unplug from the electrical supply source before cleaning.
8. Plastic parts should be cleaned with a soft cloth moisten with mild soap. Thoroughly remove soapsuds with a dry cloth afterwards.

IMPORTANT!

KEEP BLADES CLEAN

Wash the blades with cold water at least once every 3 months.

The blades may require more frequent washing if in dusty environments.

3 MONTHS

PROBLEM SOLVING

The fan doesn't switch on	<ul style="list-style-type: none">• Check the fan is plugged in• Check the socket is switched on• Check another appliance in the socket• Unplug and check for any obvious signs of damage to the cord or plug• If recently used, allow to cool for 1 hour then try again
The fan is rattling	<ul style="list-style-type: none">• Check the grill is secured properly• Check all screws are securely fastened• Check there is nothing in contact with the fan
Fan will not oscillate	<ul style="list-style-type: none">• Check that nothing is interfering with the fan preventing oscillation
Fan is making a grinding sound	<ul style="list-style-type: none">• Immediately switch off and contact Customer Services
The air is dusty	<ul style="list-style-type: none">• Ensure fan is unplugged• Carefully remove grill• Carefully remove blades from fan• Using mild soapy water and a sponge, gently rinse the blades• Allow to dry naturally for 24 hours then refit the blades
The remote does not work	<ul style="list-style-type: none">• The battery needs replacing• The remote is being used more than 5m away from the machine. Use the remote closer to the machine and make sure it is pointing directly at the display panel.

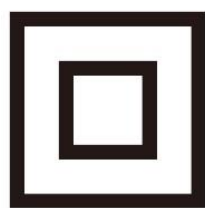
NOTES



Russell Hobbs

Made by Product Care Trading Limited under license from Spectrum Brands (UK) Limited. Product Care Trading Ltd, Unit 1, Green Bank Business Park, Swan Lane, Hindley Green, Wigan, WN2 4AY, United Kingdom / Product Care (Ireland) Ltd, Unit 3D North Point House, North Point Business Park, New Mallow Road, Cork, T23 AT2P, Ireland. Russell Hobbs is the registered trademark of Spectrum Brands (UK) Ltd.

UK
CA



The 'wheellie bin' symbol is known as the 'Crossed-out wheellie bin Symbol'. When this symbol is marked on a product/batteries, it means that the product/batteries should not be disposed of with your general household waste. Only discard electrical/electronic/battery items in separate collection schemes, which cater for the recovery and recycling of materials contained within. Your co-operation is vital to ensure the success of these schemes and for the protection of the environment. For your nearest disposal facility, visit www.recycle-more.co.uk or ask in store for details.

SEDEX – Connecting businesses and their global suppliers to share ethical data and enabling improvement in ethical performance. Visit www.sedex.org.uk for further information.

We reserve the right, due to possible changes to design, to alter the instruction manual without prior notice.