



*Please refer to the warranty section for terms of your extended guarantee



HURRICANE CAT 2 AQUASTEAM SPOT & UPHOLSTERY WASHER

Contents

Page No.

2	Contents
3	Reading and Storing the User Manual
3	Important Safety Instructions for Proper Use
6	Explanation of Symbols
7	Description of Parts & Accessories
8	Description of Parts - Multitool
8	Before First use of Your Spot & Upholstery Washer
8	About Your Spot & Upholstery Washer
8	Assembling Your Spot & Upholstery Washer
9	Filling the Clean Water Tank
9	Preparing the Carpet/Upholstery for Cleaning
10	Using Your Spot & Upholstery Washer
10	<i>Cleaning with Cold Water</i>
11	<i>Cleaning with Hot Water</i>
12	<i>Cleaning with Steam</i>
13	Hints & Tips for Using Your Spot and Upholstery Washer
14	Emptying the Dirty Water Tank
14	Cleaning and Maintenance of Your Spot & Upholstery Washer
15	<i>Cleaning the Dirty Water Tank Filter</i>
15	<i>Cleaning the Clean Water Filter</i>
15	<i>Cleaning the Nozzle</i>
16	<i>Automatically Cleaning the Flexible Hose</i>
16	Storing Your Spot & Upholstery Washer
16	Plug Wiring Information
17	Technical Specification
17	Recycling Information
18	Troubleshooting Guide
19	Customer Support
Back Page	Warranty Information

READING AND STORING THE USER MANUAL



Before using this product, please read through this manual carefully paying particular attention to the safety instructions. Failure to do so may result in personal injury or damage to the product.

Carefully save this instruction manual for future reference. Ensure the user manual is included when passing the product on to any third parties.

IMPORTANT SAFETY INSTRUCTIONS FOR PROPER USE

When using electrical appliances, basic safety precautions should always be followed.

Only use the product as described in this user manual. Any other use is considered improper and may result in damage to property or persons. The manufacturer or vendor cannot be held liable for damages or injury incurred through improper or incorrect use.

- **Read and familiarise yourself with all operating instructions before using this Spot Washer.**
- Before plugging your unit into the mains, visually check that the unit is intact and has not suffered any transit damage.
- Check that the voltage indicated on the data plate corresponds with that of the local network before connecting the appliance to the mains power supply.
- This appliance can be used by persons with reduced physical, sensory or mental capabilities or lack of experience and knowledge if they have been given supervision or instruction concerning use of the appliance in a safe way and understand the hazards involved.
- Children shall not play with the appliance.
- Keep the appliance and its cord out of reach of children less than 8 years when it is energised or cooling down.
- **DO NOT** immerse the appliance or its cord in water or any other liquids.
- **DO NOT** leave the appliance unattended during use.
- **DO NOT** leave the appliance unattended whilst connected to the mains supply.
- **DO NOT** use this appliance outdoors.

- It is imperative to unplug the power cord after the appliance has been used, before it is cleaned and whilst being repaired.
 - Repairs to electrical appliances should only be performed by qualified personnel. Improper repairs may place user at serious risk.
 - **DO NOT** operate this appliance with a damaged plug or cord, after a malfunction or after being dropped or damaged in any way.
 - Regular, periodic checks should be carried out on the mains cable to ensure no damage is evident. Should there be any signs of damage the appliance should not be used.
 - If the power cable is damaged, it should only be replaced by qualified personnel in order to avoid a hazard.
 - **DO NOT** allow the mains cable to hang over sharp edges or come in contact with hot surfaces.
 - **DO NOT** run the mains cable under carpets, rugs, etc.
 - The appliance is not to be used if it has been dropped, if there are visible signs of damage or it is leaking.
 - The plug must be removed from the socket outlet before the reservoir is filled with water or the waste water tank emptied.
 - The filling aperture must not be opened during use.
 - Allow the unit to cool before storage.
 - Before cleaning, disconnect the appliance from the mains supply and allow to cool.
 - This appliance is intended for household use only and should not be used for industrial purposes.
 - **DO NOT** use any accessories or attachments with this appliance other than those supplied or recommended by supplier.
 - **DO NOT** use this appliance for anything other than its intended use.
 - **DO NOT** push objects into any openings as damage to the appliance and/or electric shock may occur.
 - Unplug after each use. Grasp the plug, not the cord.
-

- **DO NOT** pull or carry the appliance by the electrical cord.
- **Caution:** Always wear suitable shoes when using the Spot Washer and when changing accessories, do not wear slippers or open toed footwear.
- Ensure fingers and other objects are never placed in any part of the Spot Washer. Clothing or hair may become trapped if the Spot Washer is used improperly.
- Keep hair, loose clothing, jewellery, fingers and all parts of the body away from openings and moving parts.
- Keep all air vents clear and free of dust, lint, hair and anything else that may reduce airflow.
- Avoid directing the appliance towards naked flames as the air discharged may extinguish gas fires or pilot lights and may disturb fires in open fires.
- Never operate the appliance without water.
- Never fill the water tanks past the maximum level mark.
- **DO NOT** run the Spot Washer over hot ashes or lit cigarettes, etc.
- Do not use the Spot Washer without the water tanks fitted.
- **DO NOT** run the Spot Washer over any large or broken objects such as glass.
- **DO NOT** run the Spot Washer over anything that is burning or smoking such as cigarettes, matches or hot ashes.

Explanation of Symbols

The following warning symbols or words are used in this instruction manual:



Products labelled with UK Conformity Assessment identifies products conforming to UK statutory requirements.



Products labelled with this symbol conform to applicable provisions of the European Economic Area.



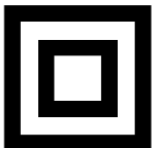
You should now recycle your waste electrical goods and in doing so help the environment. This symbol means waste electrical products at the end of their useful life should not be disposed of with normal household waste and not sent to landfill. Please ensure it is taken to a suitable facility for disposal. Check with your Local Authority or retailer for recycling advice or visit www.recycle-more.co.uk, or www.weeeireland.ie, enter your postcode to find out your nearest recycling site.



This symbol provides useful additional information on the use of this product.



This symbol indicates that the supply uses an alternating current mains supply.



This symbol indicates that the appliance is electrically double insulated and therefore does not require an earth connection.



This designates a hazard with moderate risk, which may result in severe injury or damage to the product if not adhered to.

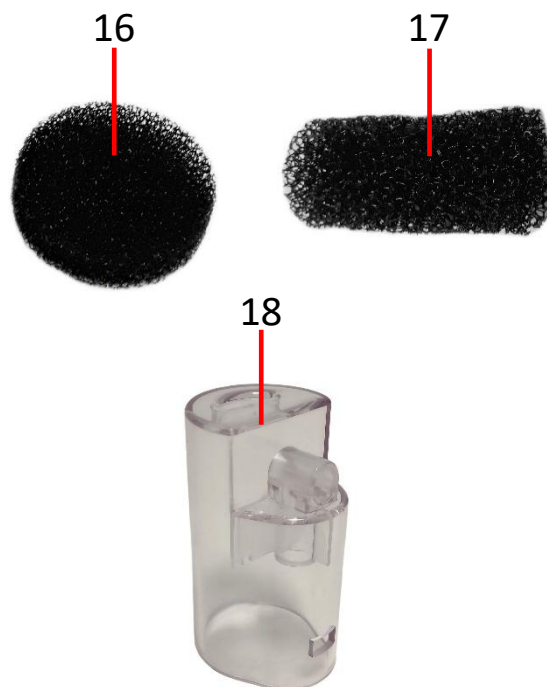
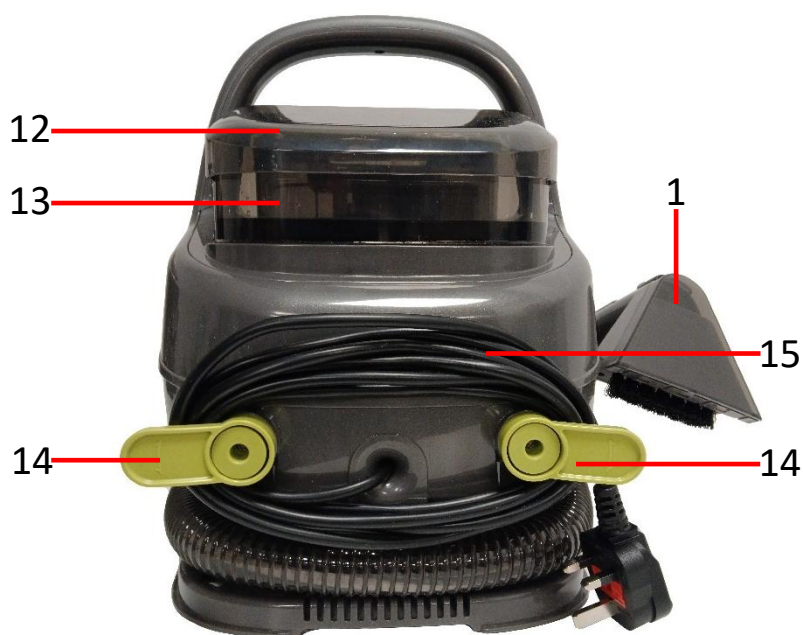
Description of Parts & Accessories

Front View



1. Nozzle
2. Multitool.
3. Multitool Controls.
4. Multitool Holder.
5. Vacuum Indicator.
6. Flexible Hose.
7. Power Button
8. Base Unit Spray Indicator
9. Dirty Water Tank.
10. Dirty Water Tank Lid.
11. Carrying Handle.
12. Clean Water Tank Lid.
13. Clean Water Tank.
14. Adjustable Cable Tidies.
15. Mains Cable
16. Clean Water Filter.
17. Dirty Water Filter.
18. Hose Cleaning Attachment

Rear View



Description of Parts – Multitool (2)



- 19. Nozzle Release Catch.
- 20. Vacuum On/Off Button.
- 21. Mode/Ready Indicator.
- 22. Mode Select Button.
- 23. Spray Indicator.
- 24. Spray On/Off Button

Before First Use of Your Spot & Upholstery Washer

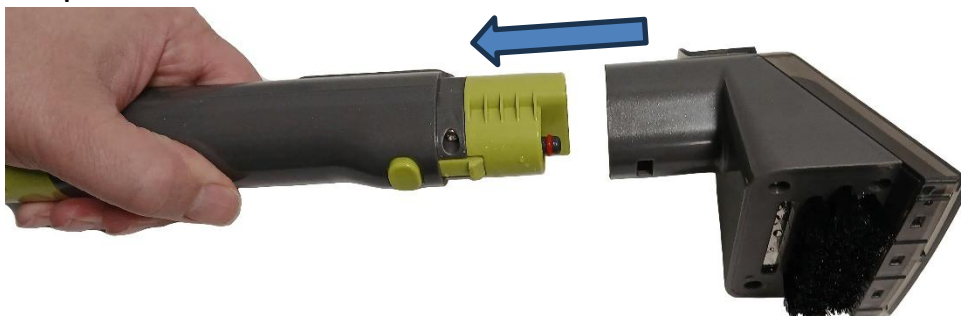
- Remove all packing materials and discard responsibly.
- Take care whilst opening the carton as a sharp blade may damage the product.
- Ensure that all parts are present – see '**Description of Parts & Accessories**' above:

About Your Spot & Upholstery Washer

- This Spot Washer is designed to clean small areas of household fabric surfaces, such as patches of carpets and upholstery, it is not suitable for use as a conventional vacuum cleaner.
- Do not use the Spot Washer on other materials.
- Only use the spot cleaner with tap water or purified/distilled water.
- Ensure the water does not enter electrical parts.

Assembling Your Spot & Upholstery Washer

Before use, push the **Nozzle** (1) onto the end of the **Multitool** (2) until the **Nozzle** (1) clicks into place.



Filling the Clean Water Tank (13)

1. Grasp the lid and lift the **Clean Water Tank (13)** straight up out of the Spot Washer.

2

2. Turn the tank upside down and unscrew the filling cap (circled right) from the bottom of the tank.

**3**

3. Fill the tank with a warm water (max. 40°C) and cleaning solution mix as shown left. Ensure that the level is not above the 'MAX' mark (arrowed) on the side of the tank:

i In hard water areas it is strongly recommended that distilled/purified water is used to avoid calcium build up which may damage the Spot Washer.

4. Screw the filling cap back on, turn the tank the correct way up and replace the **Clean Water Tank (13)** into the spot washer.

i **DO NOT** overfill the tank as this will cause a spillage/leakage.
DO NOT operate the Spot Washer with an empty clean water tank.

Preparing the Carpet/Upholstery for Cleaning

⚠ WARNING! **DO NOT** use this Spot Washer as a dry vacuum cleaner as this will damage the appliance.

Before cleaning, dampen a white cloth and rub the cloth gently over a small test area on the carpet or upholstery to be cleaned and check for any colour bleeding. If the cloth remains clean, it should be safe to continue.

Using Your Spot & Upholstery Washer

1. Ensure the **Dirty Water Tank** (9) is in place. Remove the **Mains Cable** (15) from the back of the Spot Washer by rotating the **Adjustable Cable Tidies** (14) inwards as shown right and then remove the **Mains Cable** (15).

NOTE rotate the **Adjustable Cable Tidies** back (14) outwards so that the mains cable can be wound back onto the Spot Washer after use.

2. Fully unravel the **Mains Cable** (15) and insert the mains plug into the nearest mains socket and switch the socket on (if applicable).

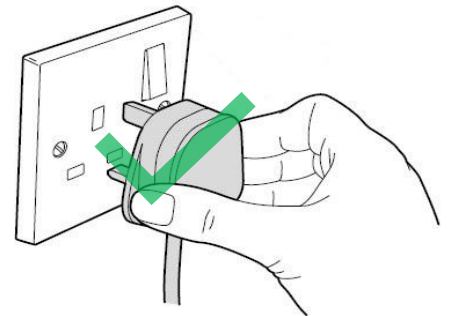
1



3



2

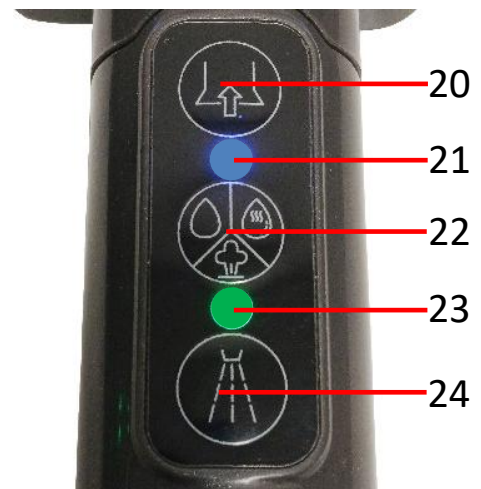


3. Press the **Power Button** (7 – arrowed left) to power up the Spot Washer. The button will light green to show the unit is powered up.

Cleaning with Cold Water

1. Press the **Mode Select Button** (22) until the **Mode/Ready Indicator** (21) illuminates Blue.
2. Hold the **Multitool** (2) over the area to be cleaned.
3. Press the **Spray On/Off Button** (24) to activate the water spray. The **Spray Indicator** (23) will illuminate green and the pump will be heard running.

NOTE Whilst the pump is running the **Base Unit Spray Indicator** (8) will also illuminate.



6

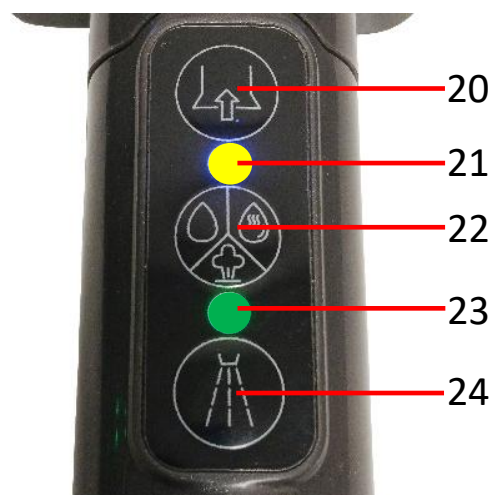

4. Once the area is sufficiently saturated, press the **Spray On/Off Button** (24) to switch the internal pump off and stop spraying. **Indicators** (23) and (8) will go out.
5. Press the **Vacuum On/Off Button** (20) to activate the vacuum. The **Vacuum indicator** (5) on the main unit will illuminate.
6. Place the **Nozzle** (1) evenly and firmly against the carpet or upholstery. Pull the handle slowly towards you, keeping it pressed against the material to vacuum the dirty water which will be collected in the **Dirty Water Tank** (9).

7. Repeat the above steps if necessary if the spot requires further cleaning.

Cleaning with Hot Water

1. Press the **Mode Select Button** (22) until the **Mode/Ready Indicator** (21) starts to flash yellow. Flashing yellow indicates that the water is warming up.
2. Once the **Mode/Ready Indicator** (21) stops flashing and is continually yellow, the unit is ready to clean with hot water.
3. Hold the **Multitool** (2) over the area to be cleaned.
4. Press the **Spray On/Off Button** (24) to activate the water spray. The **Spray Indicator** (23) will illuminate green and the pump will be heard running.

NOTE Whilst the pump is running the **Base Unit Spray Indicator** (8) will also illuminate.



NB Whilst generating hot water, a little condensation will be expelled from the **Nozzle** (1), hold the **Multitool** (2) in free air until the hot water is emitted.

WARNING! Be careful whilst using this Spot Washer due to a scalding hazard.

6



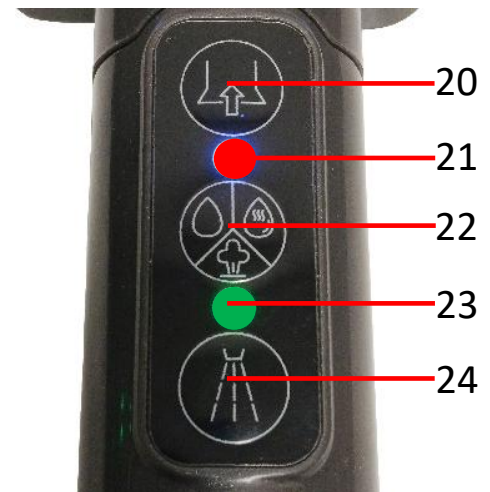
5. Once the area is sufficiently saturated, press the **Spray On/Off Button** (24) to switch the internal pump off and stop spraying. **Indicators** (23) and (8) will go out.
6. Press the **Vacuum On/Off Button** (20) to activate the vacuum. The **Vacuum indicator** (5) on the main unit will illuminate.
7. Place the **Nozzle** (1) evenly and firmly against the carpet or upholstery. Pull the handle slowly towards you, keeping it pressed against the material to vacuum the dirty water which will be collected in the **Dirty Water Tank** (9).

8. Repeat the above steps if necessary if the spot requires further cleaning.

Cleaning with Steam

1. Press the **Mode Select Button** (22) until the **Mode/Ready Indicator** (21) starts to flash red. Flashing red indicates that the unit is warming up and preparing to produce steam.
2. Once the **Mode/Ready Indicator** (21) lights continually red, the unit is ready to clean with steam.
3. Hold the **Multitool** (2) over the area to be cleaned.
4. Press the **Spray On/Off Button** (24) to activate the steam spray. The **Spray Indicator** (23) will illuminate green and the pump will be heard running.

NOTE Whilst the pump is running the **Base Unit Spray Indicator** (8) will also illuminate.



NB Whilst generating steam, a little condensation will be expelled from the **Nozzle** (1), hold the **Multitool** (2) in free air until the steam is emitted.

WARNING! Be careful whilst using this Spot Washer due to a scalding hazard.

6

5. Press the **Vacuum On/Off Button** (20) to activate the vacuum. The **Vacuum indicator** (5) on the main unit will illuminate.
6. Place the **Nozzle** (1) evenly and firmly against the carpet or upholstery. Pull the handle slowly towards you, keeping it pressed against the material to vacuum the dirty water which will be collected in the **Dirty Water Tank** (9).
7. Repeat the above steps if necessary if the spot requires further cleaning.

Hints & Tips for Using Your Spot and Upholstery Washer

Spraying

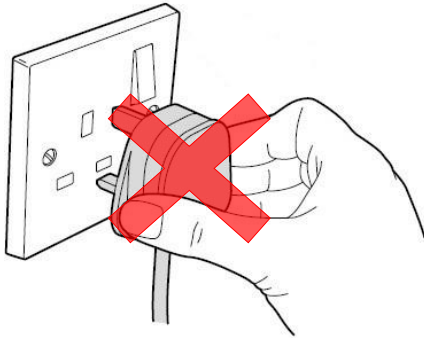
Do not spray water continually in the same place, as the water will quickly be absorbed after spraying. If the water penetrates too deeply and is not sufficiently re-absorbed, mildew could start to form.

Stubborn Marks

If the mark is heavily soiled, use a concentrated carpet cleaning solution readily available from most DIY stores and online sites prior to using the spot washer.

Follow the Carpet Cleaning Solution manufacturers guidelines before using the solution on your carpet.

Emptying the Dirty Water Tank (9)

A

A. Ensure the mains plug is removed from the socket before emptying the **Dirty Water Tank (9)**.

B & C

- B. Once the dirty water has reached the '**MAX**' mark, the **Dirty Water Tank (9)** must be emptied.
- C. Lift the **Dirty Water Tank (9)** up clear of the Spot Washer. Remove the **Dirty Water Tank Lid (10)** and pour out the contents.
- D. Rinse the **Dirty Water Tank (9)** out with warm water and replace the **Dirty Water Tank Lid (10)** before refitting the tank back onto the Spot Washer.

NOTE The Spot Washer will automatically stop vacuuming once the **Dirty Water Tank (9)** is at the MAX mark.

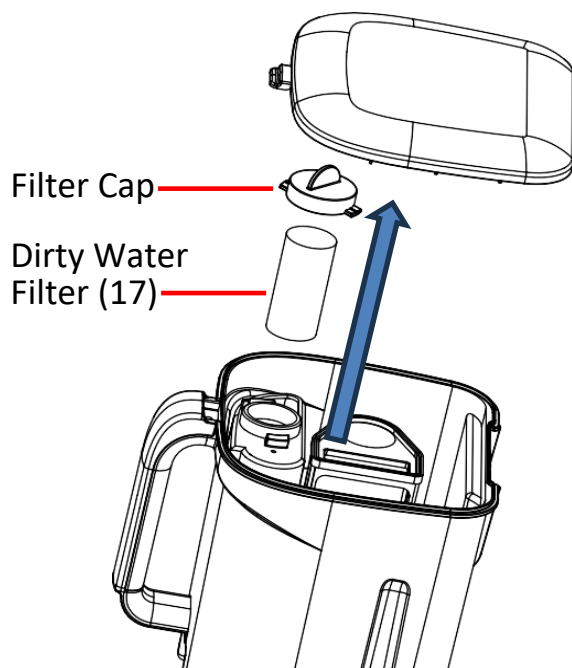


Cleaning & Maintenance of Your Spot & Upholstery Washer

⚠ WARNING! Always disconnect the spot washer from the mains power supply before cleaning.

- Empty both water tanks after use ensuring that the **Dirty Water Tank (9)** has been cleaned out as described above.
- Wipe the outside of the main body with a clean, soft cloth that has been soaked in warm water and gently wrung out.
- If there is any stubborn dirt or grime, apply a small amount of a gentle kitchen detergent to the cloth and wipe the area until it is clean. Thoroughly rinse the cloth and wipe the area again until no detergent residue remains.
- Do not submerge the appliance in water or any other liquids.

Cleaning the Dirty Water Tank Filter (17)



1. Remove the **Dirty Water Tank Lid (10)** and twist off the filter cap anticlockwise and remove the **Dirty Water Filter (17)** as shown left:
2. Rinse the **Dirty Water Filter (17)** in warm running water until clean.
3. Allow the filter to dry for 24 hours before refitting it to the tank.

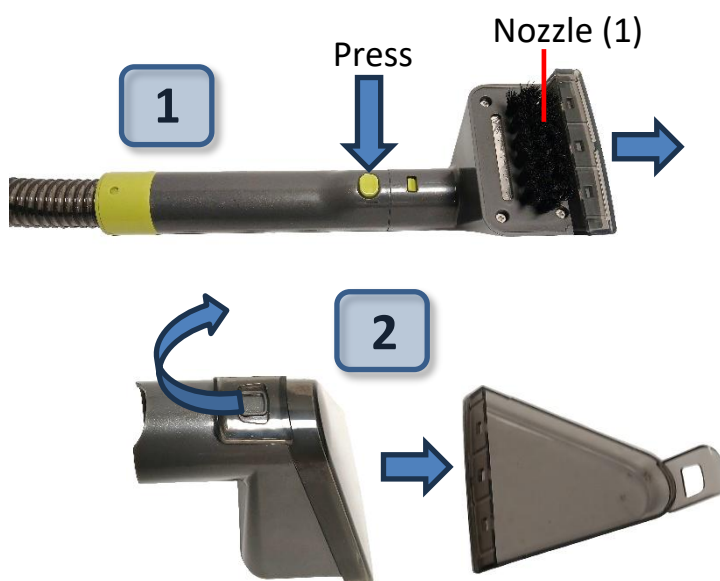
Cleaning the Clean Water Filter (16)



1. Whilst the **Dirty Water Tank (9)** is removed, lift out the **Clean Water Filter (16)** at the bottom of the compartment arrowed left.
2. Rinse the **Clean Water Filter (16)** in warm running water until clean.
3. Allow the filter to dry for 24 hours before refitting it to the compartment.

Cleaning the Nozzle (1)

1. Press the button (arrowed right) on the underside of the **Multitool (2)** and detach the **Nozzle (1)**.
2. Lift the **Nozzle Release Catch (19)** in the direction of the arrow shown right and dismantle the **Nozzle (1)**.
3. Thoroughly rinse the **Nozzle (1)** with water. Carefully remove any dirt and/or blockages.



Automatically Cleaning the Flexible Hose (6)

1. Remove the **Nozzle (1)** from the **Multitool (2)** as described on page 15 and attach the **Hose Cleaning Attachment (18)** to the end of the hose in place of the **Nozzle (1)** as shown below:



2. Ensure the **Dirty Water Tank (9)** is empty and fill the **Clean Water Tank (13)** with water.
3. Press the **Power Button (7)** to power up the Spot Washer, select hot water mode (see page 10) and press the **Vacuum On/Off Button (21)** let the water flow through the **Hose Cleaning Attachment (18)** and back into the hose.
4. Run the Spot Washer until the water in the **Clean Water Tank (13)** has run out and/or the hose is clean.
5. Remove the **Hose Cleaning Attachment (18)** once the hose has been cleaned.
NB There is intentionally a hole in the **Hose Cleaning Attachment (18)**.
Repeat the above process as required.

Storing Your Spot & Upholstery Washer

- Rotate the **Adjustable Cable Tidies (14)** on the back of the Spot Washer outwards and wrap the **Mains Cable (15)** around them.
- **DO NOT** store the Spot Washer with water in either tank – rinse the tanks out and allow to thoroughly dry before storage.
- Store the Spot Washer in a cool, dry place away from direct sunlight.

Non-Rewireable Mains Plug

If your appliance is supplied with a non-rewireable plug fitted to the mains lead and should the fuse need replacing, you must use an ASTA approved one (conforming to BS 1362 of the same rating). Never use a plug with the fuse cover missing. If in doubt, consult a qualified electrician.

If you need to remove the plug – DISCONNECT FROM THE MAINS – and then cut it off the mains lead and immediately dispose of it safely. Never attempt to reuse the plug or insert it into a socket outlet as there is a danger of electric shock.

Technical Specification

Model Number	FLR00192
Rated Voltage	220-240V AC ~ 50-60Hz
Rated Power	1300W
Protection Class	II
Heater Power	700W
Clean Water Tank Capacity	1400ml (max.)
Dirty Water Tank Capacity	1200ml (max.)
Steam Flow Rate	20ml/min. (approx.)
Steam Temperature	100°C
Steam Heating Time	40s (approx.)
Hot Water Temperature	50°C (max.)
Hot Water Heating Time	20s (approx.)
IP Rating	IPX4
Weight (without accessories)	5kg
Dimensions	370mm (l) x 250mm (w) x 335mm (h)
ErP: Power consumption of equipment in standby mode shall not exceed 0.50W	
This equipment complies with Annex III of Commission Regulation (EU) 2023/826	

Recycling Information

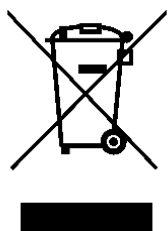
Disposal of the Packaging

Dispose of paper and cardboard in appropriate paper re-cycling facilities.

Dispose of recyclable plastics in appropriate plastic re-cycling facilities.

Dispose of non-recyclable plastics in the appropriate plastics collection service.

Disposal of the Product



You should now recycle your waste electrical goods and in doing so help the environment. This symbol means waste electrical products at the end of their useful life should not be disposed of with normal household waste and not sent to landfill. Please ensure it is taken to a suitable facility for disposal. Check with your Local Authority or retailer for recycling advice or visit www.recycle-more.co.uk or www.weeeireland.ie, enter your postcode to find out your nearest recycling site.

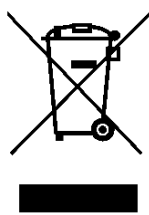
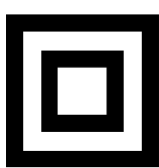
Troubleshooting Guide

<i>Problem</i>	<i>Possible Cause</i>	<i>Solution</i>
Unit fails to turn on.	The unit may not be properly plugged in.	Ensure the plug is fully inserted into the socket and the socket is switched on.
	The fuse may have blown.	Check the fuse by substitution.
	The motor has overheated	Switch off and allow the unit to cool before reuse.
	The power is not switched on.	Press the On/Off Switch
The appliance is not producing any spray.	The water tank is empty.	Fill the water tank with up to 1.4 L of clean water.
	The vacuum hose is dirty or clogged.	Clean the vacuum hose
	The spray trigger is stuck.	Release the trigger, and try to press it again
No Steam Being Produced	Incorrect Mode Selected	Select Steam Mode Select Button (23) until the Mode/Ready Indicator (22) lights red.
Water produced is cold and not hot	Incorrect Mode Selected	Select Steam Mode Select Button (23) until the Mode/Ready Indicator (22) lights yellow.
Low suction during cleaning.	The Dirty Water Tank is full.	Empty the Dirty Water Tank.
	The Dirty Water Tank is not installed properly.	Check the Dirty Water Tank is installed properly.
	Automatic suction stop device	Turn off the appliance and empty the dirty water tank.
	The vacuum hose is dirty, clogged	Clean the vacuum hose
	The filters are blocked	Clean the Filters

Customer Support

Should you require any product information, replacement parts or accessories, please contact our customer care team on 0161 831 7879 (8.30am-4.30pm Monday to Thursday, 8.00am-4.00pm Friday) and select option 3 or by contacting us via email: help@daewooelectricals.com.

- Replacement parts and accessories are guaranteed for 1 year from the date of purchase.
- It is important to note that your warranty becomes invalid should non Daewoo parts or accessories be used with this appliance.

**UK
CA**



WARRANTY

Thank you for purchasing your Daewoo Vacuum.

As part of our commitment to quality, we are offering you an extra 2 years warranty in addition to your 1 year guarantee

Your Daewoo vacuum product is guaranteed for 1 year from the date of original purchase, with proof of purchase or receipt. If any defect should occur due to faulty workmanship or material, your faulty vacuum should be returned to the place of purchase, replacement or refund is at the discretion of the retailer.

The guarantee is subject to the following provisions:

- The product must be correctly installed and operated in accordance with the requirements contained in the instruction manual.
- The product must be used solely for domestic purposes.
- It does not cover general wear and tear, damage, misuse or any consumable parts.
- The guarantee will be rendered invalid if the product is re-sold or has been damaged through inexpert repair.
- The guarantee is only valid within the UK and Eire.

Your standard 1 year guarantee will only be extended to the maximum available for your individual product upon registration. (Note: products must be registered individually and covers the main body and housing). If you do not register your product within 28 days of the original purchase date, your product will only be guaranteed for 1 year.

To validate your extended 2 year warranty please register your purchase online within 28 days of the original purchase date by registering at:*

<https://help.daewooelectricals.com>

or

[Contact Us \(daewooelectricals.com\)](https://help.daewooelectricals.com)

*Your extended warranty is only valid with proof of purchase receipt and subject to the conditions outlined above.

Daewoo is a registered trademark.
Produced and imported under licence by
Eurosonic Group Limited
Brightgate House
1 Brightgate Way
Manchester M32 0TB UK
EU Rep: EuroSonic Magppie (ESM) Ltd. Ireland D05 X006
www.esgltd.com