



\*Please refer to the warranty section for terms of your extended guarantee

# 12L DEHUMIDIFIER



User Manual

## READING AND STORING THE USER MANUAL



Before using this product, please read through this manual carefully paying particular attention to the safety instructions. Failure to do so may result in personal injury or damage to the product.

Carefully save this instruction manual for future reference. Ensure the user manual is included when passing the product on to any third parties.

## IMPORTANT SAFETY INSTRUCTIONS FOR PROPER USE

**When using electrical appliances, basic safety precautions should always be followed.**

Only use the product as described in this user manual. Any other use is considered improper and may result in damage to property or persons. The manufacturer or vendor cannot be held liable for damages or injury incurred through improper or incorrect use.

- **Read and familiarise yourself with all operating instructions before using this Dehumidifier.**
- Before using your unit into the mains, visually check that the unit is intact and has not suffered any transit damage.
- Check that the voltage indicated on the data plate corresponds with that of the local network before connecting the appliance to the mains power supply.
- Always use this appliance on a solid, level, non-flammable surface.
- The Dehumidifier shall not be exposed to dripping or splashing and that no objects filled with liquids, such as vases, shall be placed on the apparatus.
- **DO NOT** immerse the Dehumidifier or its power cord in water or any other liquids.
- **DO NOT** leave the Dehumidifier unattended during use.
- **DO NOT** leave the Dehumidifier unattended whilst connected to a mains power supply.
- Avoid touching any moving parts within the appliance.
- **DO NOT** insert fingers, pencils or any other objects through the guard.

- **DO NOT** push objects into any openings as damage to the product and/or electric shock may occur.
- This appliance can be used by children aged from 8 years and above and persons with reduced physical, sensory or mental capabilities or lack of experience and knowledge if they have been given supervision or instruction concerning use of the appliance in a safe way and understand the hazards involved. Children shall not play with the appliance. Cleaning and user maintenance shall not be made by children without supervision.
- Children of less than 3 years should be kept away unless continuously supervised.
- Close supervision is required when using this Dehumidifier near children.
- **DO NOT** leave this Dehumidifier within reach of children.
- It is imperative to unplug from mains supply after the Dehumidifier has been used, before it is cleaned and whilst being repaired.
- Unplug after each use.
- **DO NOT** operate this appliance if the power cord or plug are damaged. Ensure that the power cord is not stretched or exposed to sharp objects or edges.
- **DO NOT** operate this appliance after a malfunction or after being dropped or damaged in any way.
- **DO NOT** allow the mains cable to hang over sharp edges or come in contact with hot surfaces.
- **DO NOT** run the mains cable under carpets, rugs, etc.
- Individuals who operate or work in the refrigerant circuit must have the appropriate certification issued by an accredited organization that ensure competence in handling refrigerants according to a specific evaluation recognized by associations in the industry.
- Repairs must be performed on the recommendation from the manufacturing company. Maintenance and repairs that require the assistance of other qualified persons must

be performed under the supervision of an individual specified in the use of flammable refrigerants.

- This product is intended for household use only and should not be used for industrial purposes.
- **DO NOT** connect the appliance to an electrical outlet using an extension lead. If an outlet is not available, one should be installed by a qualified electrician.
- **DO NOT** use the mains plug or external timer as a means of switching the Dehumidifier on or off. Use the ON/OFF button located on the control panel.
- Always place the unit on a dry and stable surface.
- The appliance should not be placed in a Bathroom or Wet room.
- **DO NOT** position the Dehumidifier close to sources of heat and/or ignition such as radiators, heaters, other electronic equipment, etc.
- No naked flame sources, such as lighted candles, should be placed on the Dehumidifier.
- The appliance must be installed and used in a room with a floor area larger than 4m<sup>2</sup>.
- This appliance contains R290 refrigerant gas. For quantity see rating label on rear of the unit.
- R290 refrigerant gas complies with the EU environmental directives.
- Refrigerant gas may be odourless, if the appliance is used or stored in an unventilated room, the room must be as such to prevent stagnation of possible leaks of refrigerant gas as there could be a danger of fire or explosion hazard should the refrigerant come into contact with electric heaters, stoves or other sources of ignition.
- The refrigerant system should not be perforated.
- The appliance must be stored in such a way as to prevent mechanical failure.
- **DO NOT** use any accessories or attachments with this product other than those supplied or recommended by

the supplier.

- **DO NOT** use this product for anything other than its intended use.
- The Dehumidifier must always be stored and transported upright, otherwise irreparable damage be caused to the compressor; if in doubt, wait at least 24 hours before restarting the unit.
- Avoid restarting the Dehumidifier unless 3 minutes have passed since being turned off. This prevents damage to the compressor.

### Explanation of Symbols

The following warning symbols or words are used in this instruction manual:



Products labelled with UK Conformity Assessment identifies products conforming to UK statutory requirements.



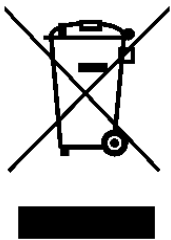
Products labelled with this symbol conform to applicable provisions of the European Economic Area.



This symbol provides useful additional information on the use of this product.



This symbol identifies that the supply uses an alternating current mains supply.



You should now recycle your waste electrical goods and in doing so help the environment. This symbol means waste electrical products at the end of their useful life should not be disposed of with normal household waste and not sent to landfill. Please ensure it is taken to a suitable facility for disposal. Check with your Local Authority or retailer for recycling advice or visit [www.recycle-more.co.uk](http://www.recycle-more.co.uk) enter your postcode to find out your nearest recycling site.



These symbols indicate the presence of flammable materials, in this instance R290 Refrigerant Gas.



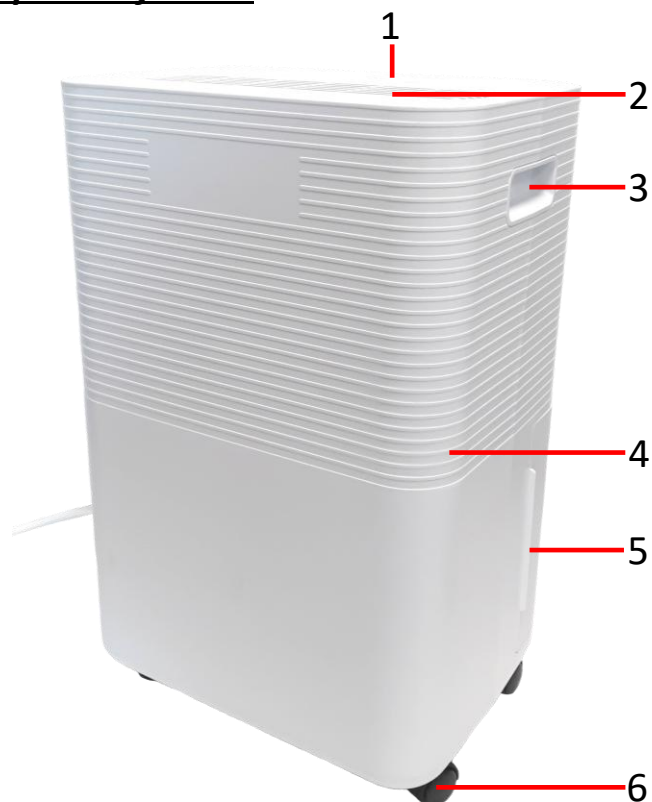
### Before First Use of Your Dehumidifier

Remove all packing materials and discard responsibly.

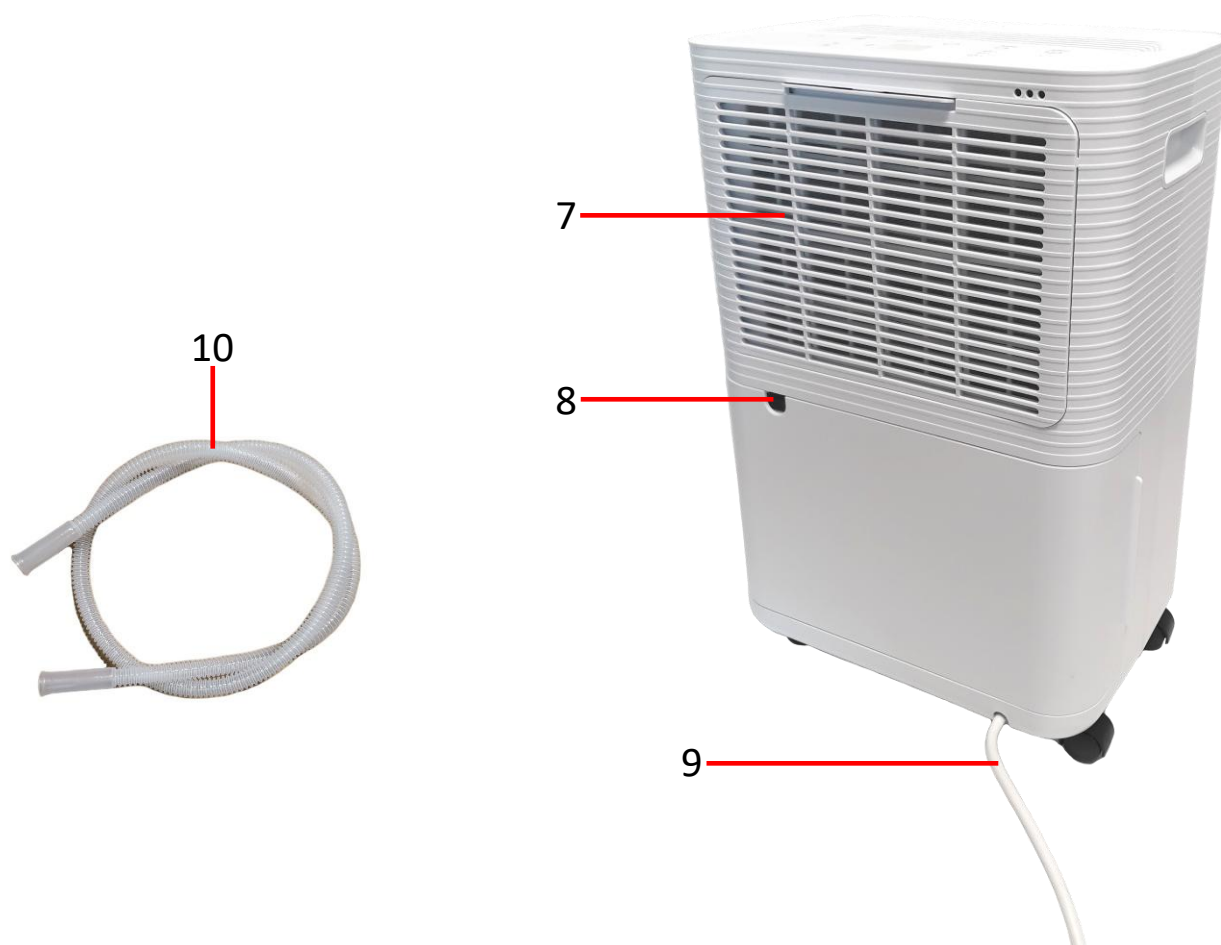
Ensure all parts are present (if applicable) see **Description of Parts** below.

**i** This Dehumidifier will not operate if the room temperature is  $< 5^{\circ}\text{C}$ , or  $> 35^{\circ}\text{C}$

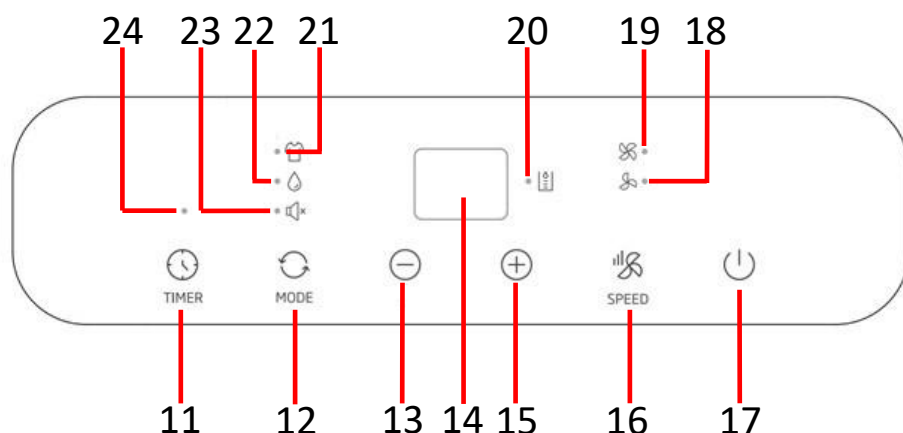


**Description of Parts**

- 1. Control Panel
- 2. Air Outlet
- 3. Handle(s)
- 4. Main Body
- 5. Water Tank (rear)
- 6. Castors
- 7. Air Filter
- 8. Continuous Drain Outlet
- 9. Mains Cable
- 10. Drain Hose



## Description of Parts – Control Panel



- 11. Timer Button
- 12. Mode Button
- 13. Decrease Button
- 14. LED Display
- 15. Increase Button
- 16. Fan Speed Button
- 17. Power Button
- 18. Low Fan Speed Indicator
- 19. High Fan Speed Indicator
- 20. Tank Full Indicator
- 21. Laundry Mode Indicator
- 22. Dehumidify Indicator
- 23. Quiet Mode Indicator
- 24. Timer Indicator

## Installation

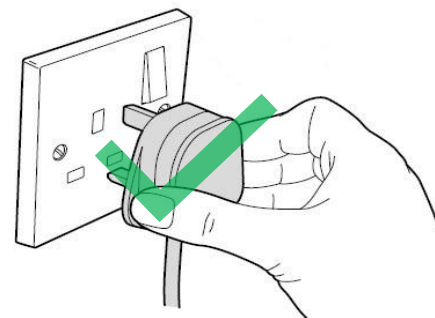
- Place the unit on a firm, level surface in an area with at least 20cm of free space on all sides to allow for proper air circulation.
- Never install the unit where it could be subject to:
  1. Heat sources such as radiators, stoves or other products that produce heat.
  2. In an area where oil or water may be splashed.
  3. Direct sunlight.
  4. Mechanical vibration or shock.
  5. Excessive dust.
  6. Lack of ventilation, such as cabinet or bookcase.
  7. An uneven surface.





## Using Your Dehumidifier

- Insert the mains plug into the nearest available socket.



## Power

- Press the **Power Button** (17) to power the unit up.
- The Dehumidifier will power up in Dehumidifier mode.
- The **LED Display** (14) will show the current humidity level.
- The **Dehumidify Indicator** (22) will illuminate, the **Low Fan Speed Indicator** (18) will also illuminate as shown below:



- Press the **Power Button** (17) again to turn the unit off, the compressor will stop immediately and the fan will shut down after a 30 second delay.



## Selecting Modes MODE

There are 3 modes to select from, press the **Mode Button** (12) to select from:

### 1. Dehumidify Mode

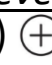

Press the **Mode** (12) button until the **Dehumidify Indicator** (22)  illuminates.

### Setting the Fan Speed



Press the **Fan Speed Button** (16) SPEED to select the high or low fan speeds which will be shown by the **High Fan Speed Indicator** (19) or the **Low Fan Speed Indicator** (18) whichever is selected.

### Setting the Humidity Level


Press the **Increase** (15)  or **Decrease** (13)  buttons to set the desired humidity level. The range of target humidity settings are Co, 30%, 35%, 40%, 45%, 50%, 55%, 60%, 65%, 70%, 75%, 80%, 85%, 90%, where 'Co' is Continuous running of the dehumidifier.

The **LED Display** (14) will flash whilst showing the set humidity level, shortly after setting the level the display will stop flashing and return to showing the actual humidity level.


### Notes about the Dehumidifier

- A. If the "Co" (Continuous) dehumidification is selected, the dehumidifier will continue to run (compressor and fan) regardless of the humidity level.
- B. If the humidity is higher than or equal to 3% of the set humidity, the compressor and fan will run in dehumidify mode.
- C. Once the humidity drops below 2% of the set humidity, the compressor will stop dehumidifying and the fan will stop after 3 minutes.



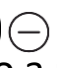


### 2. Laundry Mode

Press the **Mode** (12) until button until the **Laundry Mode Indicator** (21)  illuminates. In this mode, the Dehumidifier will run continuously and the humidity and fan speed setting cannot be adjusted.

### 3. Quiet Mode

Press the **Mode** (12) until button until the **Quiet Mode Indicator** (23)  illuminates. In this mode, the humidity level can be set but the fan speed setting cannot be adjusted.

### Using the Timer TIMER

- Press the **Timer Button** (11)  TIMER to enter the timer mode.
- Press the **Increase** (15)  or **Decrease** (13)  buttons to set the desired number of hours in 1 hour increments up to a maximum of 24 hours, the time will be displayed on the **LED Display** (14).
- The set time on the **LED Display** (14) will show as "07" for 7 hours, etc.
- The **Timer Indicator** (24) above the **Timer Button** (11) will illuminate during the set time period. After the set time period has ended, the **Timer Indicator** (24) will go out.
-  If the Timer is set with the unit on, the Timer will turn the Dehumidifier **off** at the end of the set time.
-  If the Timer is set with the unit in standby mode, (i.e. with the Dehumidifier plugged in but not running), the Timer will turn the Dehumidifier **on** at the end of the set time.
- To cancel the timer, press the **Timer Button** (11) until the **LED Display** (14) returns to "00".

### Water Tank Full Alarm

1. When the **Water Tank** (5) is full, the **Tank Full Indicator** (20) will illuminate, the Dehumidifier will stop running and the alarm will sound.
2. Press any button to stop the alarm. The compressor and fan will shut down and all functions will pause until the **Water Tank** (5) has been emptied and replaced.

---

### Emptying the Water Tank (5)

1. Grasp the **Water Tank** (5) at the sides and pull the tank out:



2. Remove the tank lid and empty the tank:



**DO NOT** remove the float from the tank otherwise the water sensor will operate continuously and the dehumidifier will not operate.

3. Replace the lid on the **Water Tank** (5) and then replace the tank into the Dehumidifier ensuring that it is full pushed back into place:



### **Continuous Drainage**

If preferred, continuous drainage can be used with the appliance rather than emptying the **Water Tank** (5).

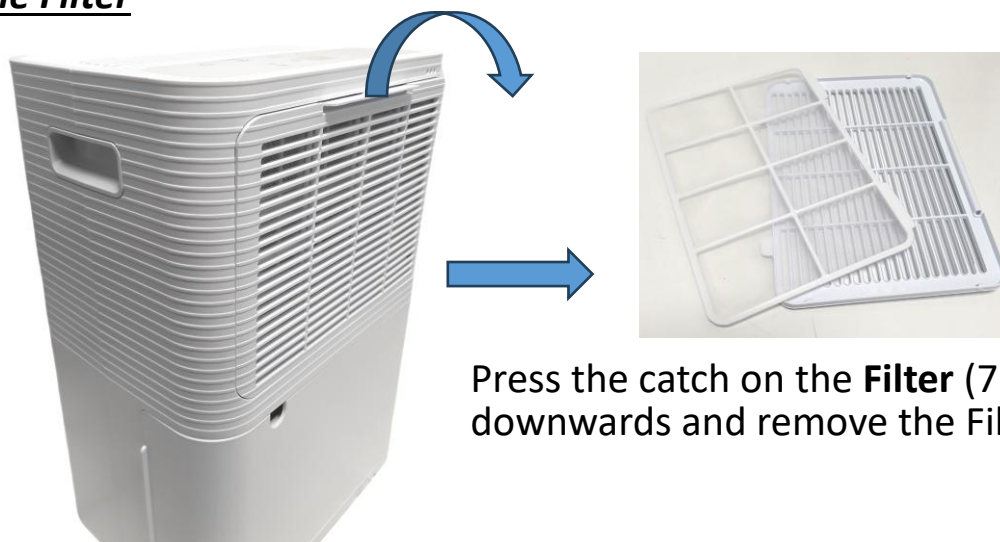
For this option:

1. Remove the **Water Tank** (5) as described above.
2. Fit the **Drain Hose** (10) to the hose point on the rear of the **Main Body** (4) as shown right:



3. Replace the **Water Tank** (5) as shown left – guiding the **Drain Hose** (10) through the notch at the top of the **Water Tank** (5).
4. Run the hose into a suitable drainage point, ensuring that the hose is not kinked or bent and leads down away from the unit.

### Cleaning the Filter



Press the catch on the **Filter (7)** downwards and remove the Filter.

### Storage

Whilst not in use for long periods, please ensure that you:

1. Empty the water tank and wipe away any excess moisture from the tank and body.
2. Clean the filter.
3. Place the appliance in a cool, dry environment away from direct sunlight.

### Care and Use of Your Dehumidifier

- Always disconnect the Dehumidifier from the mains supply before cleaning.
- Do not remove the float from the water tank as this will prevent the unit from starting.
- Clean the water tank with warm soapy water, do not use harsh abrasive chemicals.
- Clean the body of the unit with a soft damp cloth.
- To clean the filter, remove from the body and use a vacuum cleaner to remove any built up dust or lint.
- If the filter is badly soiled it can be washed in warm soapy water and a mild detergent.
- Dry thoroughly before refitting to the unit.

## Technical Specification

Product Code	COL1611
Rated Voltage	220-240V~
Rated Frequency	50Hz
Rated Current	1.6A
Rated Input Power	280W
Rated Dehumidifying Capacity	12L/Day (30°C, 80%RH)
Water Tank Capacity	2L
Maximum Refrigerant Charge	R290/46g
Operating Temperature Range	5°C – 35°C
Net Weight	10.26kg
Permissible Excessive Operating Pressure	Discharge 2.0MPa
	Suction 0.9MPa
Maximum Allowable Pressure	Discharge 2.6MPa
	Suction 1.0MPa
Dimensions (Approx.)	282mm (w)x204mm (d)x430mm (h)
IP Rating	IPX0
Protection Class	I (This Appliance must be Earthed)

### Non-Rewireable Mains Plug

If your appliance is supplied with a non-rewireable plug fitted to the mains lead and should the fuse needed replacing, you must use an ASTA approved one (conforming to BS 1362 of the same rating). Never use a plug with the fuse cover missing. If in doubt, consult a qualified electrician.

If you need to remove the plug -**DISCONNECT FROM THE MAINS**- and then cut it off the mains lead and immediately dispose of it safely. Never attempt to reuse the plug or insert it into a socket outlet as there is a danger of electric shock.



## **Recycling Information**

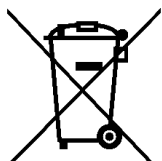
### **Disposal of the Packaging**

Dispose of paper and cardboard in appropriate paper re-cycling facilities.

Dispose of plastics in the appropriate plastics collection service.

Dispose of non-recyclable plastics in the appropriate plastics collection service.

### **Disposal of the Product**



You should now recycle your waste electrical goods and in doing so help the environment. This symbol means waste electrical products at the end of their useful life should not be disposed of with normal household waste and not sent to landfill. Please ensure it is taken to a suitable facility for disposal. Check with your Local Authority or retailer for recycling advice or visit [www.recycle-more.co.uk](http://www.recycle-more.co.uk) enter your postcode to find out your nearest recycling site.

## ***Customer Support***

Should you require any product information, replacement parts or accessories, please contact our customer care team on 0161 831 7879 (8.30am-4.30pm Monday to Thursday, 8.00am-4.00pm Friday) and select option 3 or by contacting us via email: [help@daewooelectricals.com](mailto:help@daewooelectricals.com).

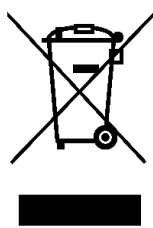
- Replacement parts and accessories are guaranteed for 1 year from the date of purchase.
- It is important to note that your warranty becomes invalid should non Daewoo parts or accessories be used with this appliance.

### **Trouble Shooting Guide**

<b><i>Problem</i></b>	<b><i>Possible Cause</i></b>	<b><i>Possible Solution</i></b>
Not working	No power	Ensure that the mains plug is inserted into a socket and that it is switched on.
	Water Full Indicator is illuminated.	Empty the water tank
	Room temperature is < 5°C, or > 35 °C	The unit will not operate below 5°C or above 35°C.
Unit not performing well	Is the air filter clogged?	Clean the air filter.
	Is the air intake obstructed?	Remove the obstruction from the air intake.
No air intake	Is the filter clogged?	Clean the air filter.
Noisy when running	Ensure the unit is on a level surface.	Place the unit on a solid, level surface.
	Is the filter clogged?	Clean the air filter.
E1	Coil sensor short circuit or open circuit.	Change the sensor/contact customer services.

## Notes

UK  
CA



**Notes**

## **Notes**



## WARRANTY

*Thank you for purchasing your Daewoo product.*

*As part of our commitment to quality, we are offering you an extra 2 years warranty in addition to your 1 year guarantee*

Your Daewoo product is guaranteed for 1 year from the date of original purchase, with proof of purchase or receipt. If any defect should occur due to faulty workmanship or material, your faulty product should be returned to the place of purchase, replacement or refund is at the discretion of the retailer.

The guarantee is subject to the following provisions:

- The product must be correctly installed and operated in accordance with the requirements contained in the instruction manual.
- The product must be used solely for domestic purposes.
- It does not cover general wear and tear, damage, misuse or any consumable parts.
- The guarantee will be rendered invalid if the product is re-sold or has been damaged through inexpert repair.
- The guarantee is only valid within the UK and Eire.

Your standard 1 year guarantee will only be extended to the maximum available for your individual product upon registration. (Note: products must be registered individually and covers the main body and housing). If you do not register your product within 28 days of the original purchase date, your product will only be guaranteed for 1 year.

*To validate your extended 2 year warranty\*please register your purchase online within 28 days of the original purchase date by registering at:*

**<https://help.daewooelectricals.com>**

***or***

**[Contact Us \(daewooelectricals.com\)](https://help.daewooelectricals.com)**

*\*Your extended warranty is only valid with proof of purchase receipt and subject to the conditions outlined above.*

Daewoo is a registered trademark.  
Produced and imported under licence by  
Eurosonic Group Limited

Brightgate House  
1 Brightgate Way  
Manchester M32 0TB UK  
EU Rep: EuroSonic Magppie (ESM) Ltd. Ireland D05 X006  
[www.esgltd.com](http://www.esgltd.com)