



Yale®

ALL BIKE LOCKS ARE NOT EQUAL. NEVER COMPROMISE.

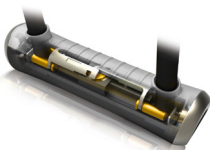
**FOR PEACE OF MIND, PROTECT
YOUR BIKE WITH YALE.**



Whether you use your bike for fun, the morning commute or in sporting competitions, our new range of locks have been designed to keep your bike secure.

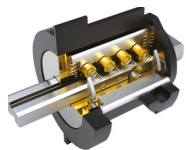
- Constructed with a patented four point locking mechanism for increased resistance to pulling, jacking, prying and twisting
- Pick, pull and bump resistant mechanism leaves bump keys useless
- Cylinders encased with ultra hardened steel shackles
- Coated to protect your bicycle or powersport vehicle from scratches
- Keyway seals to shield internal parts from the elements
- Universal mounting brackets
- Product guarantees from 2 years to lifetime across the range
- Ratings by the respected Sold Secure rating system

RANGE FEATURES:



ULTRA SECURE FOUR POINT LOCKING

For maximum resistance to pulling & twisting



PICK, PULL, BUMP RESISTANT MECHANISMS

Rendering bump keys useless



TWIN LOCK DOWN

For ultimate pull resistance

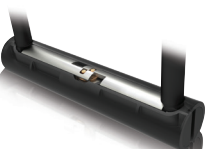


STEEL BALL COMBO GEAR SYSTEM

Resists picking & pulling

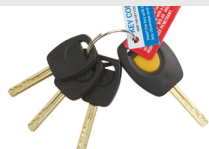


TOUGH VINYL COATINGS ON CABLES



DOUBLE SECURED CROSSBAR

High resistance to pulling & twisting



4 LASERCUT KEYS, INCLUDING 1 WITH MICRO-LIGHT



UNIVERSAL MOUNTING BRACKET

For increased convenience



KEYWAY PROTECTION

Keeps the elements out of the mechanism



DOUBLE RUBBER PROTECTIVE COATINGS

Protects paint & finishes & the internals from impact

Introducing the new bike lock range from Yale

All bike locks are not equal. Never compromise.
For peace of mind, protect your bike with Yale.

Yale®

Description	Yale Maximum Security U-lock	Yale Maximum Security U-lock with cable	Yale Maximum Security Chain & lock 1100mm	Yale Maximum Security Chain & lock 1800mm	Yale High Security U-lock	Yale High Security U-lock with Cable	Yale Standard Security Combination U-lock	Yale Standard Security Combination Cable Lock	Yale Security Cable 1200mm	Yale Security Cable 2200mm	Yale Chain 1100mm	Yale Chain 1800mm
Image												
Part no.	YUL3/14/230/1	YUL3C/14/230/1	YCL3/10/110/1	YCL3/10/180/1	YUL2/13/230/1	YUL2C/13/230/1	YUL2/13/230/1	YCC1/10/185/1	YC1/10/120/1	YC1/10/220/1	YCL3/10/110/1CH	YCL3/10/180/1CH
MOQ (with supplier)	100	100	100	100	100	100	100	100	100	100	100	100
Outer qty.	8	8	2	2	8	8	8	48	24	12	2	2
Warranty	Lifetime	Lifetime	Lifetime	Lifetime	5 years	5 years	2 Year	2 Year	n/a	n/a	Maximum Lifetime	Maximum Lifetime
Sold Secure rating	Gold	Gold	Gold	Gold	Silver	Silver	n/a	n/a	n/a	n/a	n/a	n/a
Yale Rating	Maximum 10/10	Maximum 10/10	Maximum 10/10	Maximum 10/10	High 8/10	High 8/10	Standard 6/10	Standard 5/10	n/a	n/a	n/a	n/a
Dimensions Height (H) Width (W) Diameter (D) Cable/Chain length (CL)	H: 230mm W: 115mm D: 14mm	H: 230mm W: 115mm D: 14mm CL: 1200mm D: 10mm	CL: 1000mm	CL: 1800mm	H: 230mm W: 115mm D: 13mm	H: 230mm W: 115mm D: 13mm CL: 1200mm D: 10mm	H: 230mm W: 115mm D: 13mm	CL: 1800mm D: 10mm	CL: 1200mm D: 10mm	CL: 2200mm D: 10mm	CL: 1100mm D: 10mm	CL: 1800mm D: 10mm
Bike Bracket for storage – yes/no	✓	✓	–	–	✓	✓	✓	–	–	–	–	–
Weight	1.46kgs	1.74kgs	3.04kgs	4.63kgs	1.2kgs	1.48kgs	1.2kgs	0.4kgs	0.3kgs	0.474kgs	2.34kgs	3.94kgs
Number of keys	4 laser cut keys including 1 with a micro-light	4 laser cut keys including 1 with a micro-light	4 laser cut keys including 1 with a micro-light	4 laser cut keys including 1 with a micro-light	4 laser cut keys including 1 with a micro-light	4 laser cut keys including 1 with a micro-light	N/A	N/A	N/A	N/A	N/A	N/A
Feature 1	Ultra hardened shackle for maximum cut and impact resistance		Titanium enforced hexagonal hardened steel chain offers protection from all forms of attack		Ultra hardened shackle for maximum cut and impact resistance		Ultra hardened shackle and crossbar for maximum cut and impact resistance	Twin lock secures cable to lock head in two places	Extra flexible steel cables for ease of use		Titanium enforced hexagonal hardened steel chain offers protection from all forms of attack	
Feature 2	Four point locking heavy duty crossbar provides maximum pull protection		Four point locking heavy duty crossbar provides maximum pull protection		Double point locking heavy duty crossbar provides high pull protection		Double rubber bumper for protection against scratches	Protective vinyl coating to prevent painted surfaces from scratches	Vinyl coatings protect paint and finishes			
Feature 3	High Security lock provides resistance from pick, pull, bump and drill attacks		High Security lock provides resistance from pick, pull, bump and drill attacks		High Security lock provides resistance from pick, pull, bump and drill attacks			Steel ball click gear system that resists picking and pulling	Attached Velcro straps to contain cable			
Feature 4	Double rubber bumper for protection against scratches		Double rubber bumper for protection against scratches		Double rubber bumper for protection against scratches			Integrated phosphorescent 4 digit resettable combination lock				