

Birlea®

Assembly Instructions

**Thank you for
purchasing a
Birlea product**

For a chance to win a Love2Shop voucher simply post a picture of your new product on your preferred social channels tagging Birlea Furniture. One winner will be selected at random each month.

*Terms & conditions may apply.

Are you happy with your purchase?

Yes: That's great, we would love to hear more from you. Please leave us a review on our Trustpilot link on the QR code here. Your feedback will be greatly appreciated.



No: If for any reason there is something missing, indifferent or incorrect with your order, please contact the retailer that you purchased your item from.

The products takes 1 hours 15 minutes to build along with 1 man builds.



www.birlea.com

ASSEMBLY INSTRUCTIONS
STOCKWELL 2 DRAWER BEDSIDE RUSTIC
OAK EFFECT

IMPORTANT : READ THESE INSTRUCTIONS CAREFULLY BEFORE ATTEMPTING TO ASSEMBLE OR USE YOUR STOCKWELL 2 DRAWER BEDSIDE RUSTIC.

PLEASE KEEP THESE INSTRUCTIONS FOR FUTURE REFERENCE.

ASSEMBLY:

Assembly should be carried out with this item laying flat, not standing upright.

Assemble on a soft, clean surface to prevent damages.

To erase the numbers printed on the pieces, use the rubber inside the accessories pack.

HEALTH & SAFETY:

DO NOT use this product if any parts are missing, damaged or worn.

DO NOT use this product unless all fixings are secured.

Always use on a level, even surface.

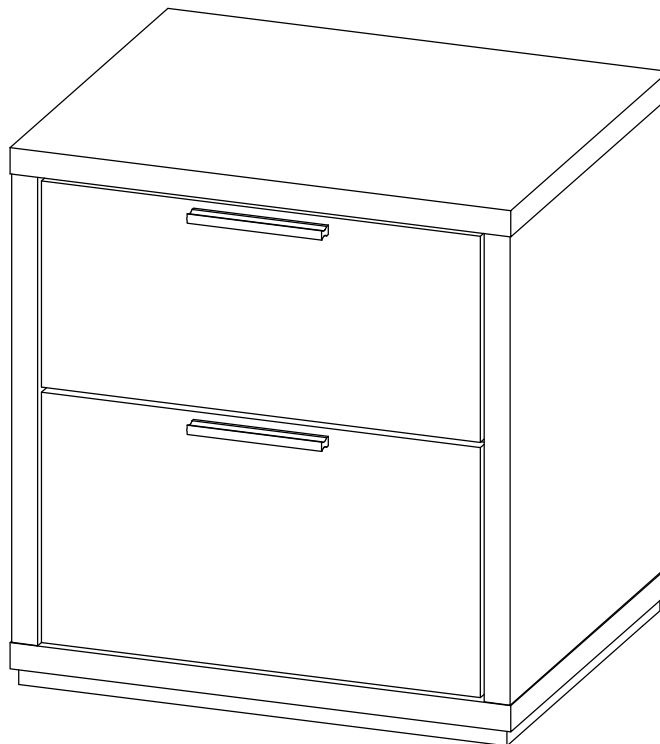
CARE & MAINTENANCE:

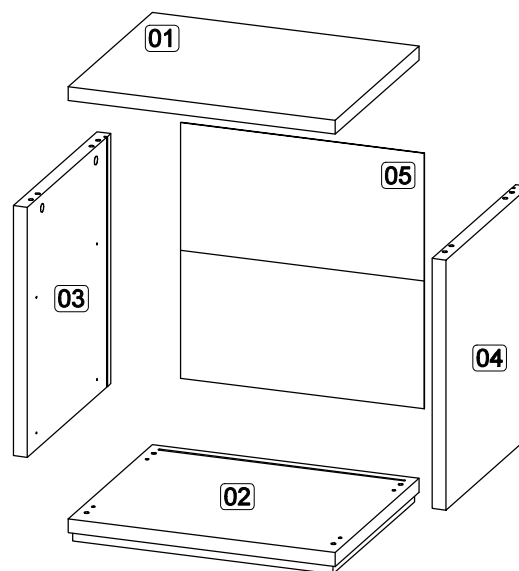
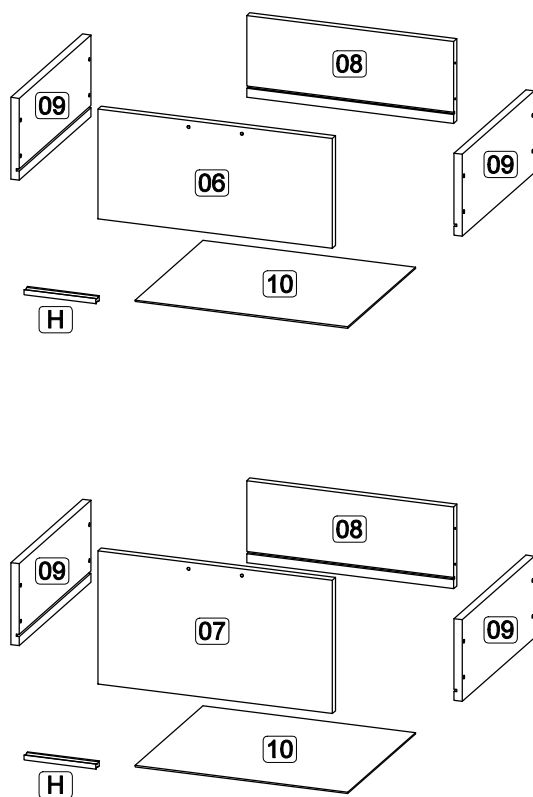
Periodically check all screws & fixings to ensure they are secure.

DO NOT push this product as this will cause damage.

Always lift this product with two people to reposition.

Keep any sharp objects away from this product.

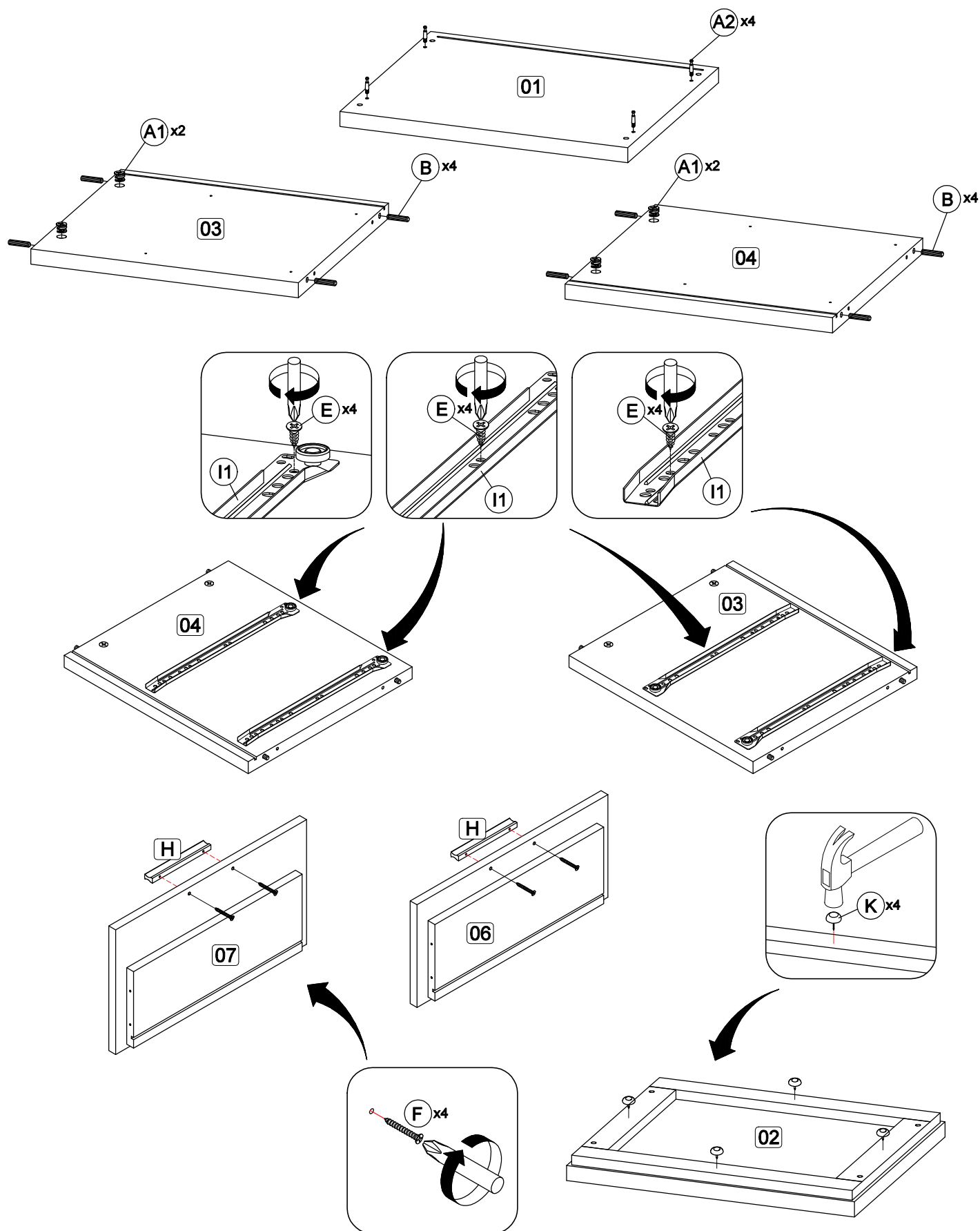




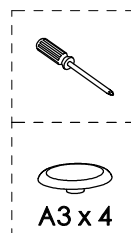
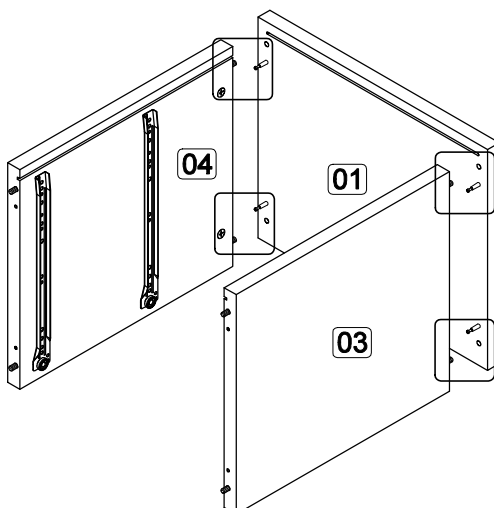
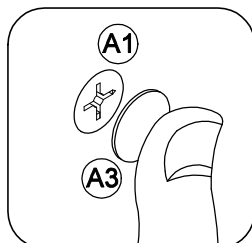
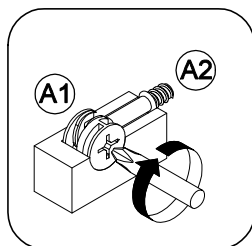
Parts List			Hardware List		
Part	Description	Qty	Part	Description	Qty
01	Top panel	1	A1	Cam lock 	4
02	Bottom panel	1	A2	Minifix screw 	4
03	Side panel (Left)	1	A3	Plastic cap 	4
04	Side panel (Right)	1	B	M8 x 30mm Wood Dowel 	8
05	Back panel	1	C	M6 x 60mm CSK Cap Wood screw 	4
06	Drawer front (Up)	1	D	Allen key M4 	1
07	Drawer front (Down)	1	E	M3.5 x 16mm C.B Screw 	24
08	Drawer back	2	F	M4 x 25mm C.B Screw 	4
09	Drawer side	4	G	M4 x 38mm C.B Screw 	16
10	Drawer bottom	2	H	PVC Handle 7050.96 	2
** You will need a small mallet and a screwdriver for assembly. ** Some screws and wooden dowel may remain.			I1	14" Drawer slide (Left / Right) 	4
			I2	14" Drawer slide (Left / Right) 	4
			J1	Stud 192 	8
			J2	Stud 192 screw 	8
			K	5/8 PVC Nail Leg 	4

Birlea®

Step 1: Prepare these parts for assembly using hardware parts A1, A2, B, D, E, F, H, I1 and K.
DO NOT use any power tools as this may damage the frame and will invalidate any claim.

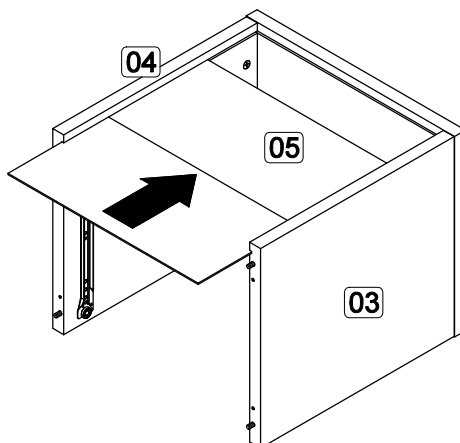


Step 2: Attach side panel (3) and (4) to top panel (1) using hardware A1 and A2 with a screwdriver (not provided). DO NOT use any power tools as this may damage the frame and will invalidate any claim.



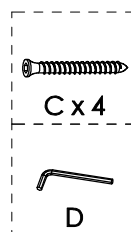
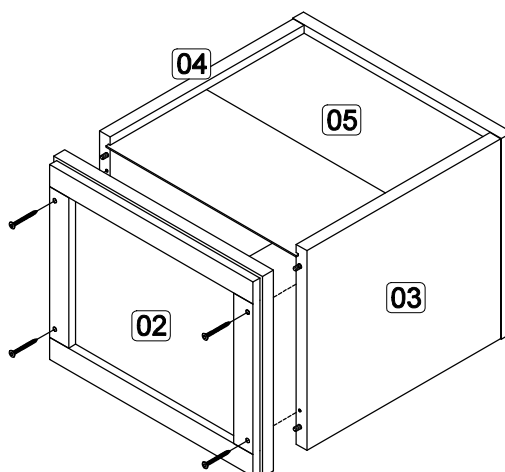
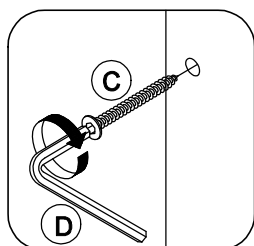
Step 3: Insert back panel (5) along the slot.

DO NOT use any power tools as this may damage the frame and will invalidate any claim.



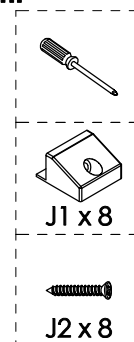
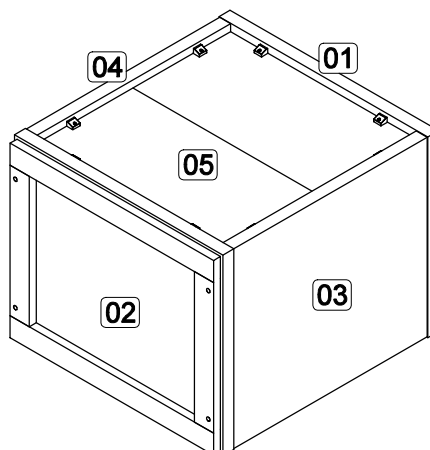
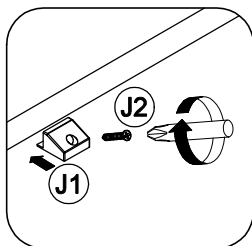
Step 4: Attach bottom panel (2) to side panel (3) and (4) using hardware C and D.

DO NOT use any power tools as this may damage the frame and will invalidate any claim.



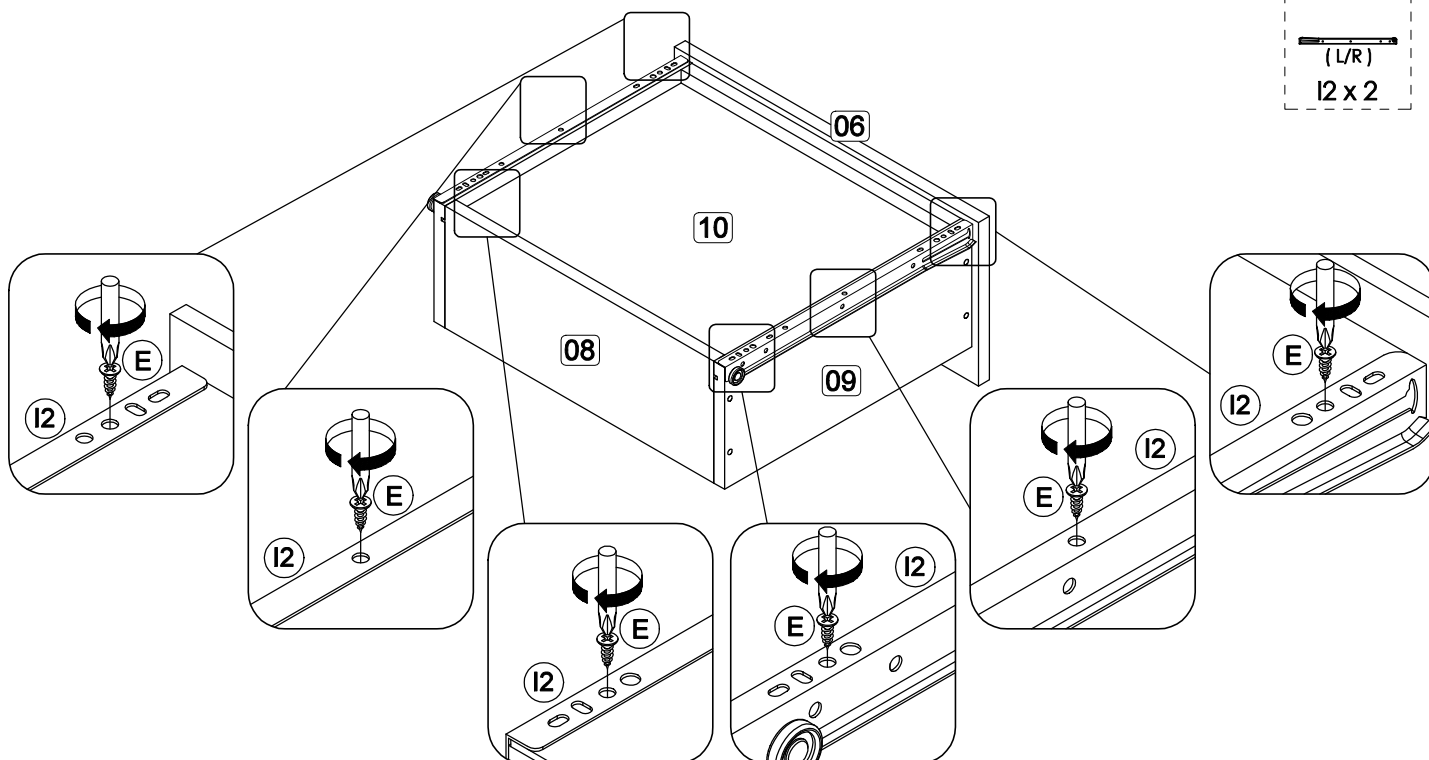
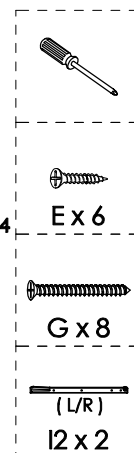
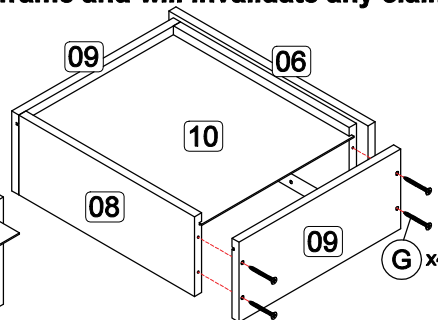
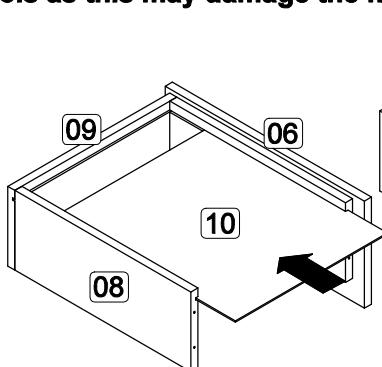
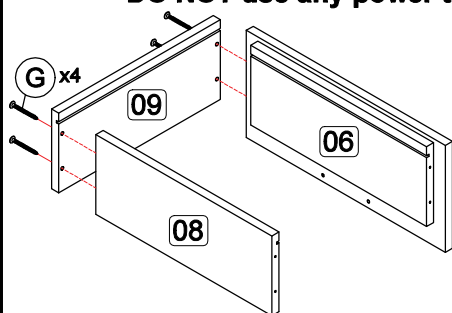
Step 5: Attach hardware J1 into top panel (1), bottom panel (2), side panel (3) and (4) using hardware J2 with a screwdriver (not provided).

DO NOT use any power tools as this may damage the frame and will invalidate any claim.



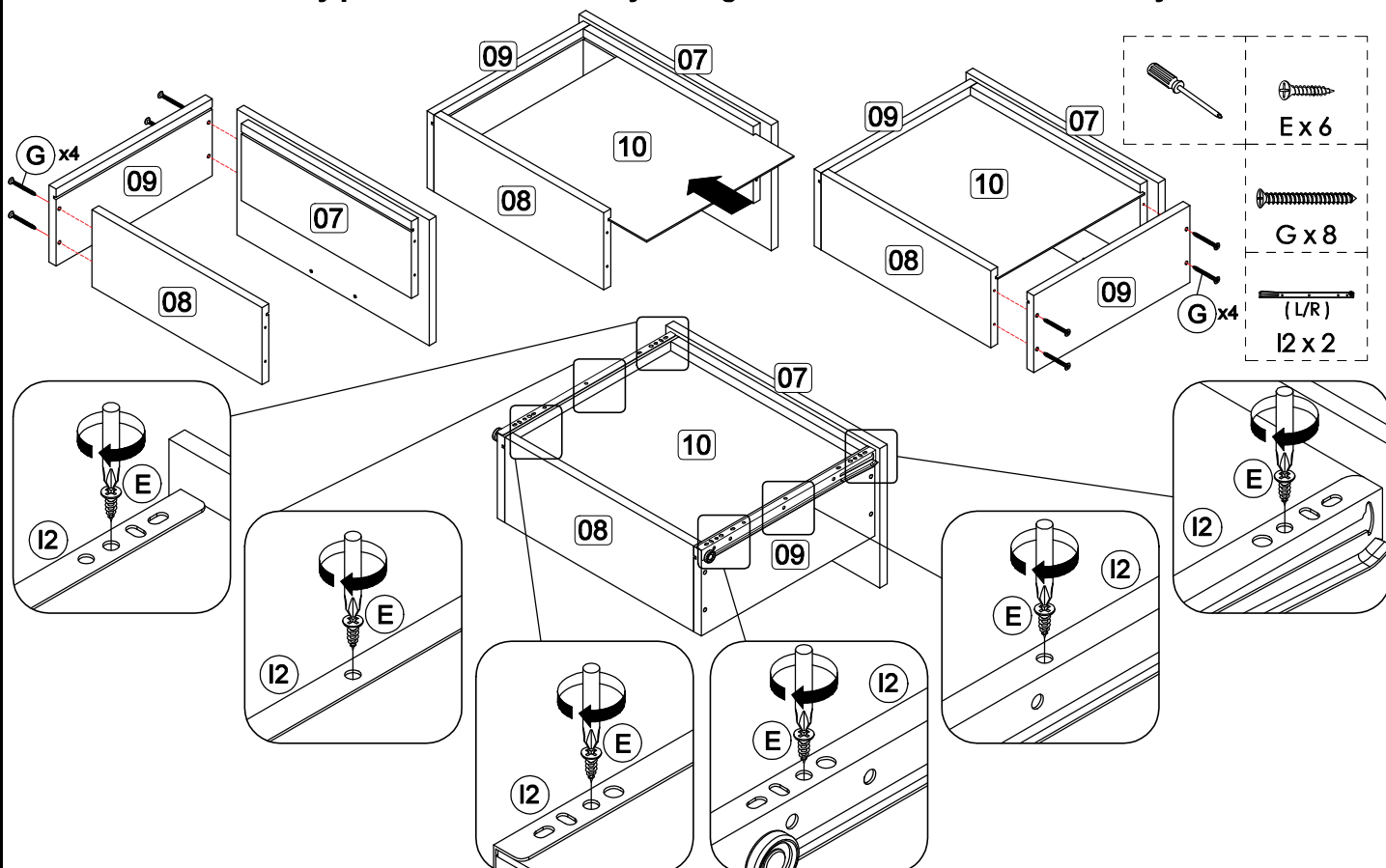
Step 6: Assemble the drawer components using hardware E, G and I2.

DO NOT use any power tools as this may damage the frame and will invalidate any claim.



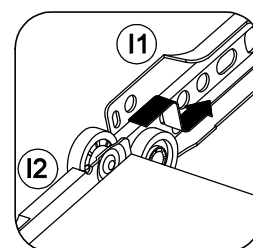
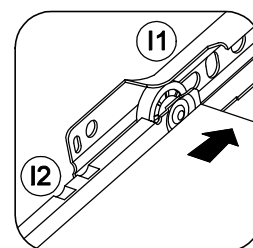
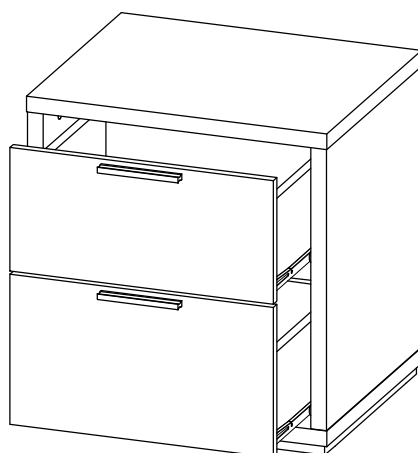
Step 7: Assemble the drawer components using hardware E, G and I2.

DO NOT use any power tools as this may damage the frame and will invalidate any claim.



Step 8: Assemble the drawer in place along the drawer slides.

DO NOT use any power tools as this may damage the frame and will invalidate any claim.



Additional Information:

- For complete product information, images and dimension diagrams please visit the website www.birlea.com
- If you have any issues with your item please contact the retailer directly you purchased it from who will be able to resolve any issues with Birlea.
- Why don't you send us photos of your assembled furniture to info@birlea.com to be shared in our #birleahome feature on instagram.

Birlea®