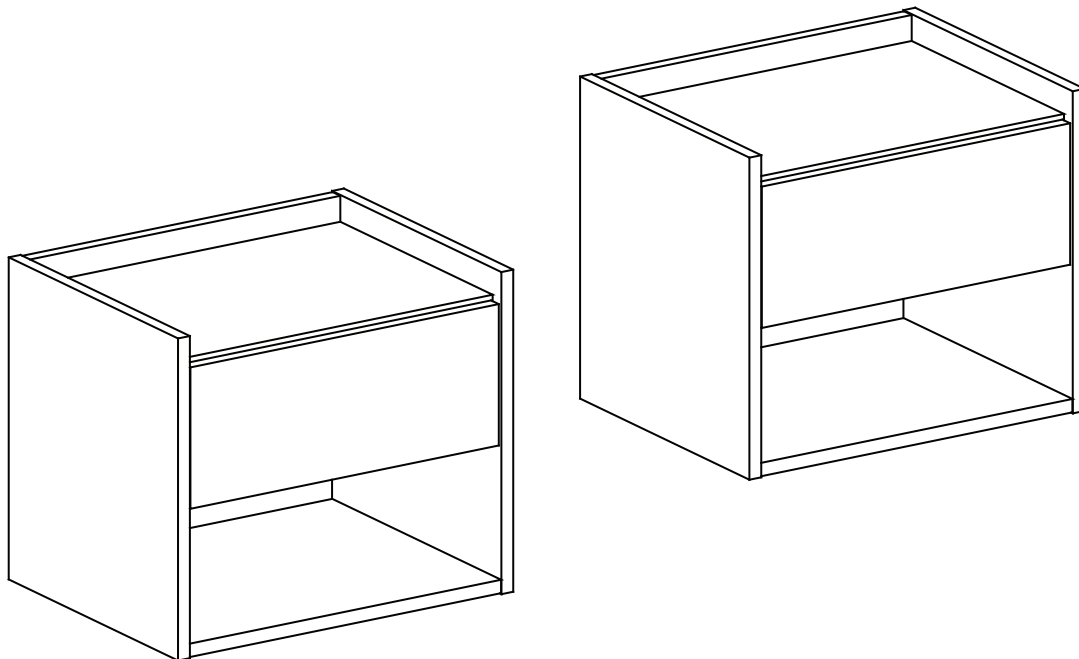


# HARMONY - WALL MOUNTED BEDSIDE TABLE ASSEMBLY INSTRUCTIONS

Thank you for purchasing the **WALL MOUNTED BEDSIDE TABLE**.  
Please read the instructions carefully to ensure safe operation of the product.



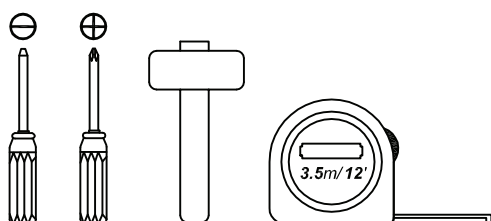
Size: (W)425 x (D)330 x (H)360mm

**PLEASE READ** this sheet prior to assembly to familiarise yourself with the various stages of construction.

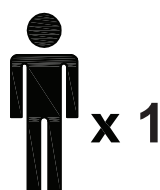
Carefully open the pack supplied and check the contents against the parts and fittings check list. Do not destroy any of the packaging until you are certain that you have all the necessary parts for the assembly.

**CAUTION:** There are small components used in the construction of this unit. These loose items should be kept away from young children whilst assembling your unit to avoid the danger of choking hazards.

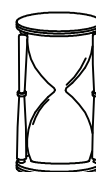
## Tools Required



## Person Required



## Approximate Assembly Time



**30 Minute**

Batch No : PO# \*\*\*\*

Page 1 of 14

V1-09/23

## IMPORTANT - READ CAREFULLY - RETAIN THESE INSTRUCTIONS FOR FUTURE REFERENCE.

### INFORMATION

- This product is intended for a maximum weight of **3 kgs** and drawer load capacity **1kg** each. Do not exceed this weight.
- Due to the size of this product we recommend that it is assembled in the room intended for use.
- When you are ready to start, make sure that you have the right tools, plenty of space and a clean, dry area for assembly
- Unwrap all packaging materials and place the components on top of the carton box or on a clean floor to prevent it from scratching.
- Check the pack and make sure you have all the parts listed.
- Ensure that this product is fully assembled as illustrated before use.
- Check all screws or bolts are tightened and inspect regularly.
- Keep small parts out of reach of children.
- Tools not included.

### WARNINGS

- DO NOT use power tools to construct this product.
- DO NOT over tighten screws or bolts.
- DO NOT use this product if parts are missing, damaged or worn.
- DO NOT stand or sit on this.
- We recommend the use of the wall safety bracket provided for safety reasons. N.B. Wall fixings suitable for a solid wall are included although the wall plug provided may not be suitable for other type of walls such as hollow walls. Fixings suitable for your wall type must be obtained separately.  
If in doubt please consult a qualified trade person. **Warning:** Always ensure the area to be drilled is free from hidden electrical wires, water and gas pipes.
- It is essential that this unit is fixed to a wall with the fixings provided.
- Never allow children to climb or hang on drawers or shelves.

### CARE INFORMATION

- Never use scourers, abrasives or chemical cleaners.
- To clean wipe with a sponge and soapy water. Do not use solvent based cleaners or detergents as they can bleach or damage the product.

### GFW The Furniture Warehouse

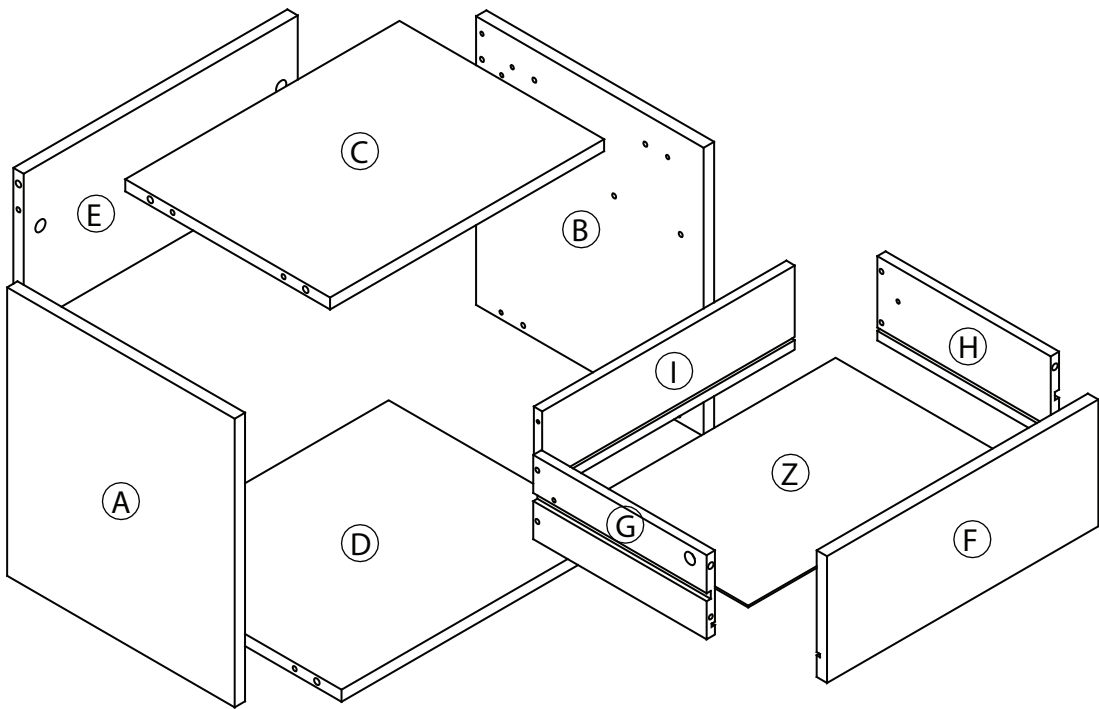
Waterside Distribution Centre, Waterside Business Park,  
Johnson Road, Eccleshill, Lancashire BB3 3RT.

Please check the pack contents before assembling the product. If any components are missing, please contact your retailer. The fittings pack contains small items that should be kept away from small children.

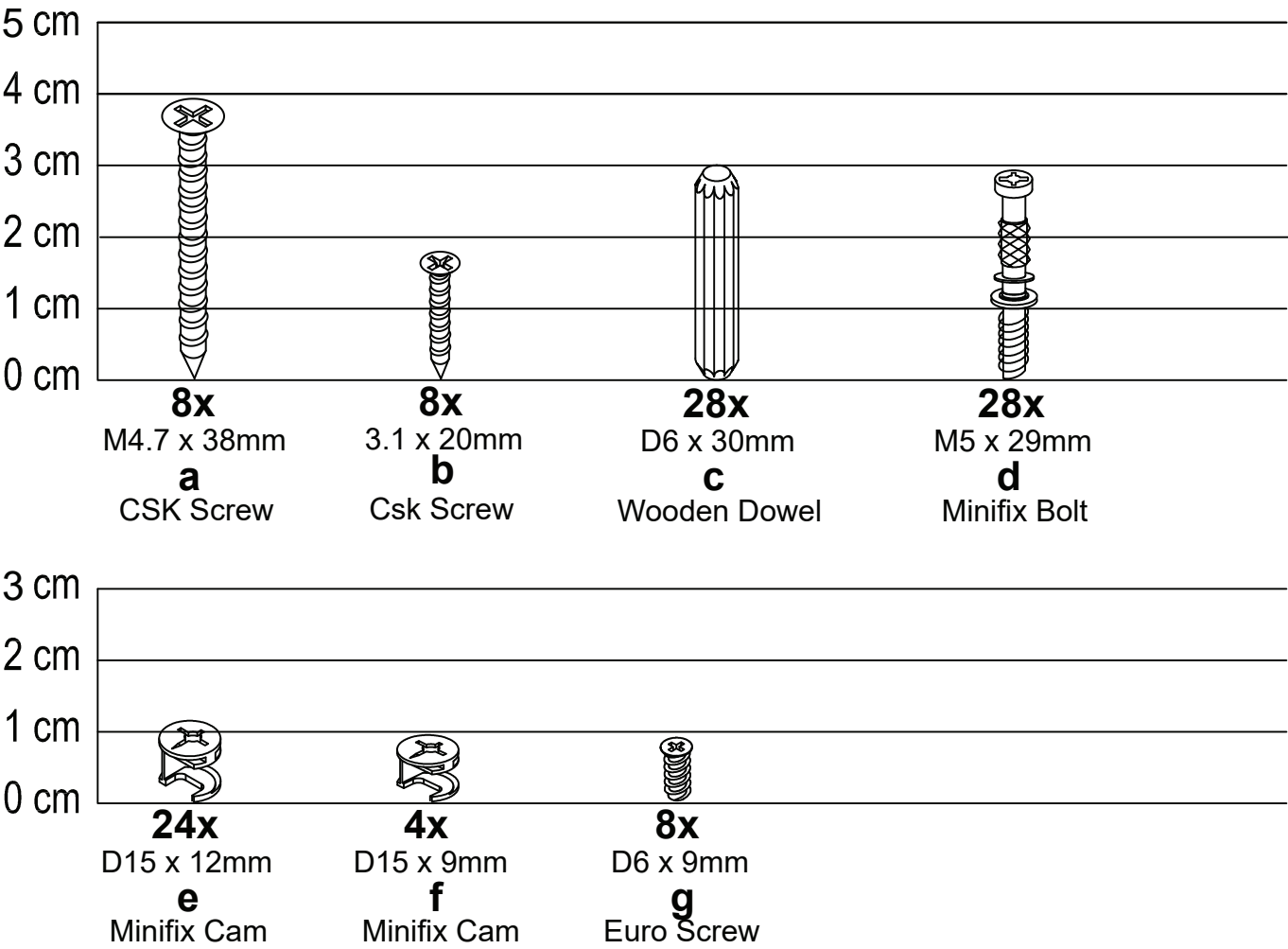
Parts

CODE	PART NAME	QTY
A	Side Panel (L) (15 x 328 x 360mm)	2
B	Side Panel (R) (15 x 328 x 360mm)	2
C	Top Panel (15 x 295 x 395mm)	2
D	Bottom Panel (15 x 327 x 395mm)	2
E	Support Panel (Back) (15 x 193 x 395mm)	2

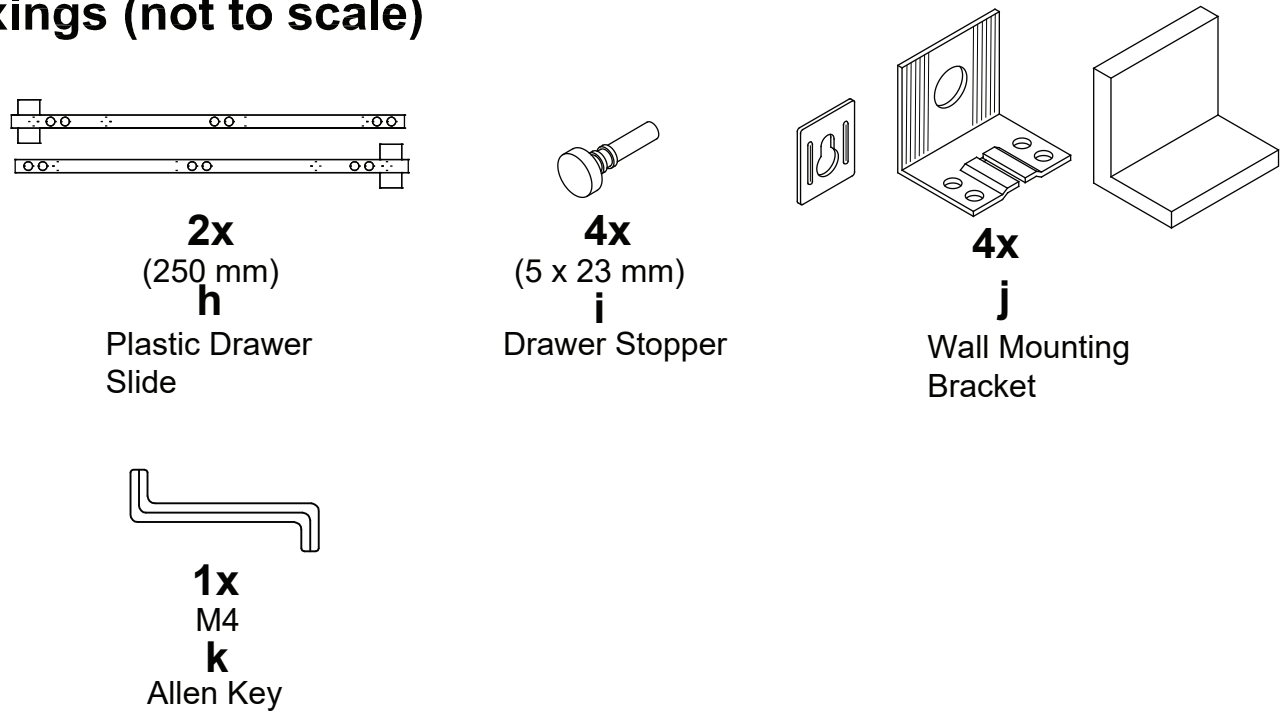
CODE	PART NAME	QTY
F	Drawer Front (15 x 158 x 391mm)	2
G	Drawer Side (L) (12 x 105 x 250mm)	2
H	Drawer Side (R) (12 x 105 x 250mm)	2
I	Drawer Back (12 x 105 x 364mm)	2
Z	Drawer Bottom (2.5 x 246 x 372mm)	2

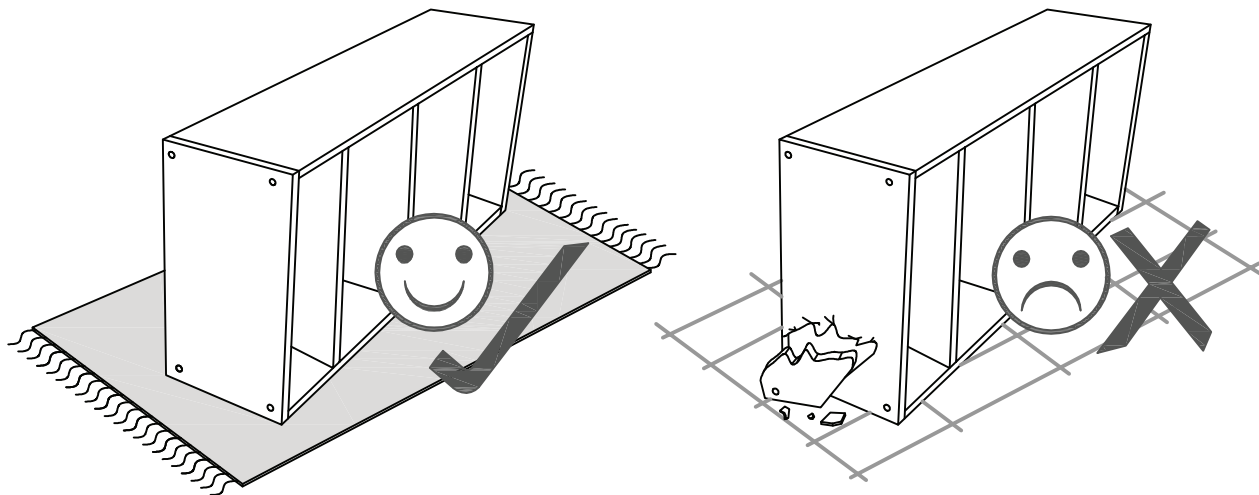


Fixings (to scale)



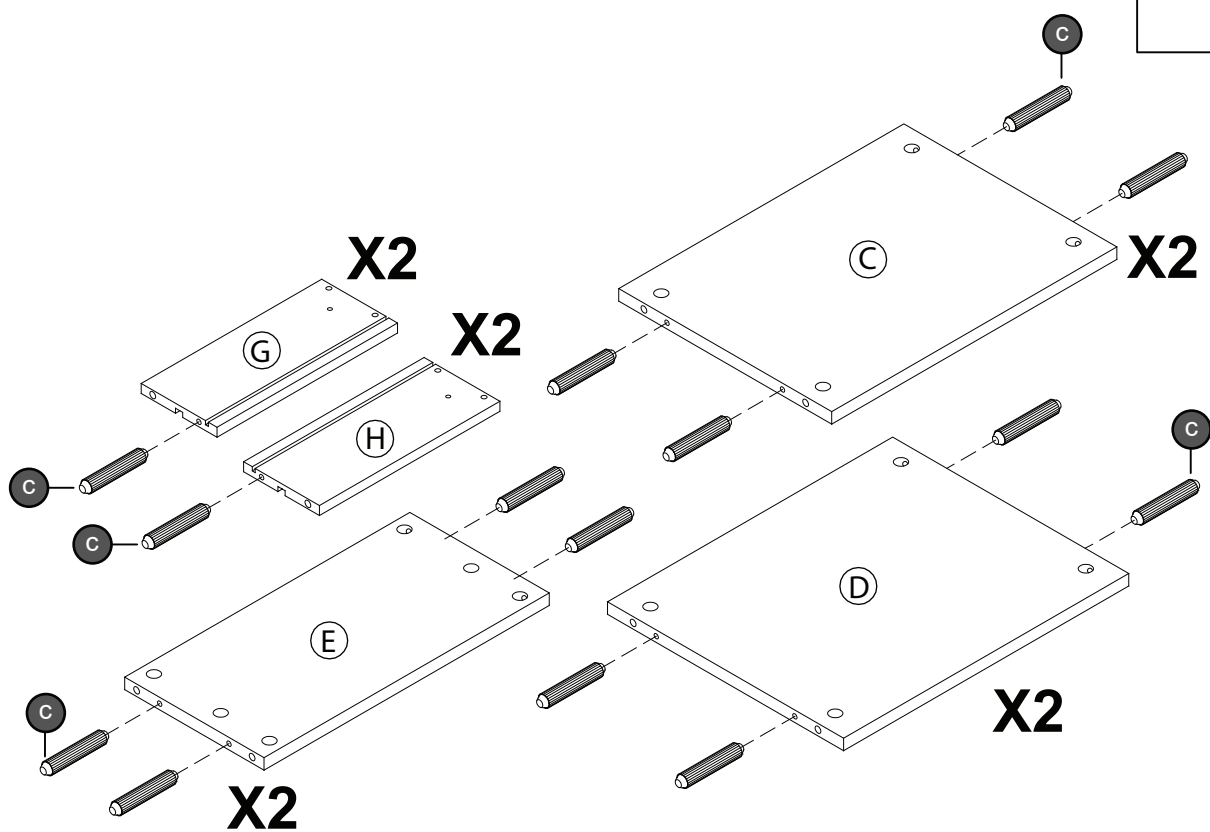
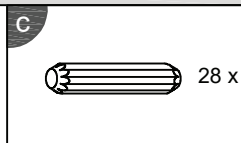
Fixings (not to scale)





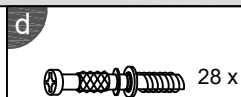
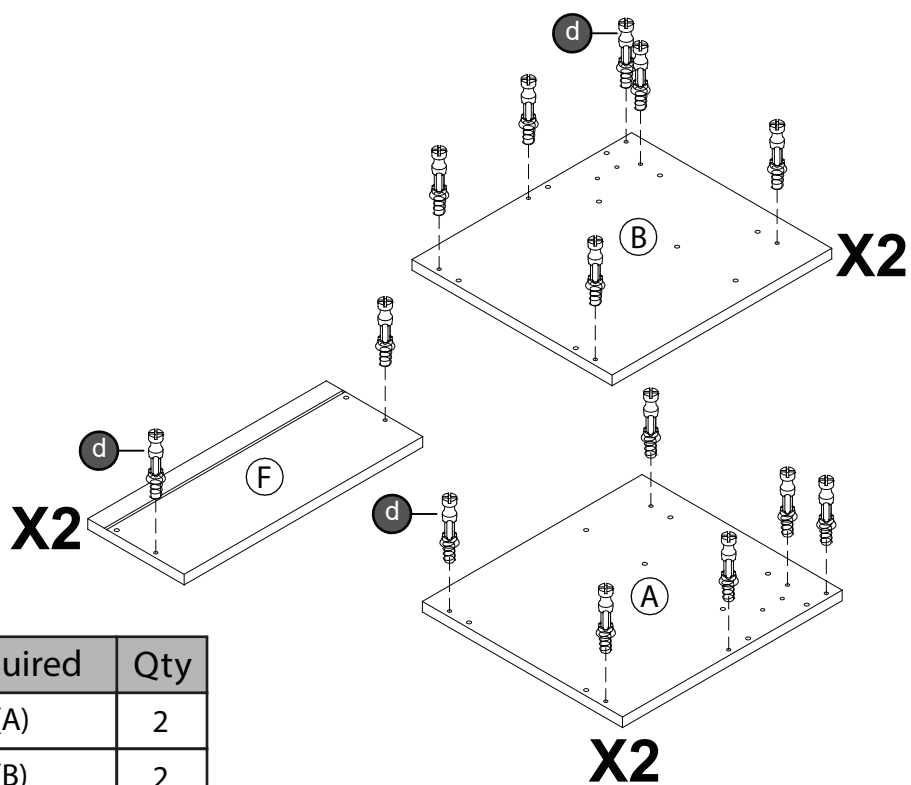
## Layout Parts on Soft Surface

### STEP 1



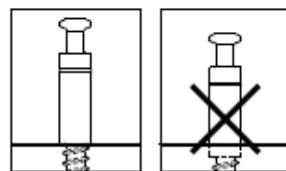
Parts Required	Qty
Panel (C)	2
Panel (D)	2
Panel (E)	2
Panel (G)	2
Panel (H)	2

## STEP 2

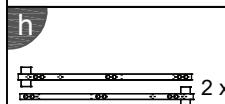
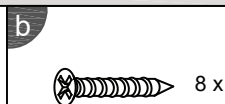
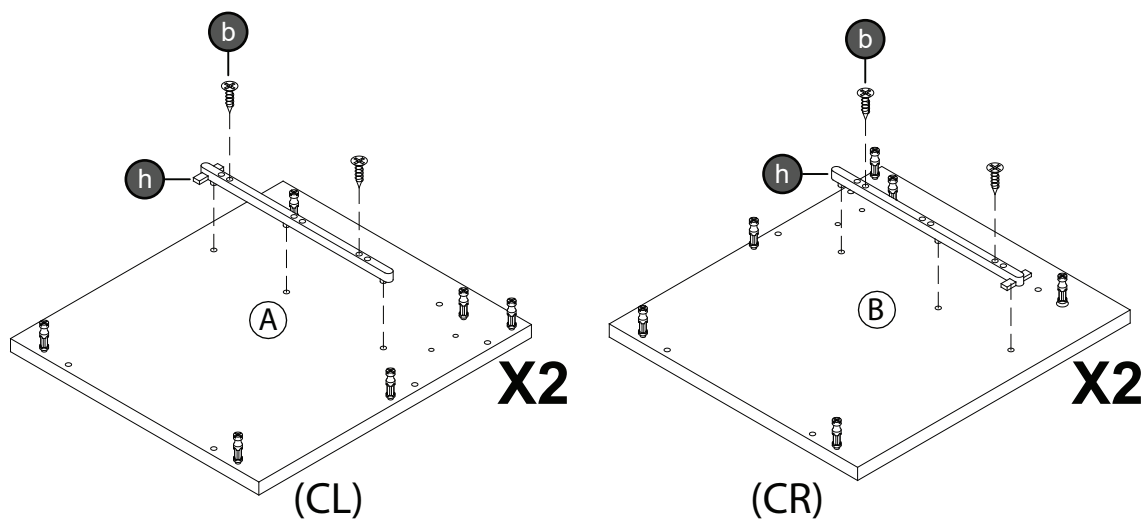


Parts Required	Qty
Panel (A)	2
Panel (B)	2
Panel (F)	2

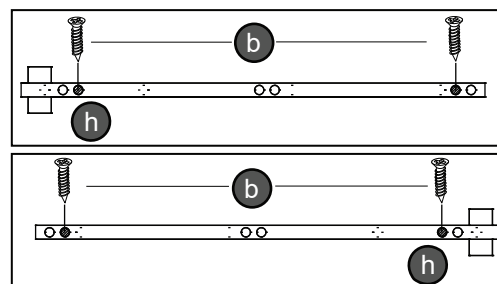
Don't screw too deep



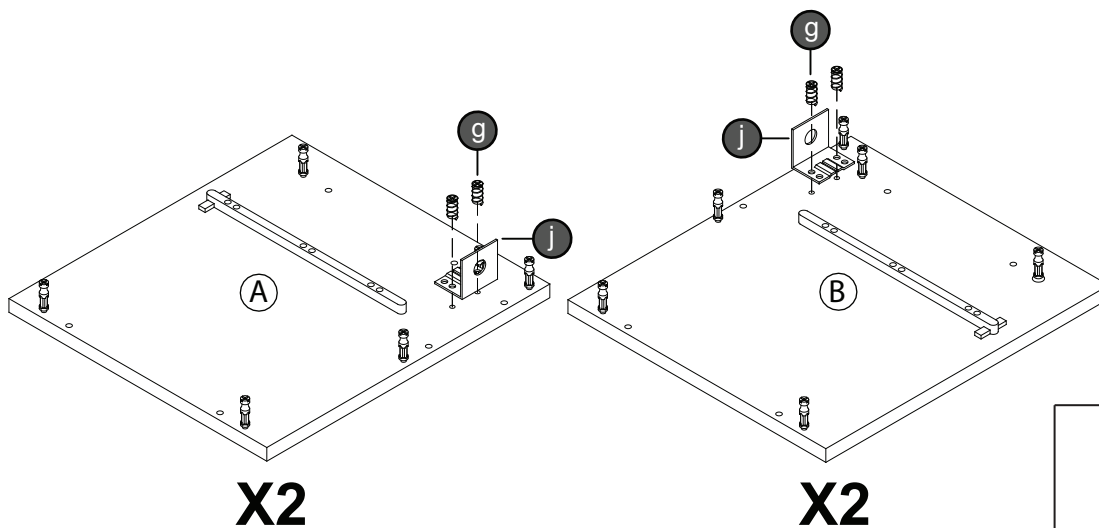
## STEP 3



Parts Required	Qty
Panel (A)	2
Panel (B)	2

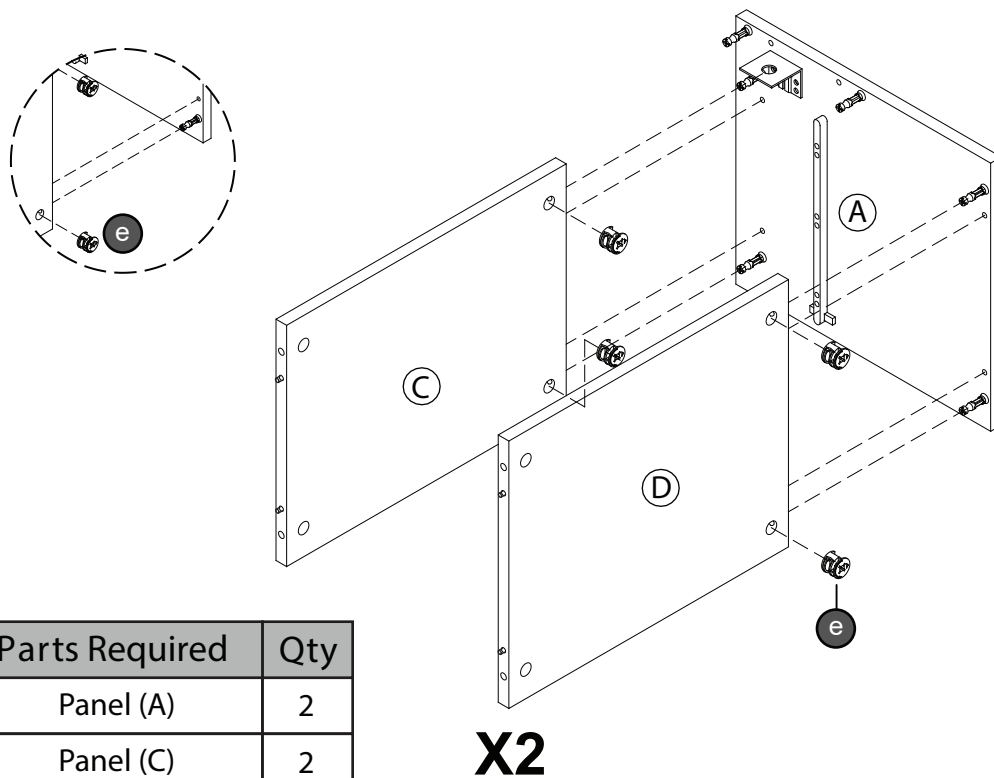


STEP 4



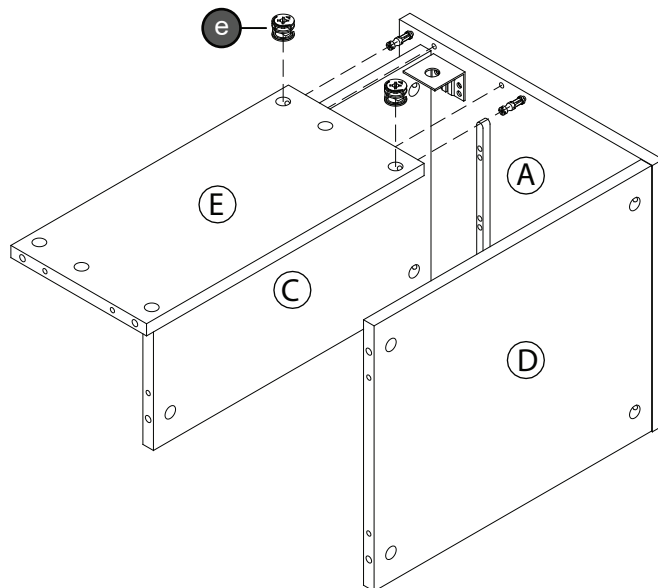
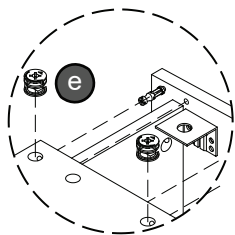
Parts Required	Qty
Panel (A)	2
Panel (B)	2

STEP 5

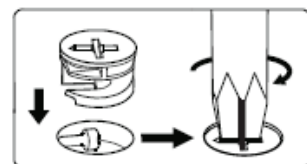
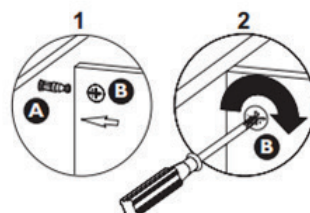
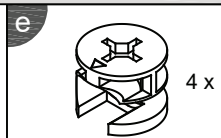


Parts Required	Qty
Panel (A)	2
Panel (C)	2
Panel (D)	2

STEP 6

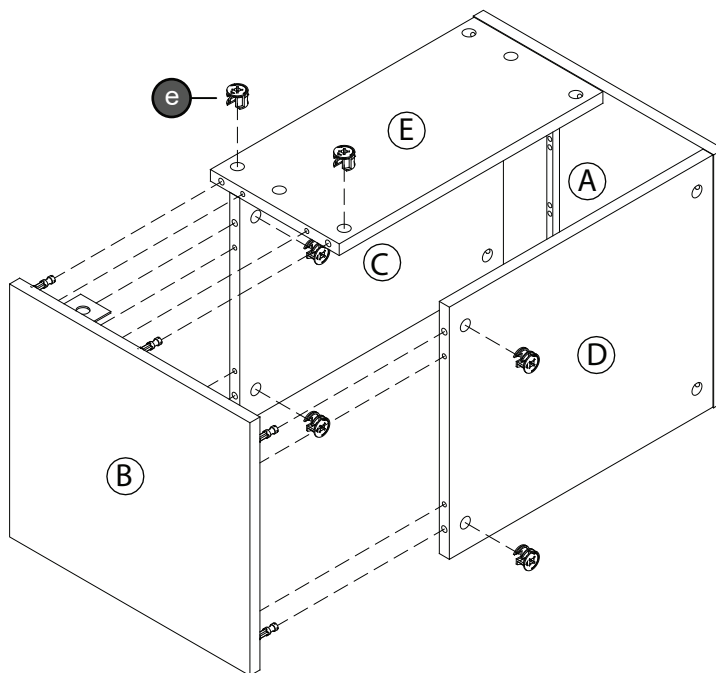
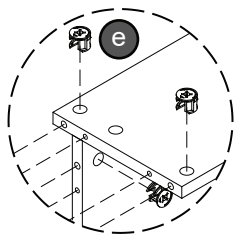


X2

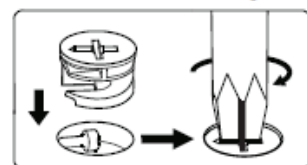
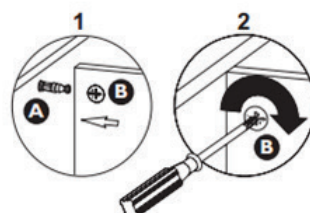
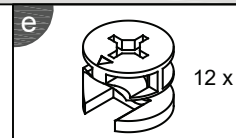


Parts Required	Qt
Panel (E)	2

STEP 7



X2



Parts Required	Qt
Panel (B)	2





### Drill the holes for the Bedside Brackets

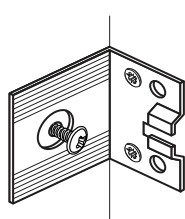
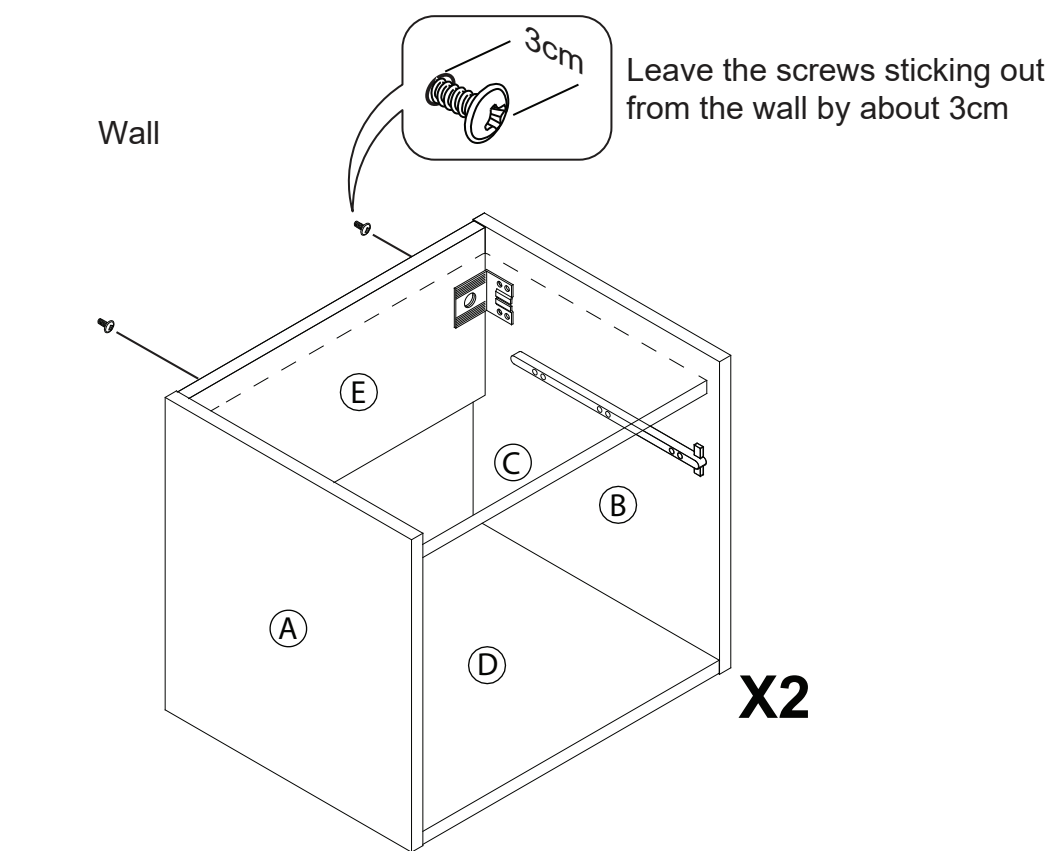
Drill into the mark-holes in the wall using an appropriate drill-bit.

The screws and plugs are not supplied as they need to be the correct type to suit your wall.

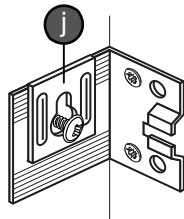
**Note: Take care when drilling the wall that you do not drill into any pipes, wires etc.**

**If in doubt, consult an expert.**

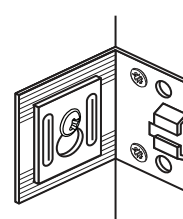
*See the next section for a guide to wall mounting and fixings*



Carefully place the Bedside unit onto the wall by positioning the Brackets over the Screws



Fit the key-hole part of the Bracket over the screw, making sure that its protruding parts at the top and bottom are against the grooves in the Bracket



Make sure the unit is level, then drop the key-hole part over the Screw and tighten it up

# A Guide to Wall Mounting & Fixings

## Important note:

If plastic wall plugs are supplied with your product:



- these are only suitable for use in masonry walls.

If you are in any doubt about the correct wall plugs for your wall, seek professional advice.

Failure of the product due to using incorrect fixings is the responsibility of the installer.



**Important:** When drilling into walls always check that there are no hidden wires or pipes etc.

Make sure that the screws and wall plugs being used are suitable for supporting your unit. Consult a qualified tradesperson if you are unsure.

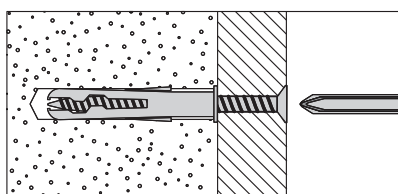
## Hints:

- 1: General rule: Always use a larger screw and wall plug if you are not sure.
- 2: Ensure you use the recommended drill bit to match the wall plug and hole size.
- 3: Ensure you drill the hole horizontally, do not force the drill or enlarge the hole.
- 4: Take extra care when drilling high walls, ceilings and ceramic tiles. Ensure wall plugs are inserted beyond the thickness of the ceramic tiles to avoid the tiles splitting or cracking.
- 5: Ensure wall plugs are well fitted and are a tight fit in the drilled hole.

## Types of walls

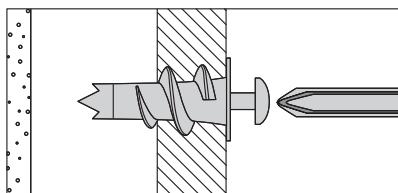
You can use one of the following types of wall plug if your walls are made of brick, breeze block, concrete, stone or wood.

### No.1 "General Purpose" wall plug



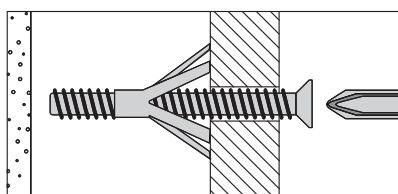
Generally aerated blocks should not be used to support heavy loads, use a specialist fitting in this case. For light loads, general purpose wall plugs can be used.

### No.2 "Plasterboard" wall plug



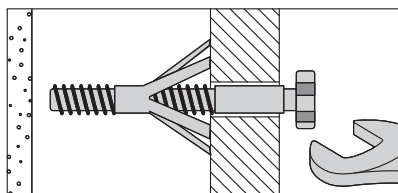
For use when attaching light loads on to plasterboard partitions.

### No.3 "Cavity Fixing" wall plug



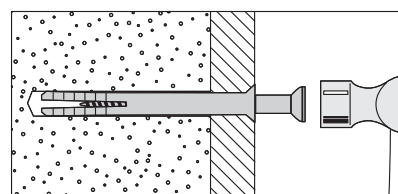
For use with plasterboard partitions or hollow wooden doors.

### No.4 "Cavity Fixing-Heavy Duty" wall plug



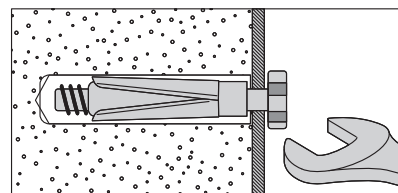
For use when fitting or supporting heavy loads such as shelving, wall cabinets and coat racks.

### No.5 "Hammer Fixing" wall plug



For use with walls stuck with plasterboard. The hammer fixing allows it to be fixed to the wall rather than the plasterboard. Always check the fixing is secure to the retaining wall.

### No.6 "Shield Anchor" wall plug Heavy loads



For use with heavier loads such as TV & HiFi speakers and satellite dishes etc.

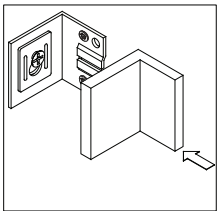


## Care & Maintenance

**Safety:** Always check the fitting and location to ensure your safety in and around the home.

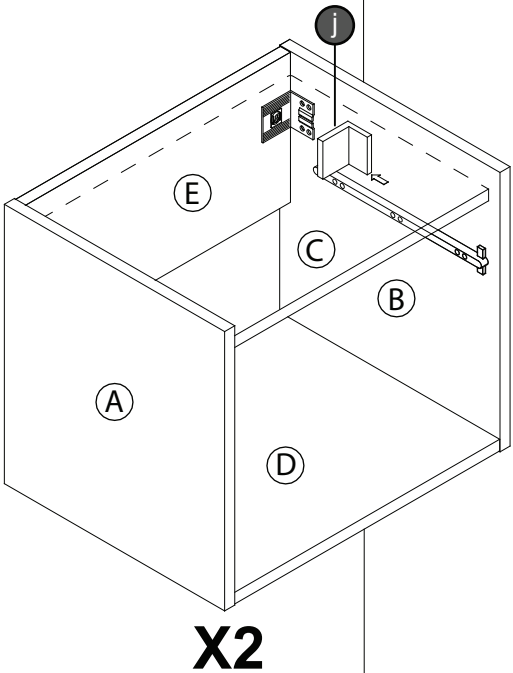
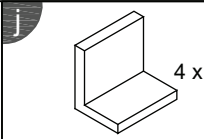
**Fitting:** From time to time check the fitting to ensure the wall plugs or screws do not become loose.

# STEP 9

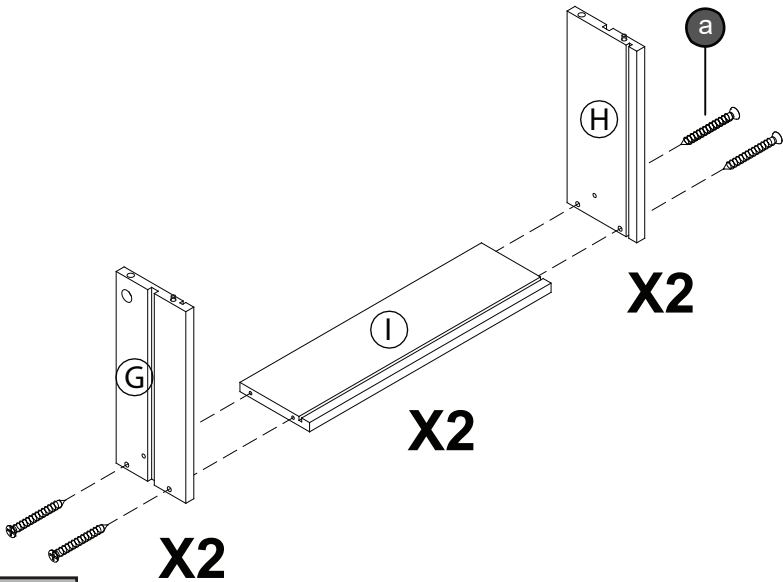
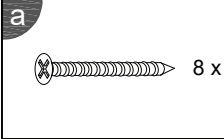


Slide the plastic cover over the bracket

Wall

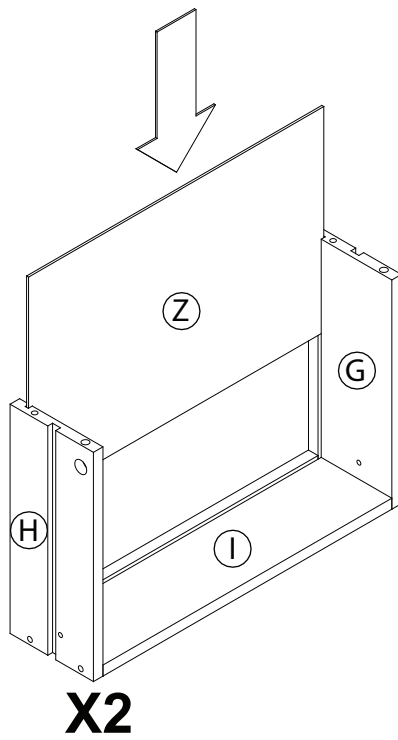


# STEP 10



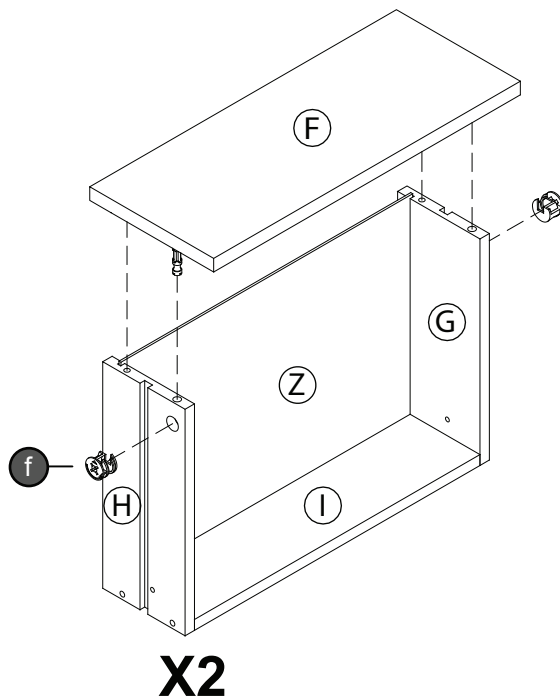
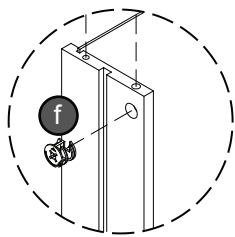
Parts Required	Qt
Panel (G)	2
Panel (H)	2
Panel (I)	2

STEP 11

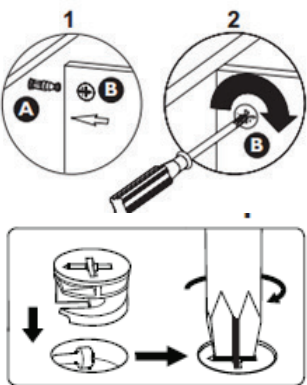


Parts Required	Qt
Panel (Z)	2

STEP 12

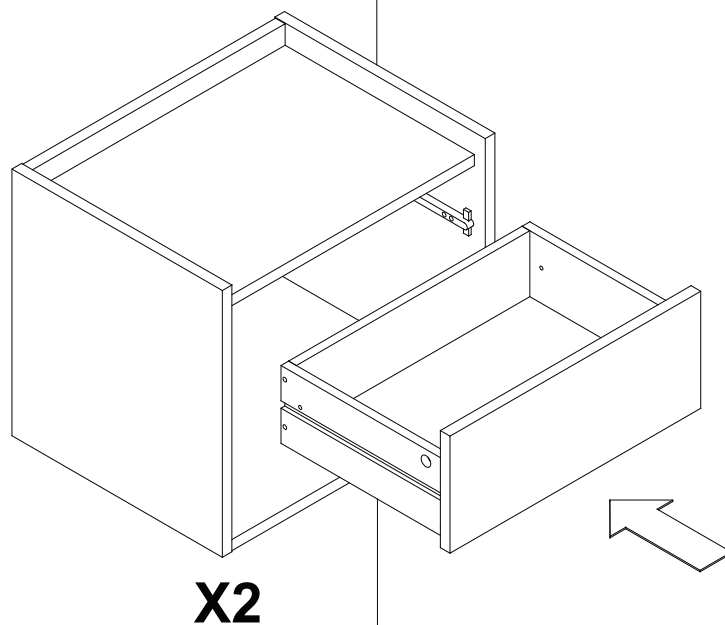


Parts Required	Qty
Panel (F)	2



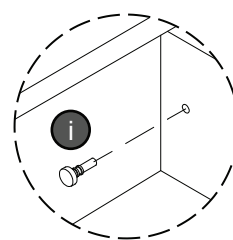
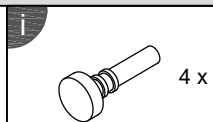
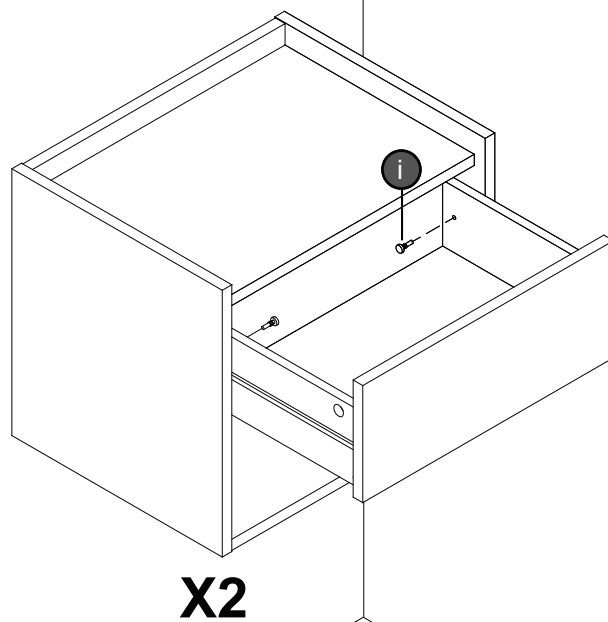
## STEP 13

Wall



## STEP 14

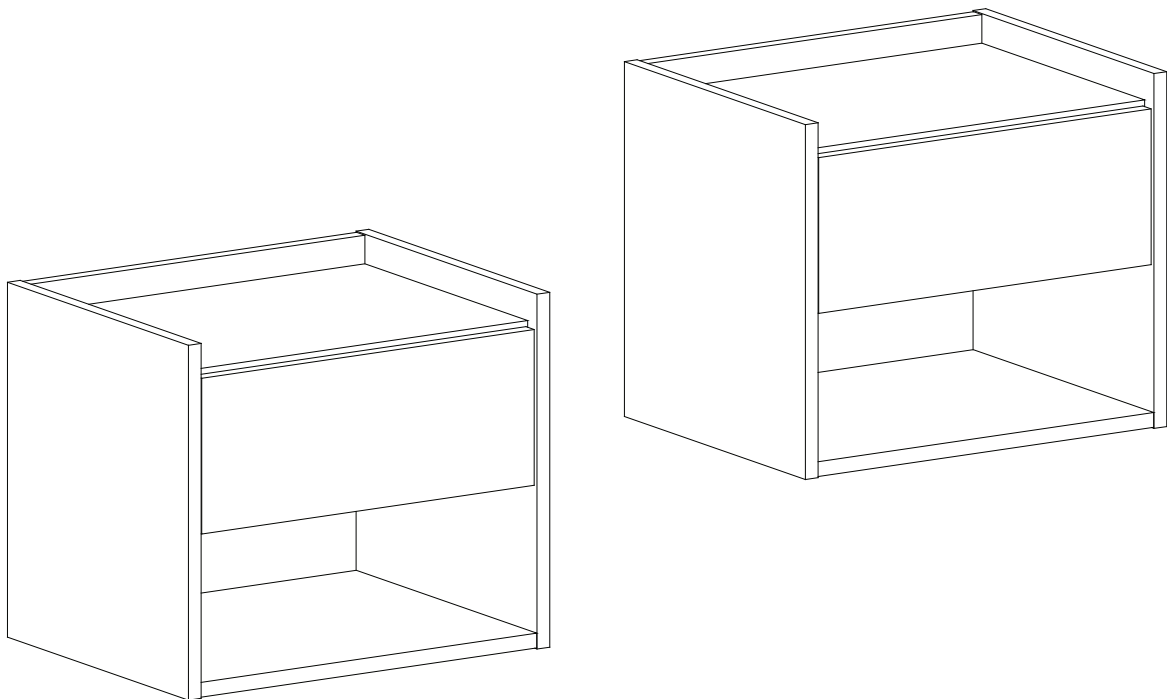
Wall



## Complete Assembly

Your **HARMONY WALL MOUNTED BEDSIDE TABLE** is now completely assembled

Periodically check to ensure that the components are in their proper position, free from damage. Also, make sure the connectors are tight and secure.



Keep instructions for future reference

