

3500263



Please read all instructions carefully before use and retain for future reference.



Protect your hands.



CAUTION Do not immerse in water.



ATTENTION This appliance has a thermal cut out switch. The thermal cut out will activate and shut down the appliance should the appliance overheat.

Unplug from the mains and or battery and allow to cool for 30 minutes before re-use.



Wear a dust mask.



Do not use chemicals or detergents that are toxic, flammable, or high in acidic/alkaline base with this Pressure Washer.

Always use a detergent that has been specifically manufactured for pressure washer use.

Always exercise extreme caution when using the Pressure Washer not to direct the water jet at items other than the surface intended.

The user is responsible for using this Pressure Washer safely and as instructed in this manual. DOMU Brands Ltd cannot be held responsible for damage to property resulting from misuse of the Pressure Washer, or the use of detergents not suitable for the intended task.



Protect your eyes.



Protect your ears.



WARNING – RISK OF INJECTION! Unit will start spraying when trigger is squeezed. When turning the unit off after use, high pressure still exists inside the hose and unit. Point the lance in a safe direction and discharge the excess pressure. NEVER direct the high pressure water stream at people or animals.

To reduce the risk of electric shock or injury, do not expose to wet conditions.

Risk of explosion. Do not spray with flammable liquids.



Please read all instructions carefully before use and retain for future reference.

INTENDED USE Only operate the power tool/machine for its intended purpose and within the parameters Specified in this manual.

This power tool/machine is for domestic use only.

This power tool/machine is not intended for use by persons with reduced physical, sensory or mental capabilities, or lack of experience and knowledge, unless supervised or given appropriate instruction concerning the product's use by a person responsible for their safety.

GENERAL PRECAUTION Do not allow to be used as a toy. Children should be supervised to ensure they do not play with the power tool/machine.

If the power tool/machine is not functioning properly, has been dropped, damaged, left outdoors, or immersed in liquid, do not use, contact DOMU Brands Customer Services.

Do not use the power tool/machine if any parts appear to be faulty, missing or damaged.

Ensure all parts are securely attached before use.

RISK OF PERSONAL INJURY Avoid body contact with earthed or grounded surfaces such as pipes, radiators, ranges and refrigerators. There is an increased risk of electric shock if your body is earthed or grounded.

Prevent unintentional starting. Ensure the switch is in the off position before connecting to the power source and/or battery pack, picking up or carrying the tool. Carrying power tools with your finger on the switch, or energising power tools that are switched on, invites accidents.

Do not operate power tools in explosive atmospheres such as in the presence of flammable liquids, gases or dust. Power tools create sparks which may ignite the dust or fumes.

Always wear eye protection. Any power tool can throw foreign objects into your eyes and cause permanent eye damage. Always wear safety goggles (not glasses) that comply with ANSI safety standard Z87.1. Every day glasses have only impact resistant lenses.

Do not expose power tools to rain or wet conditions. Water entering the power tools will increase the risk of electric shock.

Stay alert, watch what you are doing and use common sense when operating a power tool/machine. Do not use a power tool/machine while you are tired or under the influence of drugs, alcohol or medication. A moment of inattention while operating power tool/machine may result in serious personal injury.

Use personal protective equipment. Always wear eye protection. Protective equipment such as dust mask, non-skid safety shoes, hard hat, or hearing protection used for appropriate conditions will reduce personal injuries.

Prevent unintentional starting. Ensure the switch is in the off-position before connecting to power source and/or battery pack, picking up or carrying the tool.

Carrying power tool/machine with your finger on the switch or energizing power tool/machine that have the switch on invites accidents.

Remove any adjusting key or spanner before turning the power tool/machine on. A spanner or a key left attached to a rotating part of the power tool/machine may result in personal injury.

Do not overreach. Keep proper footing and balance at all times. This enables better control of the power tool/

machine in unexpected situations.

Dress appropriately. Do not wear loose clothing or jewellery.

Keep your hair, clothing and gloves away from moving parts. Loose clothes, jewellery or long hair can be caught in moving parts.

If devices are provided for the connection of dust extraction and collection facilities, ensure these are connected and properly used. Use of dust collection can reduce dust-related hazards.

WORK AREA SAFETY Keep work area clean and well lit. Cluttered or dark areas invite accidents.

Do not operate power tool/machine in explosive atmospheres, such as in the presence of flammable liquids, gases or dust.

Power tool/machine create sparks which may ignite the dust or fumes.

Keep children and bystanders away while operating a power tool/machine. Distractions can cause you to lose control.

GENERAL POWER TOOL USE AND CARE Do not force the power tool/machine. Use the correct power tool/machine for your application. The correct power tool/machine will do the job better and safer at the rate for which it was designed.

Do not use the power tool/machine if the switch does not turn it on and off. Any power tool/machine that cannot be controlled with the switch is dangerous and must be repaired.

Disconnect the plug from the power source and/or the battery pack from the power tool/machine before making any adjustments, changing accessories, or storing power tool/machine tools. Such preventive safety measures reduce the risk of starting the power tool/machine accidentally.

Store idle power tool/machine out of the reach of children and do not allow persons unfamiliar with the power tool/machine or these instructions to operate the power tool/machine.

Power tool/machines are dangerous in the hands of untrained users.

Maintain power tool/machines. Check for misalignment or binding of moving parts, breakage of parts and any other condition that may affect the power tool/machines operation. If damaged, have the power tool/machines repaired before use. Many accidents are caused by poorly maintained power tool/machines.

Keep cutting tools sharp and clean.

Properly maintained cutting tools with sharp cutting edges are less likely to bind and are easier to control.

Use the power tool/machine accessories and tool bits in accordance with these instructions, take into account the working conditions and the work to be performed.

Use of the power tool/machine for operations different from those intended could result in a hazardous situation.

CLEANING & MAINTENANCE Never soak or immerse electrical components and or a component that has a plug attached.

Disconnect the plug from the power source before making any adjustments, changing accessories, or storing. Such preventive safety measures reduce the risk of starting the power tool accidentally.

Ensure the motor has fully stopped before cleaning, clearing a blockage, checking, or carrying out any

maintenance on the tool.

Maintain your power tool. Check for misalignment or binding of moving parts, breakage of parts and any other condition that may affect the power tool's operation. If damaged, have the power tool repaired by a qualified repair person before use. Many accidents are caused by poorly maintained power tools.

Keep cutting tools sharp and clean. Properly maintained cutting tools with sharp cutting edges are less likely to bind and are easier to control.

Regularly check external nuts and fixings to ensure vibration caused by normal use has not balance to loosen them.

Store idle power tools out of reach of children and do not allow persons unfamiliar with the power tool or these instructions to operate the Breaker.

Locate the power tool out of reach of children, in a dry, locked unit.

Make sure that the cord is located so that it will not be stepped on, tripped over, or otherwise subjected to damage or stress.

Remove the plug from the mains socket / battery (where applicable) before carrying out any adjustment or maintenance.

Always store the power tool/machine in a dry place.

If the power cord is damaged, it must be replaced by a qualified service technician.

Keep the ventilation slots and motor housing as free of dirt and dust as possible (where applicable).

Clean the power tool/machine by rubbing it with a clean cloth and blow it clean using low-pressure compressed air is recommended.

Ensure you have all the pieces listed. If you are missing any components, contact our customer services department at

support@domu.co.uk **DO NOT** proceed with assembly if any components are missing.

CONNECTING THE PRESSURE WASHER In order to avoid a hazard due to inadvertent resetting of the thermal cut-out, this machine must not be supplied through an external switching device such as a timer, or connected to a circuit that is regularly switched on and off by the utility.

Connect to the non-potable water supply only. The Pressure Washer is not intended to be connected to the potable water mains. If necessary, please use only inlet hose-set approved by IEC 61770. If connecting this Pressure Washer to potable water mains, a back-flow preventer must be installed in the water pipe to prevent dirty water flowing back into the drinking water system.

This Pressure Washer is not designed to pump hot water. Do not connect to a hot water supply as this will significantly reduce the life of the pump.

Do not use with damaged cable or plug. If damaged it must be replaced by a qualified engineer or authorised service agent in order to avoid a hazard.

The electrical supply connection shall be made by a qualified person and comply with IEC 60364-1. The electric supply to this Pressure Washer should include either a Residual Current Device (RCD) that will interrupt the supply if the leakage current to earth exceeds 30 mA for 30ms, or a device that will prove the earth circuit.

The use of an extension cord is not recommended. If unavoidable, use only extension cords intended for outdoor use. These are identified by the mark "Acceptable for use with outdoor pressure washers;

store indoors while not in use". Use only extension cords with an electrical rating equal to or greater than the rating of the Pressure Washer.

Inadequate extension cords can be dangerous. If the use of an extension cord is unavoidable, it must be suitable for outdoor use, and the connection must be kept dry and off the ground. It is recommended that this is accomplished by means of a cord reel which keeps the socket at least 60mm above the ground. The plug and socket must be of watertight construction.

Do not use damaged extension cords. Examine the extension cord before use and replace if damaged. Do not abuse the extension cord. Do not pull on the cord to disconnect. Keep the cord away from heat and sharp edges.

Always disconnect the cord from the receptacle before disconnecting the Pressure Washer from the extension cord.

The Pressure Washer shall be disconnected from its power source by removing the plug from the socket outlet during cleaning or maintenance and when replacing the machine to another function.

Warning: Never use products with bleach or chlorine or any other corrosive materials, including liquids containing solvents (I.E Gas, Oils ETC) Tri-Sodium Phosphate products, Ammonia or Acid base cleaners.

These Chemicals will harm the unit and cause damage to the surface being cleaned. Always read the label.

SUITABLE OPERATING CONDITIONS Operate only in daylight or good artificial light.

Do not operate whilst tired or under the influence of medication, drugs or alcohol.

Keep your work area clean. Cluttered areas invite accidents.

Always check the area to be worked on for wire and other debris that could cause damage to the Pressure Washer and injury to the operator.

Never operate the Pressure Washer in a closed building, or in or near an explosive environment.

Never use the Pressure Washer in areas containing combustible dust, liquids or vapours.

Do not expose the Pressure Washer to rain or wet conditions. Water entering the Pressure Washer will increase the risk of electric shock.

Always wear substantial footwear and long trousers whilst operating the Pressure Washer.

Always wear safety glasses or goggles and protective clothing when operating or performing maintenance.

Keep children, pets and bystanders away whilst operating the Pressure Washer. Distractions can cause you to lose control.

SAFETY INFORMATION FOR USE Before use, know how to stop this Pressure Washer and bleed pressure quickly. Be acutely familiar with the controls.

Never operate the Pressure Washer without all components properly connected.

Do not operate the Pressure Washer with the Water Inlet screen removed. Keep the Water Inlet screen clear of debris and sediment.

Use only the nozzle supplied with this Pressure Washer.

High pressure hoses, fittings and couplings are important for the safety of the machine. Use only hoses, fittings and couplings recommended by the manufacturer.

Always turn the water supply on first before turning the Pressure Washer on. Running the pump dry can cause serious damage.

Make sure the inlet water pressure remains between 0.01MPa and 0.4MPa.

Always hold the Lance and Lance Trigger Handle firmly when starting and operating the Pressure Washer.

Be aware of the recoil caused by the water jet when the Pressure Washer is switched on.

Be aware of the danger of the kickback force when engaging the Lance Trigger Handle and grasp firmly.

Never place your hand or fingers over the spray tip whilst operating the Pressure Washer.

Keep hair, loose clothing, fingers, and all parts of body away from openings and moving parts.

Do not overreach. Keep proper footing and balance at all times.

Exercise extreme caution when reversing or pulling the Pressure Washer towards you.

Always be sure of your footing on slopes.

Walk, never run.

Keep clear of the nozzle. Never direct high pressure spray at yourself, or any other person or animal.

WARNING! Risk of injection or severe injury. Keep clear of the nozzle. Do not discharge streams at persons or animals. This Pressure Washer is to be used only by trained operators.

Do not direct the Pressure Washer at electrical apparatus or wiring.

Do not direct the Pressure Washer at flammable liquids.

The motor on this Pressure Washer does not run continuously. It runs only when the Lance Trigger Handle is squeezed. After following the start up procedures in this manual, turn the Pressure Washer on and squeeze the Lance Trigger Handle to activate.

Release the Lance Trigger Handle when changing from high to low pressure modes. Failure to do so could result in damage.

Never permanently engage the Lance Trigger Handle.

Always engage the Safety Lock on the Lance Trigger Handle, even when spraying is stopped for a moment.

This Pressure Washer should only be used with a suitable detergent. The use of other cleaning agents or chemicals may adversely affect the safety of the Pressure Washer.

Always follow detergent manufacturer's recommendations on the label for proper use of detergents. Always protect eyes, skin, and respiratory system from detergent use.

In the event of an accident involving detergents making contact with unsuitable surfaces, rinse with plenty of clean water.

Never allow the machine to run with the Lance Trigger Handle released (Safety Lock on) for more than one 1 minute at a time. Resulting heat build up will cause damage to the pump.

If a foreign body or other debris becomes accidentally entangled with the Pressure Washer, stop the machine immediately, disconnect from the mains, and do not use again until cleared.

If the Pressure Washer makes any unusual sounds, or starts to vibrate abnormally, stop the machine immediately, disconnect from the mains, and investigate the cause. Do not use again until the problem has been resolved (see 'Troubleshooting' for possible solutions).

Do not leave the Pressure Washer unattended whilst connected to the mains.

Never leave the Lance Trigger Handle assembly unattended whilst the Pressure Washer is running.

When moving the machine, always transport by the Carry Handle.

Do not operate continuously for periods longer than those marked on the product or indicated in the instructions.

Do not use for long periods without rest due to vibration to hands and arms.

Never disconnect the High Pressure Hose from the Pressure Washer whilst the system is pressurized. To de-pressurize the Pressure washer, turn both the power and water supply off, then squeeze the Lance Trigger Handle 2~3 times.

Use only as described in this manual and do not exceed maximum capacity. Use only DOMU Brands recommended attachments.

CLEANING & MAINTENANCE Ensure the ventilation slots are kept clean at all times. Blocked ventilation slots can cause overheating and damage to the motor.

Always remove the Lance from the Lance Trigger Handle before cleaning debris from the tip.

Modification of the Pressure Washer or tampering with its parts is not permissible.

For safety reasons, use only original spare parts supplied by, or approved by, the manufacturer.

Never attempt to alter factory settings.

Altering factory settings could damage the machine and will void the warranty.

Do not lubricate any parts, or carry out any maintenance or repair work other than that shown in this manual, or as advised by the DOMU Brands Customer Care Helpline.

STORAGE.

Never store the Pressure Washer outdoors or where it could freeze as this can seriously damage the pump.

TECHNICAL SPECIFICATION

Rated Voltage 220V - 240V ~

Rated Power 1600W

Rated Frequency 50/60Hz

Rated Pressure 90bar

Max Pressure 130bar

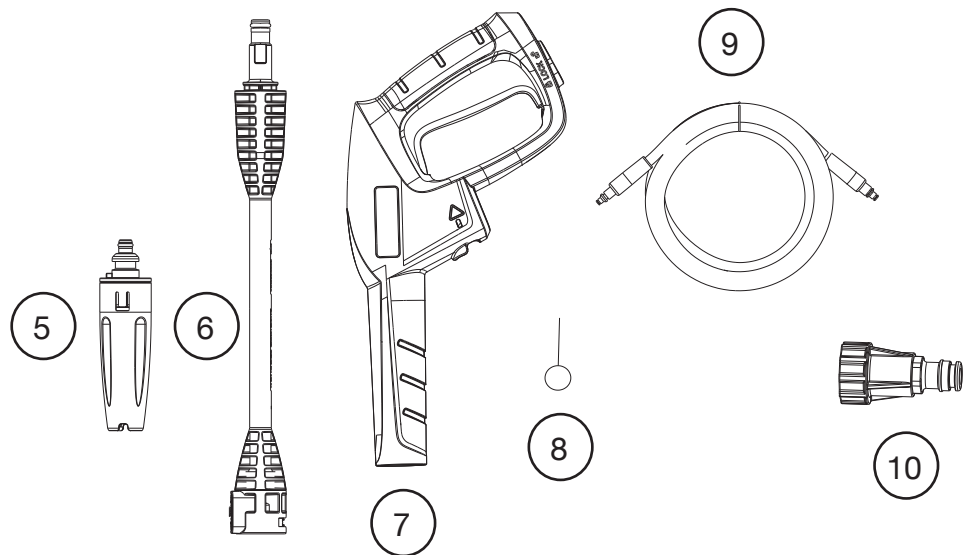
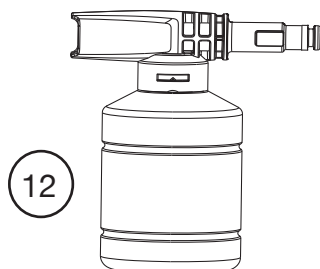
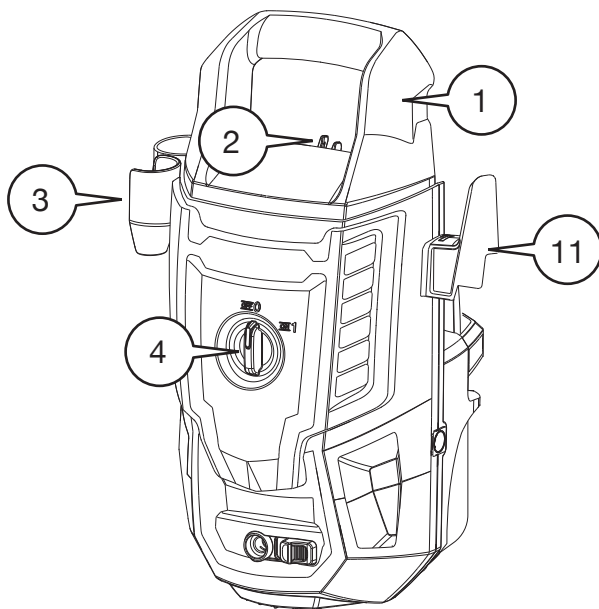
Rated Flow 5.5L/min

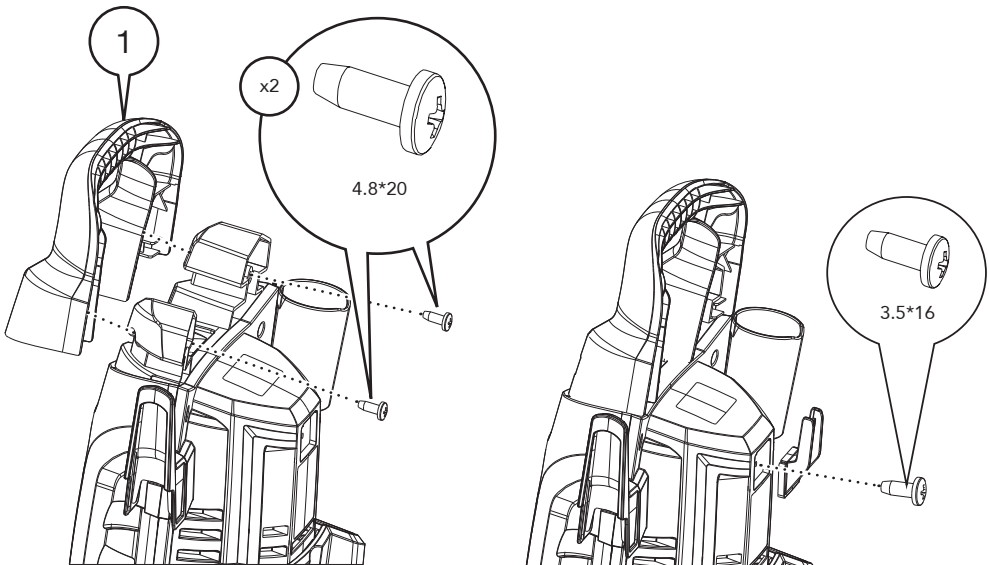
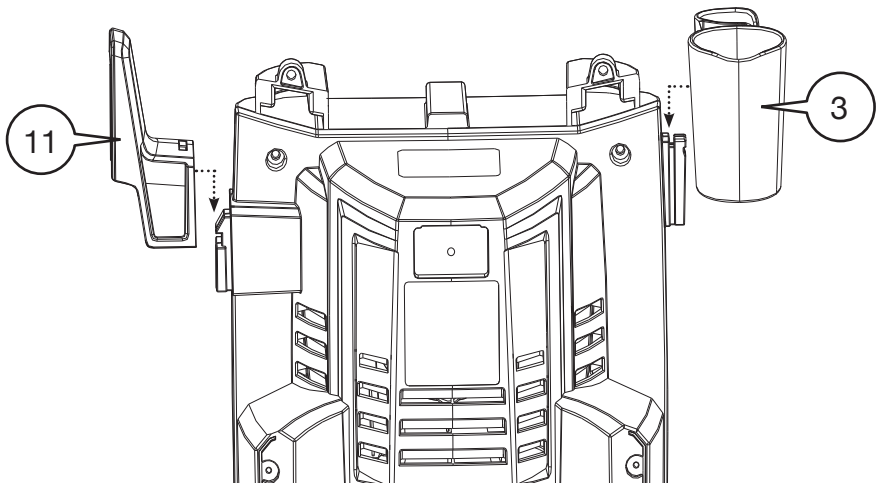
Max Pressure Water Supply 12bar

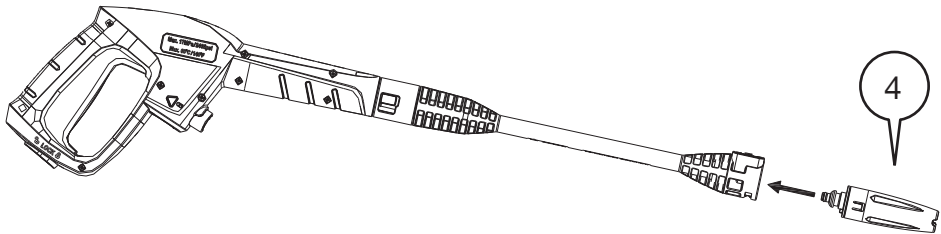
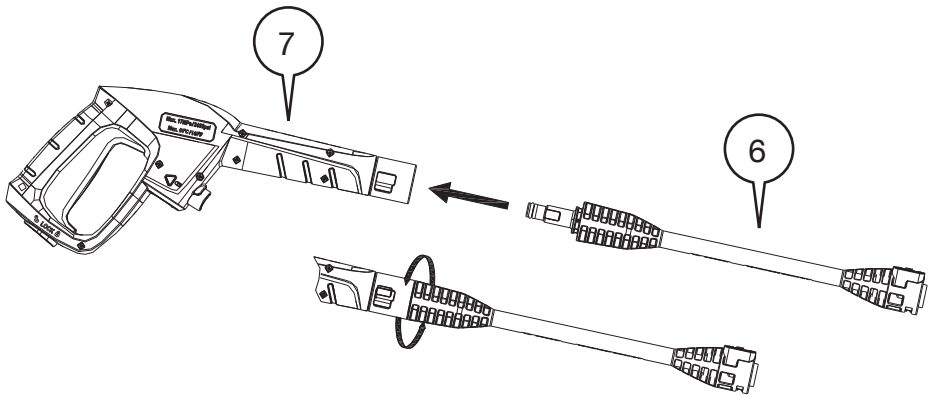
Max Water Temperature 50°C

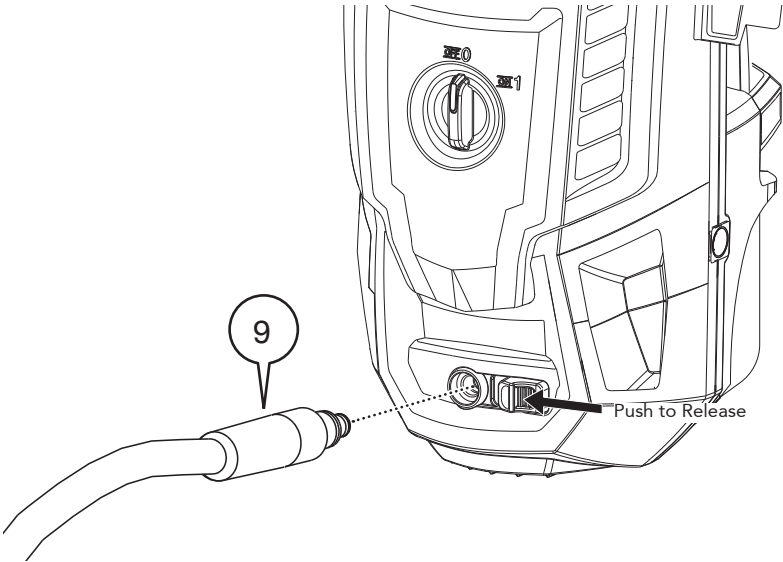
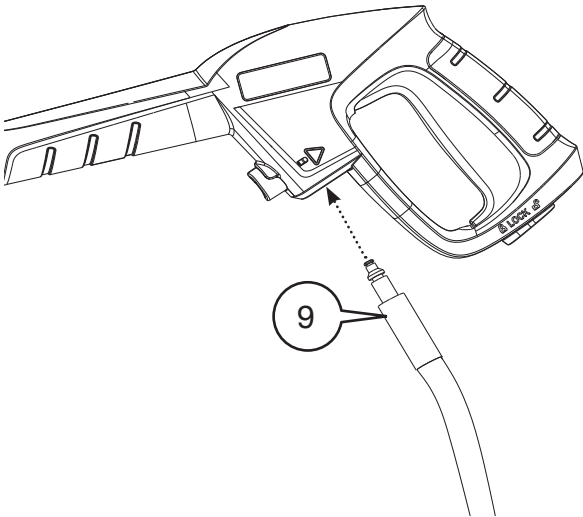
COMPONENTS

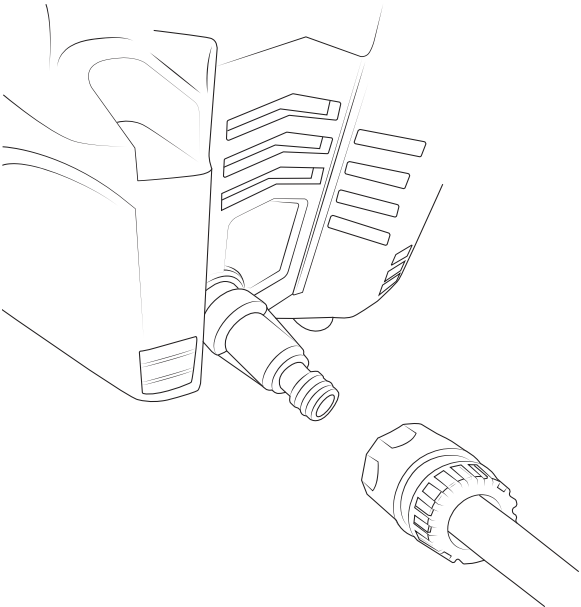
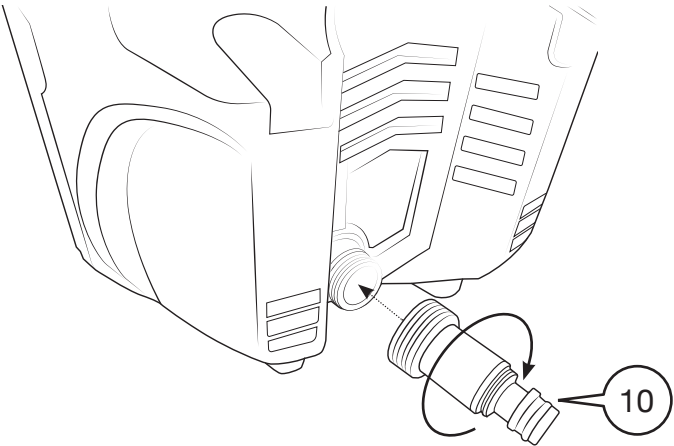
1. Short Handle
2. Accessory Holder
3. Lance Hook
4. Switch
5. Nozzle
6. Extension Wand
7. High Pressure Lance
8. Cleaning Pin
9. Pressure Hose
10. Water Inlet Connector
11. Power Cord Hook
12. Detergent Bottle



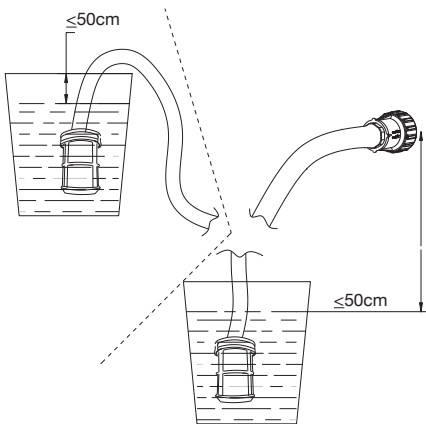








SAFETY LOCK OFF

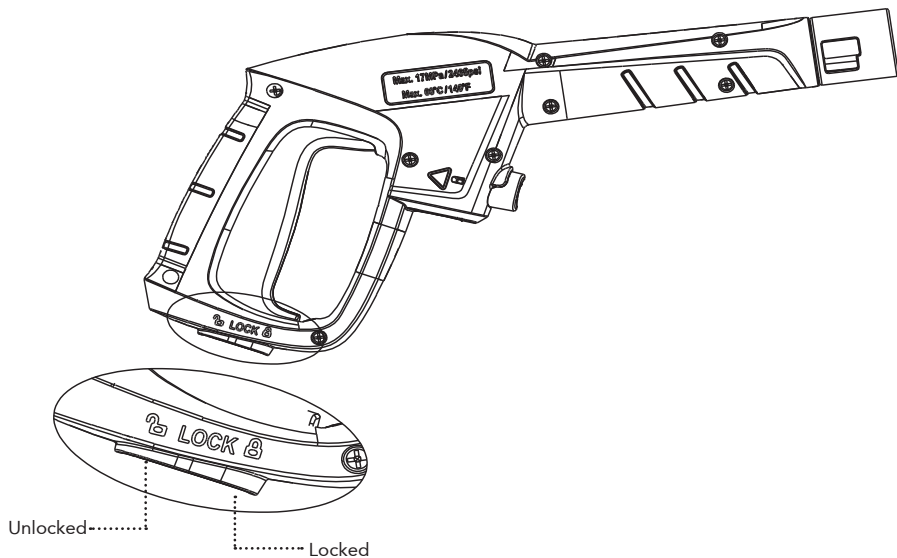


Ensure that the water source is not placed more than 50cm lower than the Pressure Washer inlet.

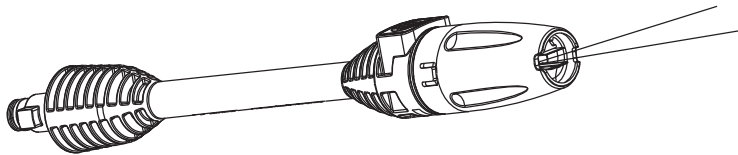
Ensure that the water source is not placed more than 50cm higher than the Pressure Washer inlet.

After starting the Pressure Washer, wait for water to flow out from the Lance, and then connect the nozzle to use.

SAFETY LOCK OFF

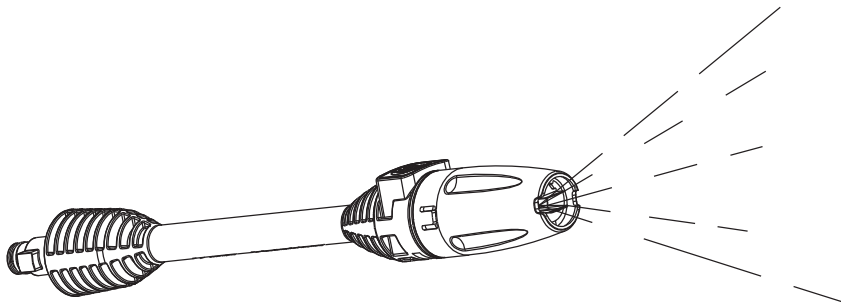


SPRAY NOZZLE ADJUSTMENT



The adjustable nozzle will allow you to use any variety of spray patterns from a full fan spray (**Fig 1**) to a direct stream spray (**Fig 2**).

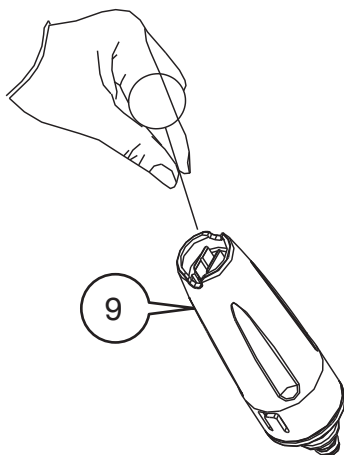
When using the pressure washer to clean wood decks, siding, vehicles etc., always start using the fan spray and begin spraying from a minimum 36" away to avoid damaging the surface of the material you are cleaning. Always begin by spraying in a testing area free and clear of people and objects.

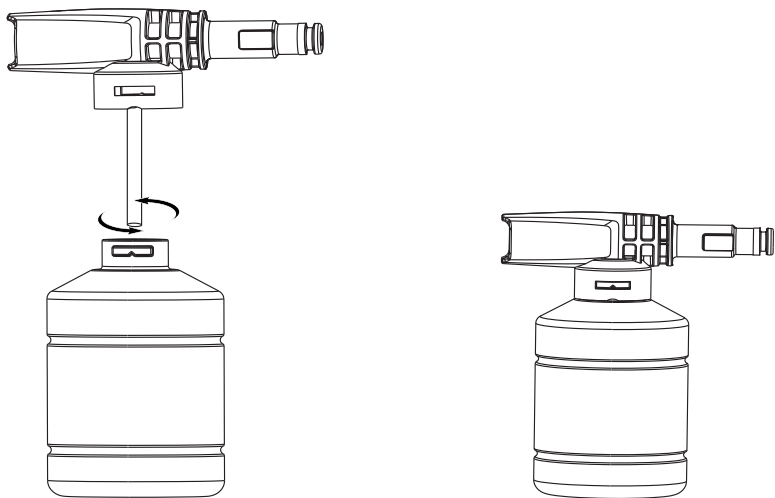
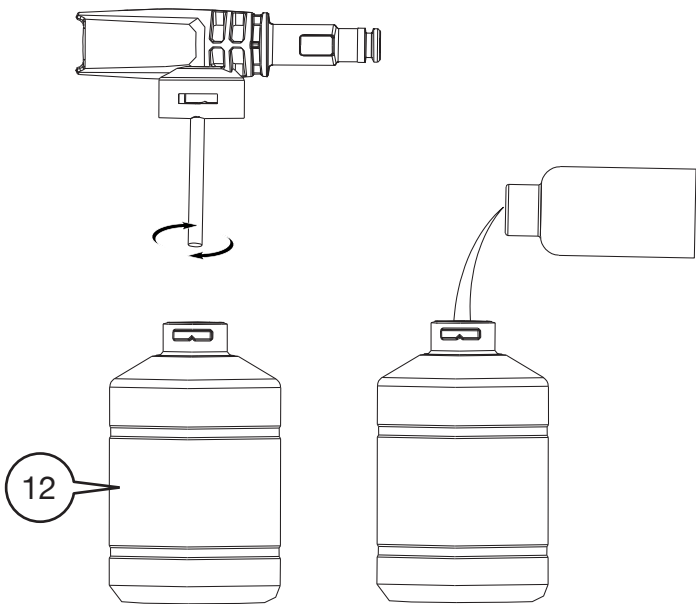


UNBLOCKING THE LANCE

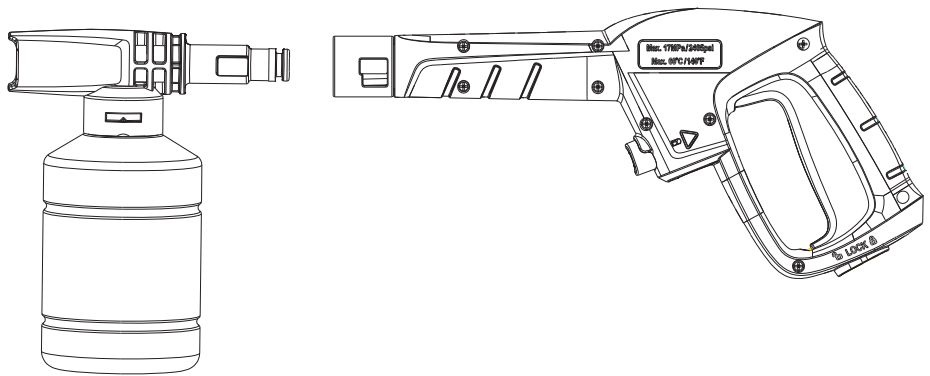
When the nozzle is clogged, it will cause the pump to build pressure and may cause unit to surge, you can clean the nozzle inserting needle into the tip to rid of the deposits.

For the adjustable nozzle, you can lubricate the nozzle collar (high pressure to low pressure) by using non-water soluble grease regularly.

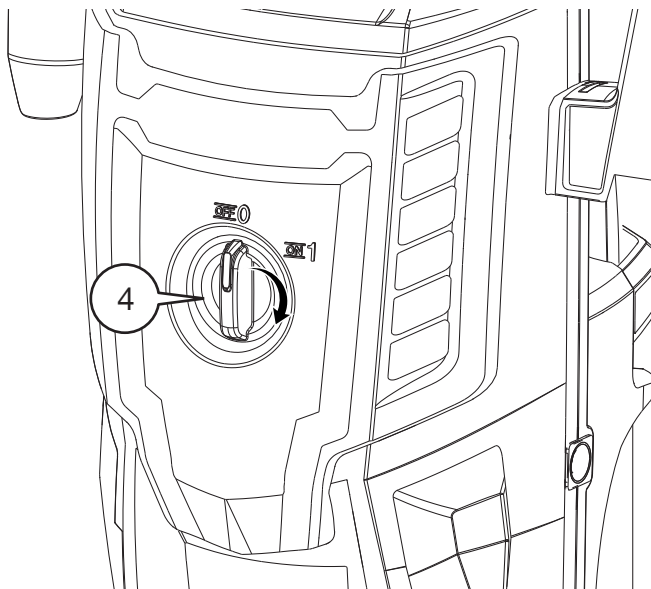




USING THE DETERGENT BOTTLE



SWITCHING OFF / ON



AUTO ON/OFF

The Pressure Washer is equipped with an automatic on/off switch.

The Pressure Washer will only run when the power switch is in the ON position and the trigger on the lance is squeezed.

When you release the trigger to stop spraying water through the lance, the motor on the Pressure Washer will automatically shut off.

Simply squeeze the trigger again to resume using the cleaner. To stop using the Pressure Washer, release the trigger and switch the unit to the OFF position.

The unit should be turned completely OFF while not in use or while unattended.

BLEEDING THE LANCE

It is very important to bleed the lance before using the Pressure Washer.

To bleed the lance, simply connect the garden hose to the Pressure Washer and squeeze the trigger BEFORE turning the electrical supply on.

This allows any air trapped inside the Pressure Washer and lance to be removed before using the unit.

Continue holding trigger for approximately one minute to allow any excess air out of the unit. Water will flow through the lance at low pressure during this procedure.

CLEAN UP AND STORAGE

SHUTTING DOWN THE CLEANER.

Turn the Pressure Washer off.

Turn off the water supply.

Before disconnecting high-pressure hose connection, point the lance in a safe direction and press the trigger to release the excess water.

Disconnect the high-Pressure Washer and lance.

Disconnect the garden hose from the Pressure Washer.

Remove excess water from the pump by tipping the unit on both sides to drain any remaining water from the inlet and outlet fittings.

Remove water intake filter and flush with water to remove dirt and debris, return filter once cleaned.

Empty and clean the detergent reservoir.

Wipe away any remaining water on any parts or components.

Ensure the safety lock is on.

Store the Pressure washer and accessories in an area with temperatures above (0°) 32°F

CLEAN UP AND STORAGE

SHUTTING DOWN THE CLEANER.

Turn the Pressure Washer off.

Turn off the water supply.

Before disconnecting high-pressure hose connection, point the lance in a safe direction and press the trigger to release the excess water.

Disconnect the high-Pressure Washer and lance.

Disconnect the garden hose from the Pressure Washer.

Remove excess water from the pump by tipping the unit on both sides to drain any remaining water from the inlet and outlet fittings.

CLEANING TIPS

WOOD AND VINYL DECKS

Rinse deck and surrounding area with fresh water. If using detergent, fill the detergent reservoir and apply to the area being cleaned at low pressure.

For optimal results, reduce your work area to smaller sections and clean each section one at a time. Allow the detergent to rest on the surface for a few minutes and then rinse at high pressure.

NOTE: Do not let the cleanser dry.

Always clean from left to right and top to bottom for best results. Rinse at high pressure using the fan spray keeping the tip of the spray nozzle at least 6-9 inches from the cleaning surface.

Maintain a further distance from the cleaning area when using a direct spray. Caution: For softer woods, increase the distance from the cleaning area.

CARS, BOATS, AND MOTORCYCLES

Rinse cleaning and surrounding area with fresh water. If using detergent, fill the detergent reservoir and apply to the area being cleaned at low pressure.

To achieve the best results, clean one side at a time. Allow the detergent to rest on the surface for a few minutes, but do not let the detergent dry.

Rinse at high pressure using the fan spray in a sweeping motion keeping the tip of the spray nozzle at least 8 inches from the cleaning surface.

Maintain a further distance from the cleaning area when using a direct spray. Wipe surface dry for a polished finish

BARBECUE GRILLS, POWER EQUIPMENT, AND GARDEN TOOLS

Rinse cleaning and surrounding area with fresh water. If using detergent, fill the detergent reservoir and apply to the area being cleaned at low pressure.

Allow the detergent to rest on the surface for a few minutes, but do not let the detergent dry.

Rinse at high pressure using the fan spray keeping the tip of the spray nozzle at least 1-3 inches from the cleaning surface. Maintain a further distance from the cleaning area when using a direct spray.



EN

DISPOSAL INFORMATION Please recycle where facilities exist. Check with your local authority for recycling advice.

CUSTOMER SERVICE If you are having difficulty using this product and require support, please contact **support@domu.co.uk**

WARRANTY To register your product and find out if you qualify for a free extended warranty please go to **www.vonhaus.com/warranty**. Please retain a proof of purchase receipt or statement as proof of the purchase date. The warranty only applies if the product is used solely in the manner indicated in the warnings page of this manual, and all other instructions have been followed accurately. Any abuse of the product or the manner in which it is used will invalidate the warranty. Returned goods will not be accepted unless re-packaged in its original packaging and accompanied by a relevant and completed returns form. This does not affect your statutory rights. No rights are given under this warranty to a person acquiring the appliance second-hand or for commercial or communal use.

COPYRIGHT All material in this instruction manual are copyrighted by DOMU Brands. Any unauthorised use may violate worldwide copyright, trademark, and other laws.

THANK YOU

Thank you for purchasing your product/appliance. Should you require further assistance with your purchase, you can contact us at

support@domu.co.uk

VonHaus is a registered trademark of DOMU Brands Ltd.

Made in China for DOMU Brands. Unit 30, Stakehill Industrial Estate, Middleton, Manchester M24 2RW.

Authorised Representative: Authorised Representative Service, 77 Camden Street Lower, Dublin, D02 XE80, Ireland.