

A photograph of an outdoor patio area. In the background, a house with a grey tiled roof is visible. A large, dense, artificial green plant wall covers the back wall of the patio. In the foreground, there is a modern outdoor sofa with dark grey cushions and several light-colored throw pillows. A wooden coffee table with a metal frame is in front of the sofa, holding a glass bottle, a glass, and a lantern. The patio floor is made of large, light-colored tiles.

ARTIFICIAL GREEN PLANT WALL

Installation Guide

TRUE 
PRODUCTS

Installation Guide

The simple way to a beautiful Artificial Green Wall

Welcome to our easy installation guide and congratulations on selecting your new artificial vertical garden wall panels. You are just a few steps away from having beautiful greenery in your home or business.

To make installation quicker and easier, we've put together a simple step-by-step guide to assist you. The best part is no special fixtures are required and you'll only need a few things found at your local hardware store.

The installation method will be slightly different depending on the site surface material. Please ensure you use the correct method to achieve the best outcome for long lasting green walls. Please note that you will likely require a tape measure, spirit level, pencil, sharp scissors, drill, rawl plugs, screws, and/or cable ties for installation.



Surface Types

Be sure to note the different surfaces the panels can attach to and what is recommended for each surface:

Plasterboard

Our preference is to screw directly into the wall using a 20mm screw with a good thread. There are pre-made holes on the back of the panels for you to use.

Timber

Simple timber screws only. Try using a screw with a large head for more coverage.

Concrete/Stone/Brick wall

Nylon nail plugs. Pre-drill a hole, place the panel on the wall and hammer the plug. Alternatively pre drill a hole, add a plastic plug and screw. If you are unable to drill the wall, try cladding the wall with plywood and use timber screws.

Wire fence

Use black cable ties to hold in place

Metal fence

Screw directly using metal screws. If you don't want exposed screws on the other side, you can pre-drill a few holes in the fence and use black cable ties to hold it all in place. If this also isn't an option we recommend making a timber frame for your panels to be mounted on to.

Installation Steps

What you will need



Tools

a step ladder
a cordless drill
a spirit level (optional)



People: 1-2



Installation Time:

Approx 5 - 10 mins per panel



Pre-installation advice:

We recommend painting your wall green or black, or using a backing material behind the green wall for the best finish! This isn't compulsory, but it will enhance the overall finished appearance of your green wall.

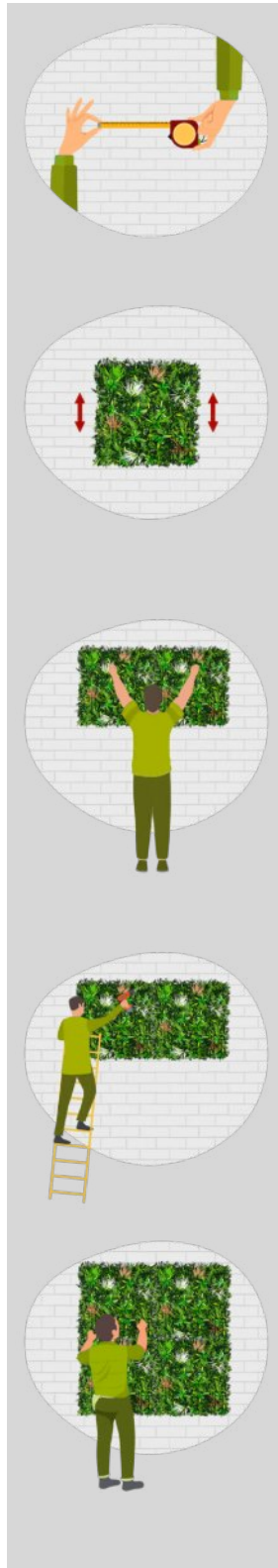


Backing:

Backing composition consists of a LDPE green flexible backing grid, which can be clipped together or unclipped for best fit or cut to size with sharp scissors.



Step 6 relax and enjoy!



Step 1

Unpack, measure and mark

Use a spirit level to mark guide lines across the top of your wall. These will be your fixing points. Start from the top corner and work your way across. Unpack and lay your green wall panels out in front of your wall.

Step 2

Secure the first green wall panel

Fix your first panel in place along the marked guide line using the fixing holes on the back of the panel. **Make sure any plants on the panels are facing upward.** Use 3 screws for the top of a 1m panel (2 screws for a 50cm panel) to ensure it is fixed completely flat to the wall.

Step 3

Secure the next green wall panel

Put your next panel in place and screw the top using your guideline to keep level. Lock the two panels together using the clips on the sides. Repeat this process until the top row is complete. Once the top row is locked and fixed in place move down to the next row.

Step 4

Position and clip the next rows

Place your next panel below the first panel on the top row. Clip the edges of both panels together to lock in place. Repeat until all panels are on the wall.

Step 5

Secure, screw, trim

Once all panels are clipped in place, screw the top and bottom of each panel to secure and fix flat against the wall. A 1m panel will have 9 screws (3 along the top, middle and bottom) and a 50cm panel will have 5 screws (2 for the top and bottom and one in the middle). Use scissors to trim any excess overhang at the bottom or sides. Finally, if necessary, manually position foliage to hide any panel joins that might be visible.